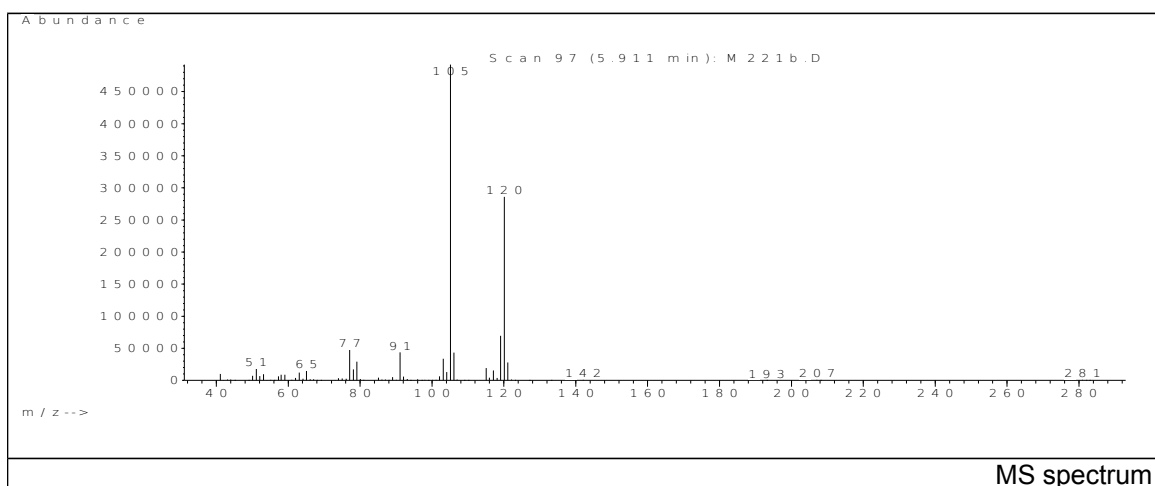
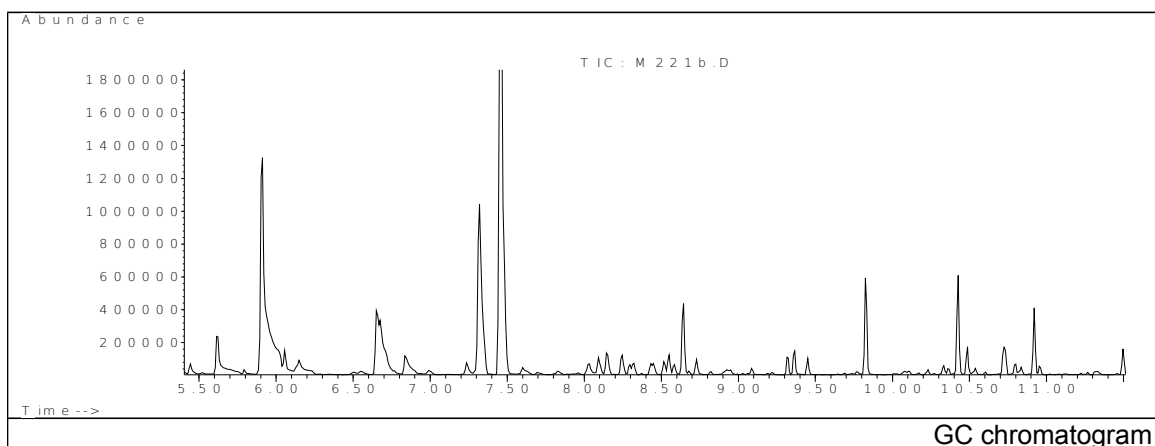


JRC CRL - FCM Database / GC-MS

Sample Name: Acetic acid, Hydroxy
Solvent: Ethanol
Concentration: 100 µg/mL

Date: 16/01/2008
CAS: 000079-14-1
PM ref: 18117 [U.R.N. M221]

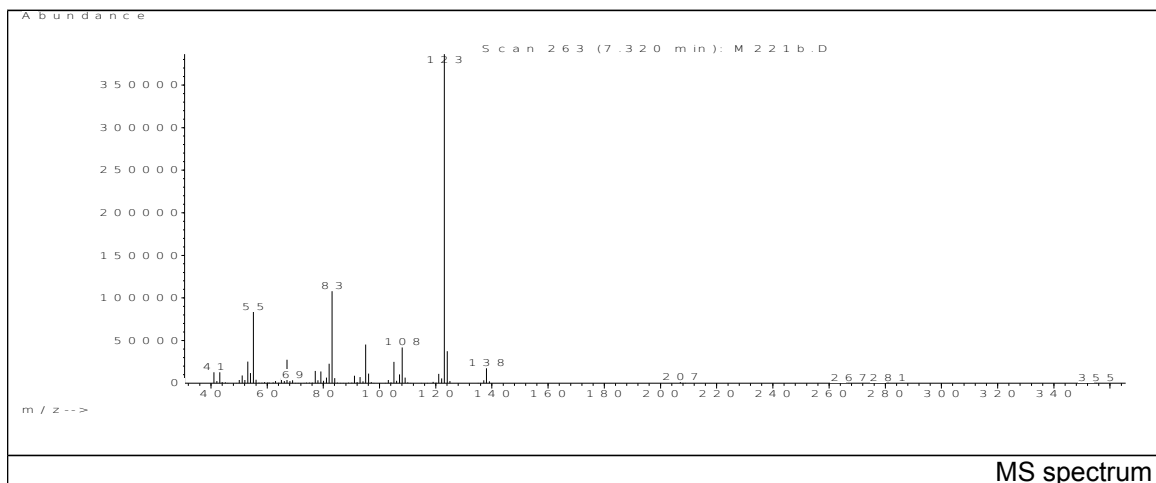


m/z	Abundance	Ion Intensity %	m/z	Abundance	Ion Intensity %
51.10	18512.0	3.76	104.10	13202.0	2.68
63.10	12381.0	2.52	105.10	492096.0	100.00
65.10	15170.0	3.08	106.10	43384.0	8.82
77.10	47584.0	9.67	115.10	19280.0	3.92
78.10	17040.0	3.46	117.10	15537.0	3.16
79.10	29184.0	5.93	119.10	69640.0	14.15
91.10	43984.0	8.94	120.10	286144.0	58.15
103.10	33984.0	6.91	121.10	27864.0	5.66

Spectrometer: HEWLETT PACKARD GC/MS 6890/5973
Inlet system: capillary GC/MS
Scan Range: 40-700 amu
Source temperature: 230°C

Flow: 1.2 mL/min
Column: HP-5MS (30 m x 0.25 mm x 0.25 µm)
Programme temperature: 55°C (3 min)
20°C/min (350°C); 10 min

JRC CRL - FCM Database / GC-MS

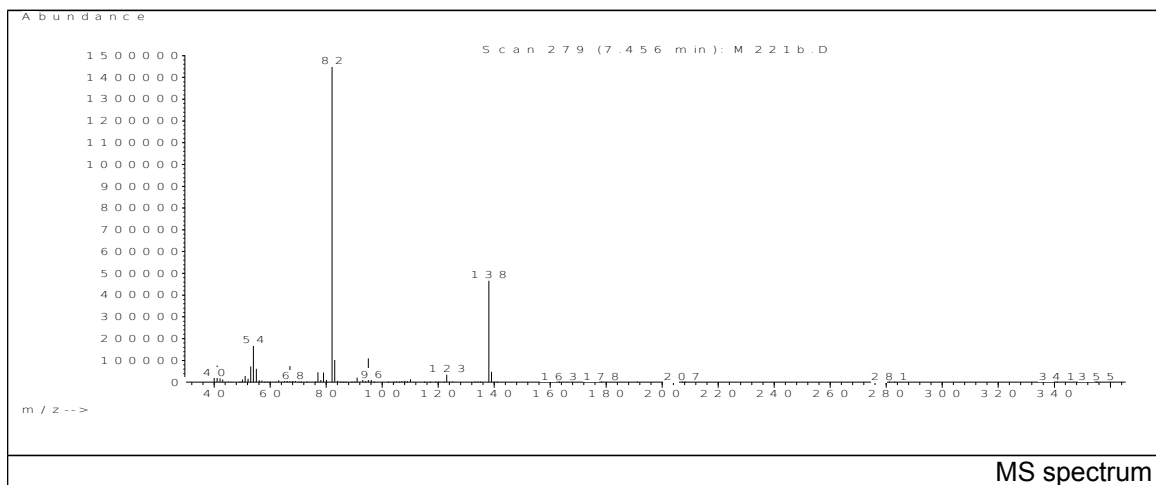


m/z	Abundance	Ion Intensity %	m/z	Abundance	Ion Intensity %
41.10	12742.0	3.30	82.10	22752.0	5.89
43.10	12745.0	3.30	83.10	107920.0	27.93
53.10	25280.0	6.54	95.10	45344.0	11.74
54.10	11893.0	3.08	105.10	25024.0	6.48
55.10	83704.0	21.66	108.10	41744.0	10.80
67.10	27408.0	7.09	123.10	386368.0	100.00
77.10	14364.0	3.72	124.10	37440.0	9.69
79.10	13739.0	3.56	138.10	17560.0	4.54

Spectrometer: HEWLETT PACKARD GC/MS 6890/5973
 Inlet system: capillary GC/MS
 Scan Range: 40-700 amu
 Source temperature: 230°C

Flow: 1.2 mL/min
 Column: HP-5MS (30 m x 0.25 mm x 0.25 µm)
 Programme temperature: 55°C (3 min)
 20°C/min (350°C); 10 min

JRC CRL - FCM Database / GC-MS



m/z	Abundance	Ion Intensity %	m/z	Abundance	Ion Intensity %
40.10	8498.0	1.66	79.10	13252.0	2.59
41.10	24896.0	4.86	82.10	511936.0	100.00
51.10	9026.0	1.76	83.10	31520.0	6.16
53.10	22336.0	4.36	91.10	6815.0	1.33
54.10	51968.0	10.15	95.10	33792.0	6.60
55.10	20504.0	4.01	123.10	11190.0	2.19
67.10	23296.0	4.55	138.10	149120.0	29.13
77.10	14499.0	2.83	139.10	14682.0	2.87

Spectrometer: HEWLETT PACKARD GC/MS 6890/5973
 Inlet system: capillary GC/MS
 Scan Range: 40-700 amu
 Source temperature: 230°C

Flow: 1.2 mL/min
 Column: HP-5MS (30 m x 0.25 mm x 0.25 µm)
 Programme temperature: 55°C (3 min)
 20°C/min (350°C); 10 min