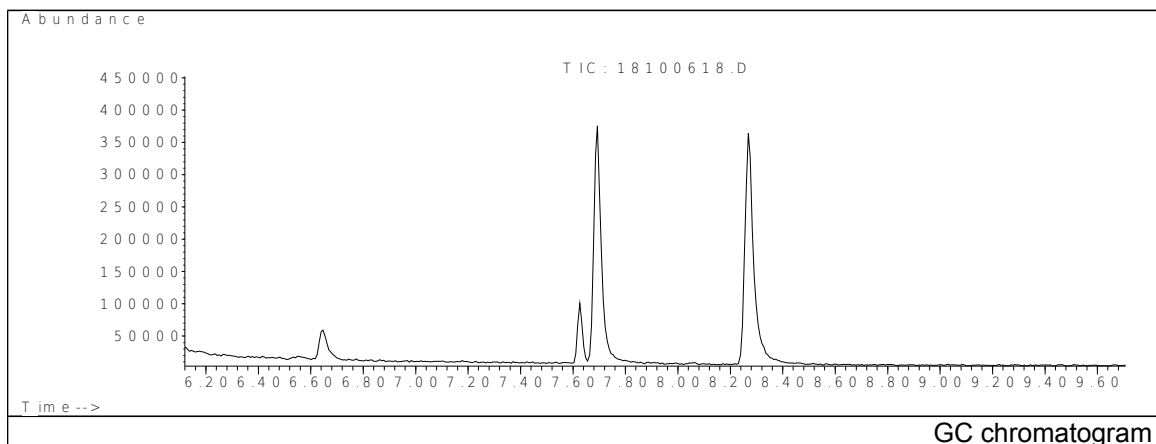


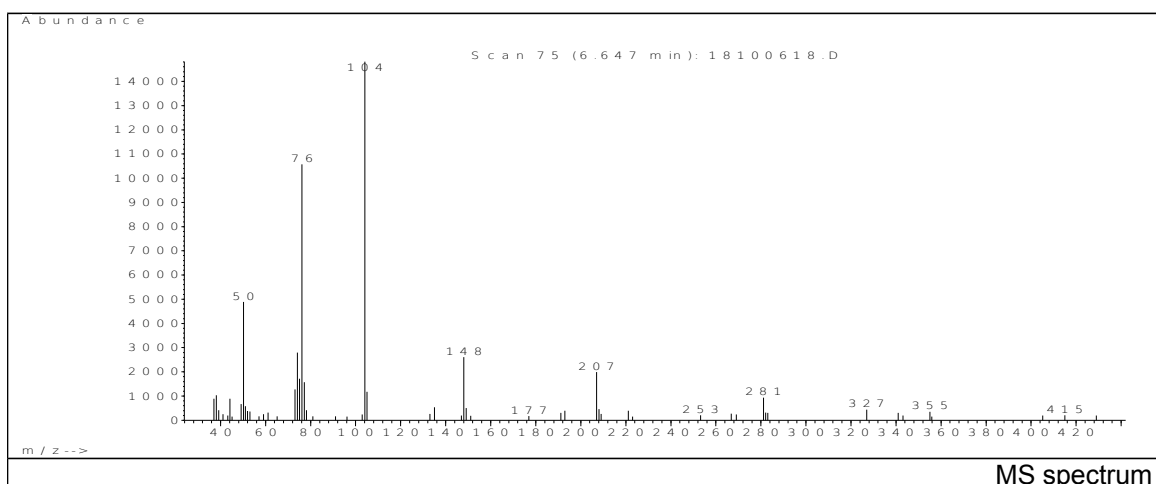
JRC CRL - FCM Database / GC-MS

Sample Name: Isophthalic acid dichloride
Solvent: Hexane
Concentration: 100 µg/mL

Date: 26/10/2006
CAS: 000099-63-8
PM ref: 19180 [U.R.N. M216]



GC chromatogram



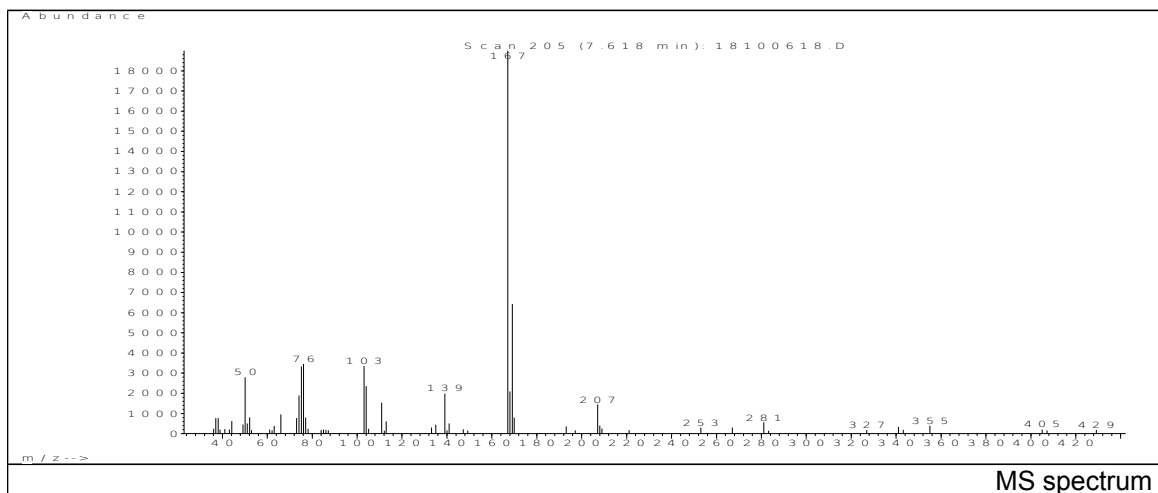
MS spectrum

m/z	Abundance	Ion Intensity %	m/z	Abundance	Ion Intensity %
37.05	887.0	5.99	75.05	1719.0	11.60
38.05	1028.0	6.94	76.15	10575.0	71.38
44.15	884.0	5.97	77.15	1568.0	10.58
49.15	669.0	4.52	104.05	14816.0	100.00
50.15	4893.0	33.03	105.05	1174.0	7.92
51.05	584.0	3.94	148.05	2611.0	17.62
73.05	1279.0	8.63	207.05	1990.0	13.43
74.15	2796.0	18.87	281.15	939.0	6.34

Spectrometer: HEWLETT PACKARD GC/MS 6890/5973
Inlet system: capillary GC/MS
Scan Range: 40-700 amu
Source temperature: 230°C

Flow: 1.2 mL/min
Column: HP-5MS (30 m x 0.25 mm x 0.25 µm)
Programme temperature: 60°C; 15°C/min (250°C)
10°C/min (325°C); 10 min

JRC CRL - FCM Database / GC-MS

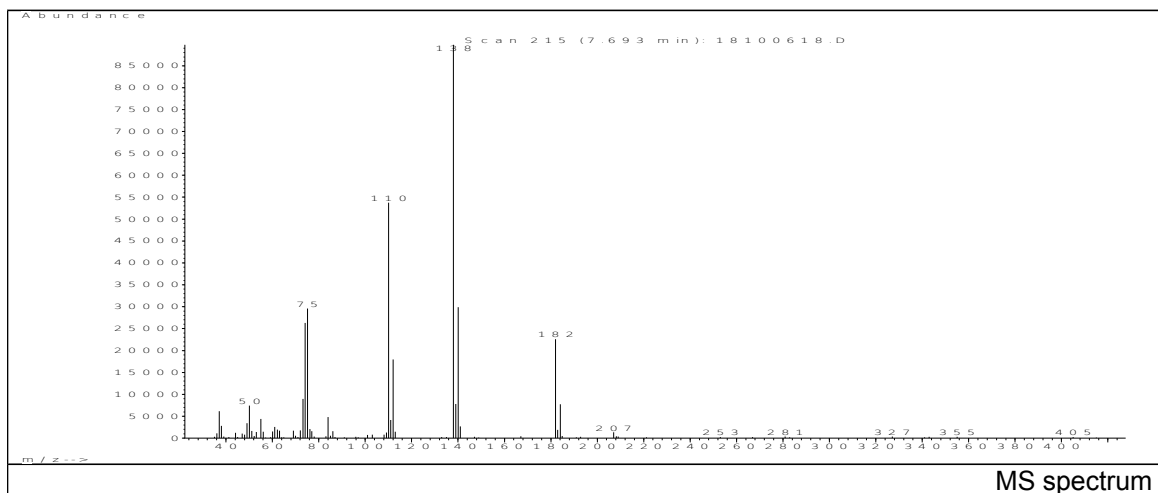


m/z	Abundance	Ion Intensity %	m/z	Abundance	Ion Intensity %
50.15	2794.0	14.71	104.05	2355.0	12.39
52.15	809.0	4.26	110.95	1543.0	8.12
66.05	960.0	5.05	139.05	1989.0	10.47
74.05	1900.0	10.00	167.05	19000.0	100.00
75.15	3340.0	17.58	168.05	2090.0	11.00
76.15	3451.0	18.16	169.05	6433.0	33.86
77.05	798.0	4.20	169.95	790.0	4.16
103.05	3344.0	17.60	207.05	1440.0	7.58

Spectrometer: HEWLETT PACKARD GC/MS 6890/5973
 Inlet system: capillary GC/MS
 Scan Range: 40-700 amu
 Source temperature: 230°C

Flow: 1.2 mL/min
 Column: HP-5MS (30 m x 0.25 mm x 0.25 µm)
 Programme temperature: 60°C; 15°C/min (250°C)
 10°C/min (325°C); 10 min

JRC CRL - FCM Database / GC-MS

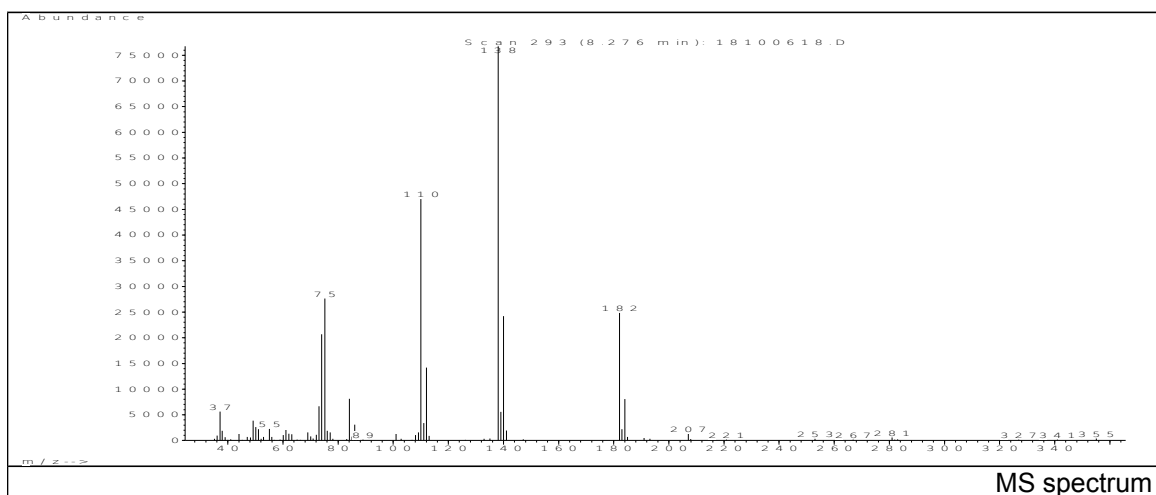


m/z	Abundance	Ion Intensity %	m/z	Abundance	Ion Intensity %
37.15	6167.0	6.87	110.05	53736.0	59.83
49.15	3455.0	3.85	111.05	4165.0	4.64
50.15	7461.0	8.31	112.05	17936.0	19.97
55.05	4375.0	4.87	138.05	89808.0	100.00
73.15	8959.0	9.98	139.05	7791.0	8.68
74.15	26328.0	29.32	140.05	29888.0	33.28
75.15	29608.0	32.97	182.05	22600.0	25.16
84.05	4822.0	5.37	184.05	7705.0	8.58

Spectrometer: HEWLETT PACKARD GC/MS 6890/5973
 Inlet system: capillary GC/MS
 Scan Range: 40-700 amu
 Source temperature: 230°C

Flow: 1.2 mL/min
 Column: HP-5MS (30 m x 0.25 mm x 0.25 µm)
 Programme temperature: 60°C; 15°C/min (250°C)
 10°C/min (325°C); 10 min

JRC CRL - FCM Database / GC-MS



m/z	Abundance	Ion Intensity %	m/z	Abundance	Ion Intensity %
37.15	5651.0	7.36	110.05	46976.0	61.19
49.15	3884.0	5.06	111.05	3404.0	4.43
50.15	2603.0	3.39	112.05	14193.0	18.49
73.05	6676.0	8.70	138.05	76768.0	100.00
74.05	20656.0	26.91	139.05	5568.0	7.25
75.15	27648.0	36.02	140.05	24224.0	31.55
84.05	8100.0	10.55	182.05	24840.0	32.36
86.05	3099.0	4.04	184.05	8085.0	10.53

Spectrometer: HEWLETT PACKARD GC/MS 6890/5973
 Inlet system: capillary GC/MS
 Scan Range: 40-700 amu
 Source temperature: 230°C

Flow: 1.2 mL/min
 Column: HP-5MS (30 m x 0.25 mm x 0.25 µm)
 Programme temperature: 60°C; 15°C/min (250°C)
 10°C/min (325°C); 10 min