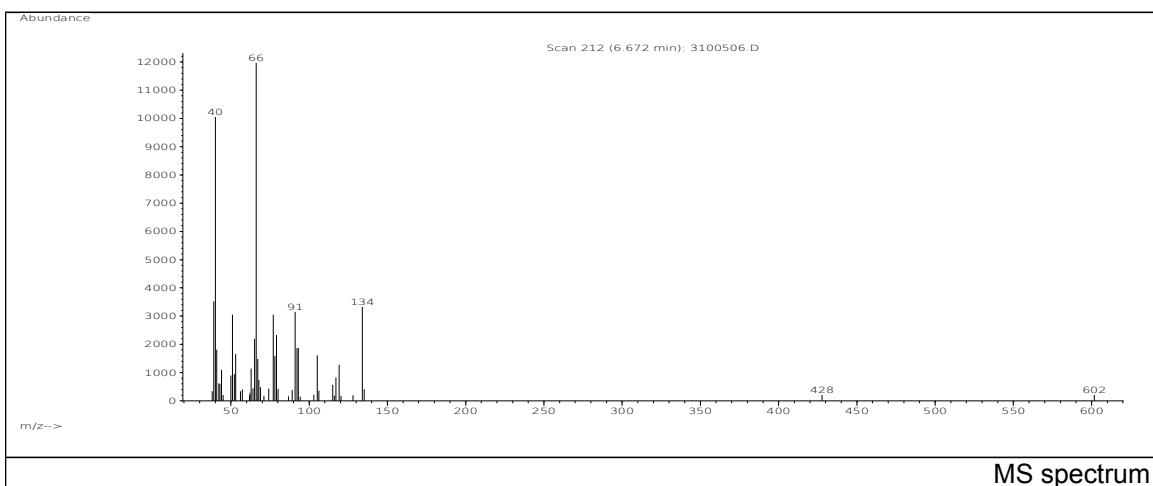
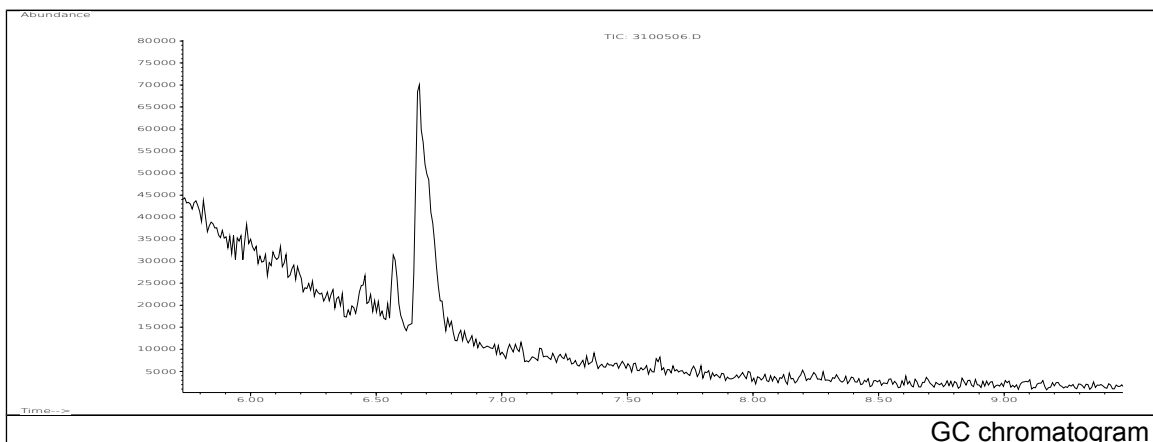


JRC CRL - FCM Database / GC-MS

Sample Name: Dicyclopentadiene
Solvent: Hexane
Concentration: 100 µg/mL

Date: 03/010/2005
CAS: 000077-73-6
PM ref: 15730 [U.R.N. M212]



m/z	Abundance	Ion Intensity %	m/z	Abundance	Ion Intensity %
39.10	3523,0	28,60	78.10	1591,0	12,92
40.00	10062,0	81,69	79.10	2332,0	18,93
41.00	1811,0	14,70	91.00	3152,0	25,59
51.00	3048,0	24,74	92.20	1868,0	15,16
53.10	1664,0	13,51	93.00	1870,0	15,18
65.10	2200,0	17,86	105.10	1612,0	13,09
66.10	12318,0	100,00	134.00	3336,0	27,08
77.10	3048,0	24,74			

Spectrometer: HEWLETT PACKARD GC/MS 6890/5973
Inlet system: capillary GC/MS
Scan Range: 40-700 amu
Source temperature: 230 °C

Flow: 1.2 mL/min
Column: DB 17-HT (30 m x 0.25 mm x 0.15 µm)
Programme temperature: 40 °C (3 min); 20 °C/min
(350 °C); 350 °C (20 min)