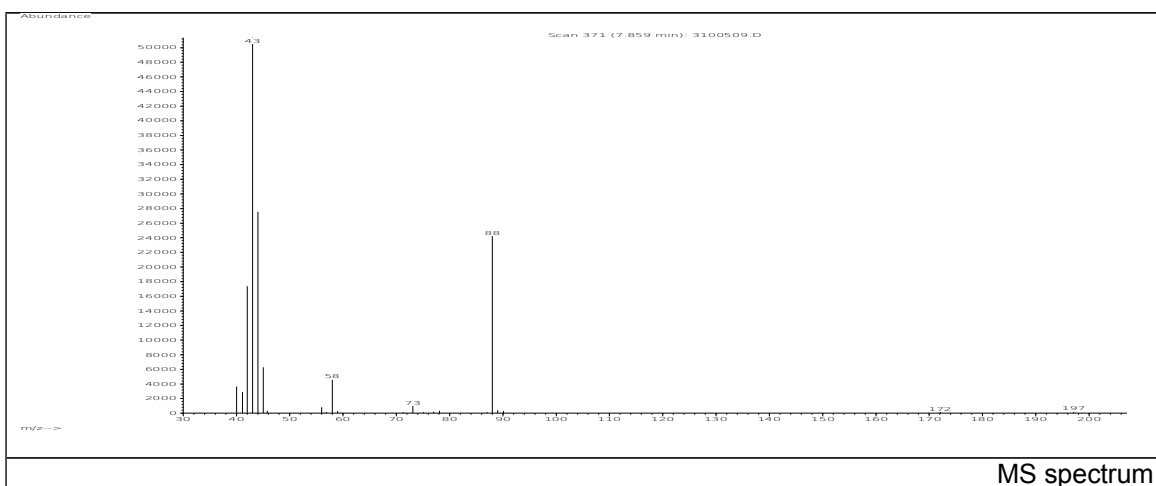
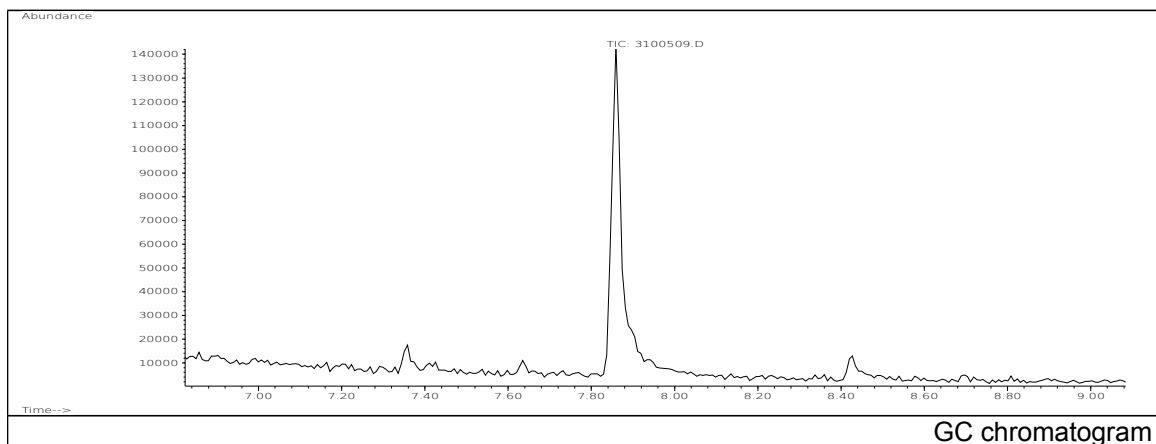


# JRC CRL - FCM Database / GC-MS

Sample Name: Ethylene carbonate  
Solvent: Methanol  
Concentration: 100 µg/mL

Date: 03/010/2005  
CAS: 000096-49-1  
PM ref: 16955 [U.R.N. M208]



m/z	Abundance	Ion Intensity %	m/z	Abundance	Ion Intensity %
40.00	3665,0	7,14	58.00	4658,0	9,07
41.10	2907,0	5,66	59.00	305,0	0,59
42.00	17384,0	33,85	73.10	991,0	1,93
43.00	51352,0	100,00	78.10	328,0	0,64
44.00	27560,0	53,67	88.00	24216,0	47,16
45.00	6269,0	12,21	89.00	413,0	0,80
45.80	347,0	0,68	90.10	298,0	0,58
56.00	829,0	1,61			

Spectrometer: HEWLETT PACKARD GC/MS 6890/5973  
Inlet system: capillary GC/MS  
Scan Range: 40-700 amu  
Source temperature: 230 °C

Flow: 1.2 mL/min  
Column: DB 17-HT (30 m x 0.25 mm x 0.15 µm)  
Programme temperature: 40 °C (3 min); 20 °C/min  
(350 °C); 350 °C (20 min)