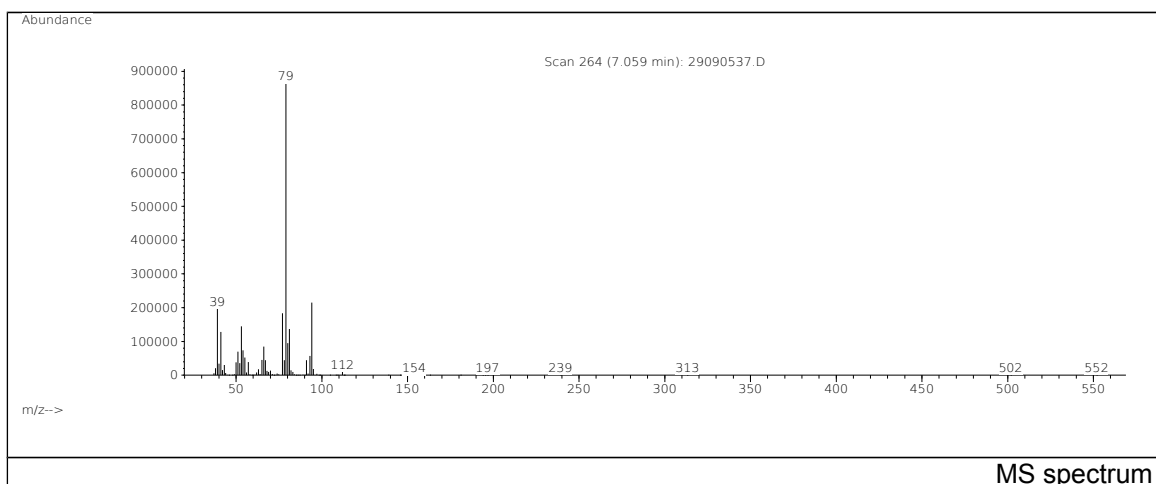
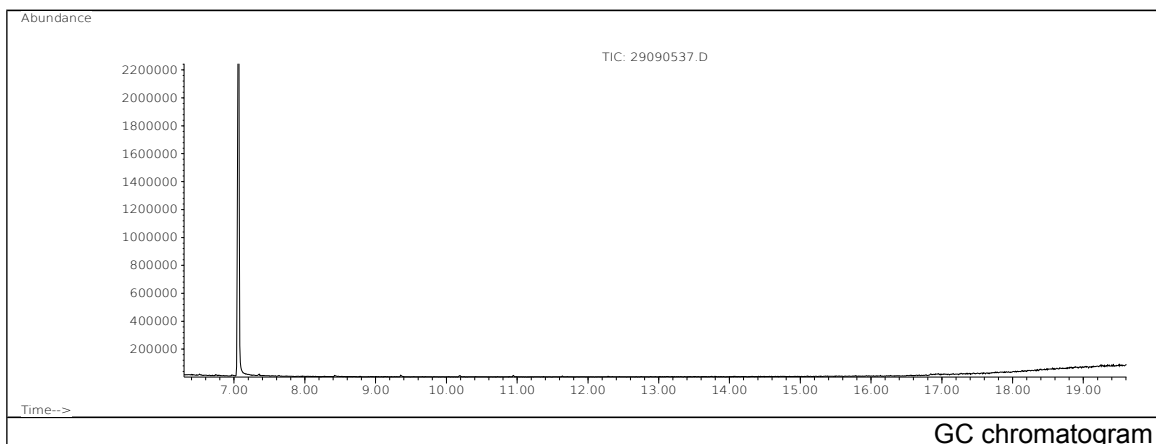


# JRC CRL - FCM Database / GC-MS

Sample Name: 4-(Hydroxymethyl)-1-cyclohexene  
 Solvent: Methanol  
 Concentration: 100 µg/mL

Date: 29/09/2005  
 CAS: 001679-51-2  
 PM ref: 18896 [U.R.N. M198]



m/z	Abundance	Ion Intensity %	m/z	Abundance	Ion Intensity %
39.10	196096,0	21,63	77.10	183424,0	20,23
41.10	127944,0	14,11	78.10	44488,0	4,91
51.10	69472,0	7,66	79.10	906496,0	100,00
53.10	144448,0	15,93	80.10	95240,0	10,51
54.10	73584,0	8,12	81.10	136704,0	15,08
55.10	52592,0	5,80	93.10	56984,0	6,29
65.10	45216,0	4,99	94.10	214720,0	23,69
66.10	84928,0	9,37			

Spectrometer: HEWLETT PACKARD GC/MS 6890/5973  
 Inlet system: capillary GC/MS  
 Scan Range: 40-700 amu  
 Source temperature: 230 °C

Flow: 1.2 mL/min  
 Column: DB 17-HT (30 m x 0.25 mm x 0.15 µm)  
 Programme temperature: 40 °C (3 min); 20 °C/min  
 (350 °C); 350 °C (20 min)