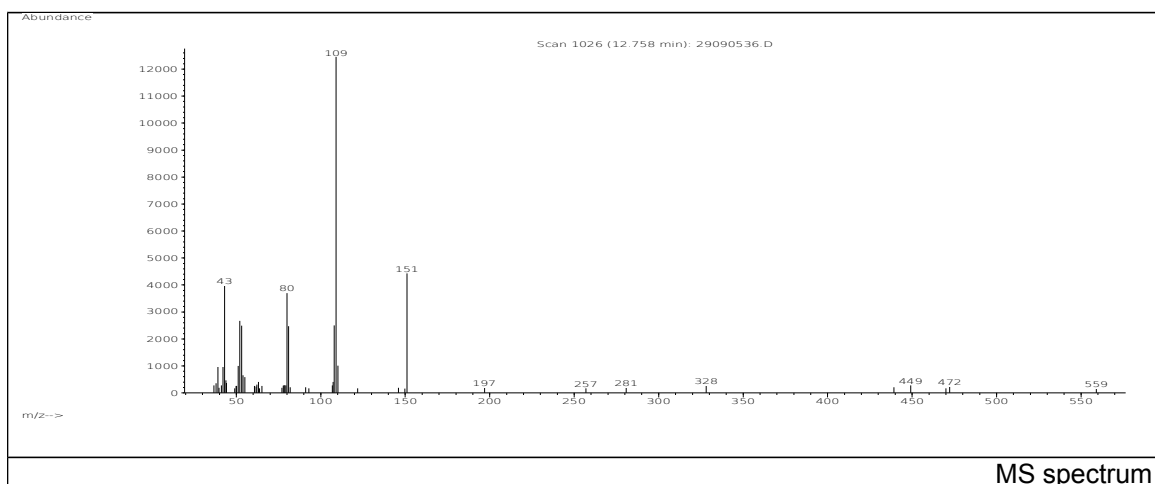
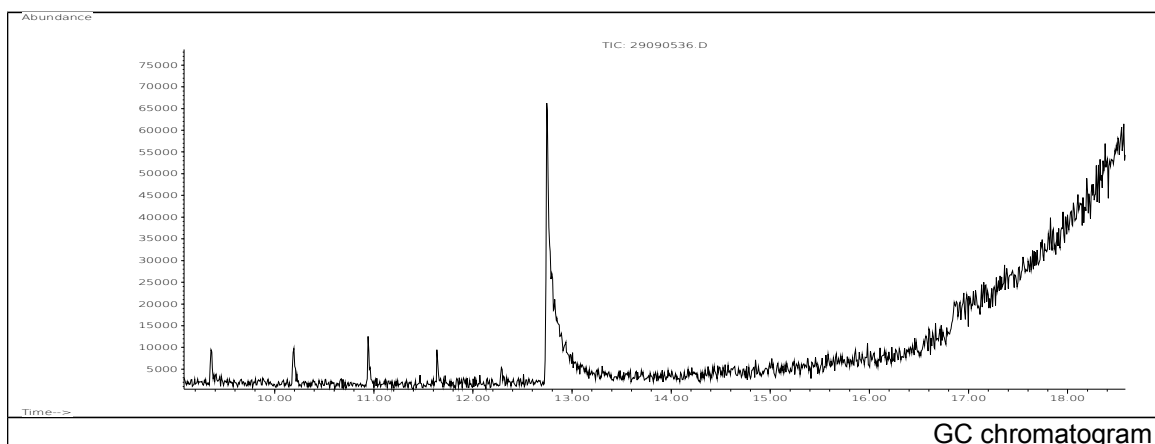


# JRC CRL - FCM Database / GC-MS

Sample Name: N-(4-Hydroxyphenyl)acetamide  
Solvent: Methanol  
Concentration: 100 µg/mL

Date: 29/09/2005  
CAS: 000103-90-2  
PM ref: 18898 [U.R.N. M197]



| m/z   | Abundance | Ion Intensity % | m/z    | Abundance | Ion Intensity % |
|-------|-----------|-----------------|--------|-----------|-----------------|
| 39.10 | 958,0     | 7,51            | 55.00  | 584,0     | 4,58            |
| 42.10 | 963,0     | 7,55            | 80.00  | 3698,0    | 28,98           |
| 43.00 | 3977,0    | 31,17           | 81.00  | 2472,0    | 19,37           |
| 43.80 | 464,0     | 3,64            | 108.00 | 2506,0    | 19,64           |
| 51.10 | 1001,0    | 7,84            | 109.10 | 12761,0   | 100,00          |
| 52.00 | 2675,0    | 20,96           | 110.10 | 1010,0    | 7,91            |
| 53.10 | 2497,0    | 19,57           | 151.00 | 4428,0    | 34,70           |
| 53.90 | 656,0     | 5,14            |        |           |                 |

Spectrometer: HEWLETT PACKARD GC/MS 6890/5973  
Inlet system: capillary GC/MS  
Scan Range: 40-700 amu  
Source temperature: 230 °C

Flow: 1.2 mL/min  
Column: DB 17-HT (30 m x 0.25 mm x 0.15 µm)  
Programme temperature: 40 °C (3 min); 20 °C/min  
(350 °C); 350 °C (20 min)