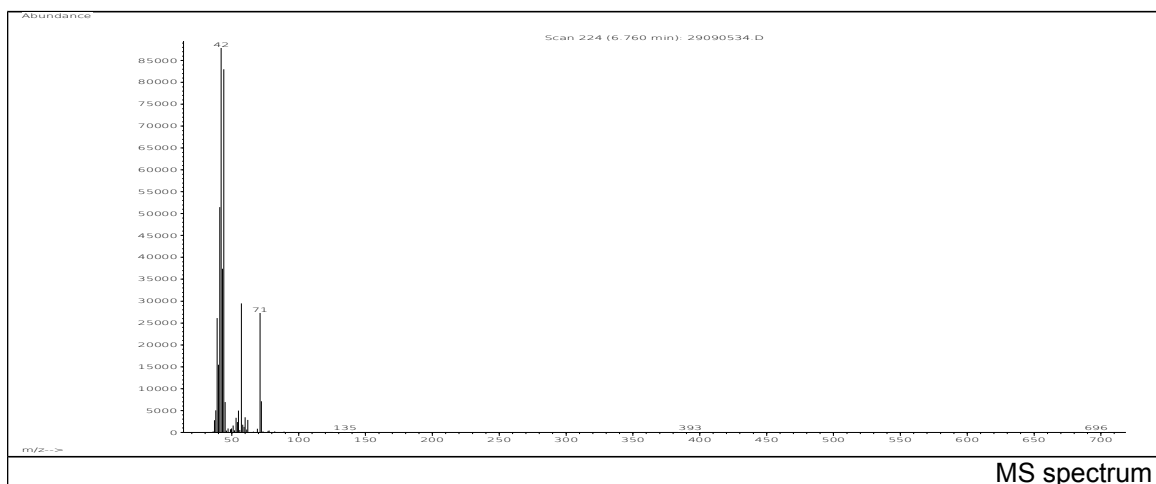
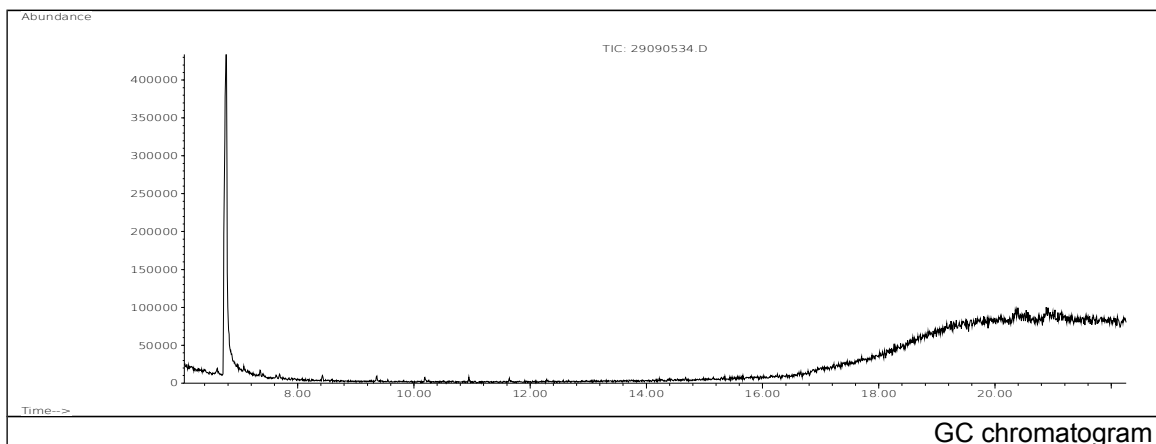


JRC CRL - FCM Database / GC-MS

Sample Name: 1,4-Butanediol
Solvent: Methanol
Concentration: 100 µg/mL

Date: 29/09/2005
CAS: 000110-63-4
PM ref: 13720 [U.R.N. M195]



m/z	Abundance	Ion Intensity %	m/z	Abundance	Ion Intensity %
38.10	5046,0	5,64	53.10	3363,0	3,76
39.00	26120,0	29,20	55.00	4983,0	5,57
40.00	15474,0	17,30	57.10	29504,0	32,99
41.10	51480,0	57,56	60.00	3433,0	3,84
42.10	89440,0	100,00	62.00	2817,0	3,15
43.10	37416,0	41,83	71.10	27264,0	30,48
44.10	83000,0	92,80	72.10	7123,0	7,96
45.10	6913,0	7,73			

Spectrometer: HEWLETT PACKARD GC/MS 6890/5973
Inlet system: capillary GC/MS
Scan Range: 40-700 amu
Source temperature: 230 °C

Flow: 1.2 mL/min
Column: DB 17-HT (30 m x 0.25 mm x 0.15 µm)
Programme temperature: 40 °C (3 min); 20 °C/min
(350 °C); 350 °C (20 min)