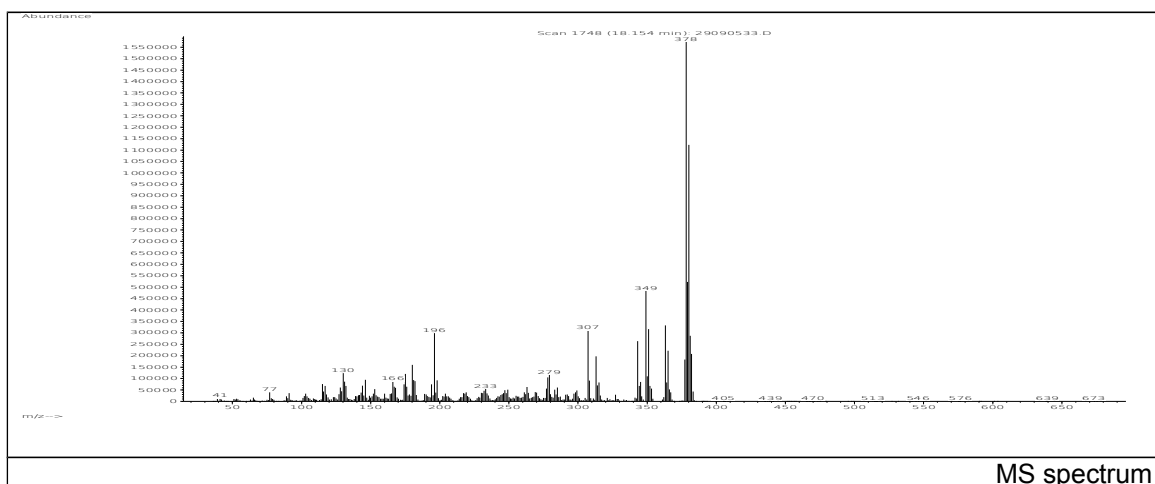
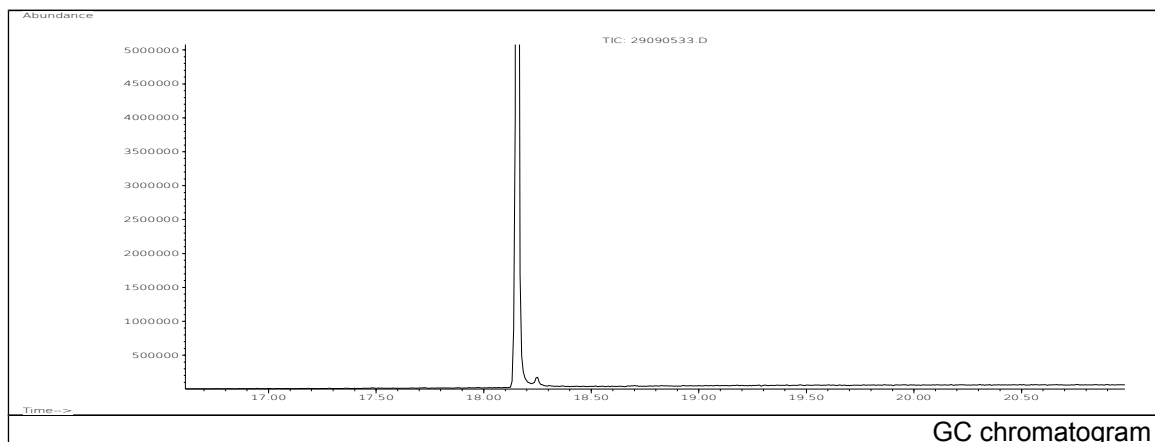


JRC CRL - FCM Database / GC-MS

Sample Name: 4,4'-Methylenebis(3-chloro-2,6-diethylaniline)
Solvent: Hexane
Concentration: 100 µg/mL

Date: 29/09/2005
CAS: 106246-33-7
PM ref: 21765 [U.R.N. M194]



m/z	Abundance	Ion Intensity %	m/z	Abundance	Ion Intensity %
180.10	159808,0	10,00	365.10	221184,0	13,84
196.10	298624,0	18,69	377.20	182656,0	11,43
307.20	309888,0	19,39	378.20	1597952,0	100,00
313.10	197632,0	12,37	379.20	522368,0	32,69
343.20	263552,0	16,49	380.20	1122304,0	70,23
349.10	483968,0	30,29	381.20	287488,0	17,99
351.10	316736,0	19,82	382.10	208192,0	13,03
363.10	333056,0	20,84			

Spectrometer: HEWLETT PACKARD GC/MS 6890/5973
Inlet system: capillary GC/MS
Scan Range: 40-700 amu
Source temperature: 230 °C

Flow: 1.2 mL/min
Column: DB 17-HT (30 m x 0.25 mm x 0.15 µm)
Programme temperature: 40 °C (3 min); 20 °C/min
(350 °C); 350 °C (20 min)