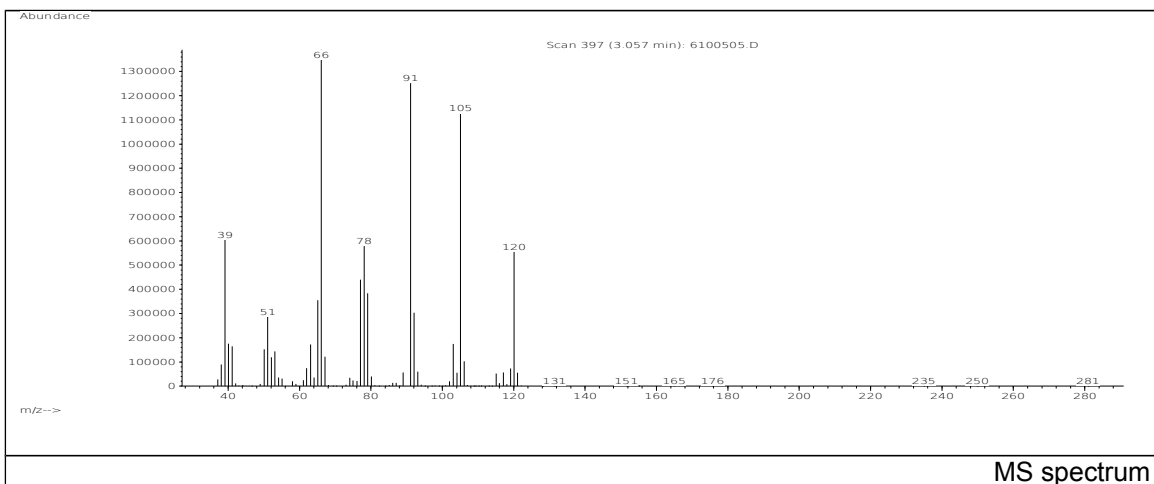
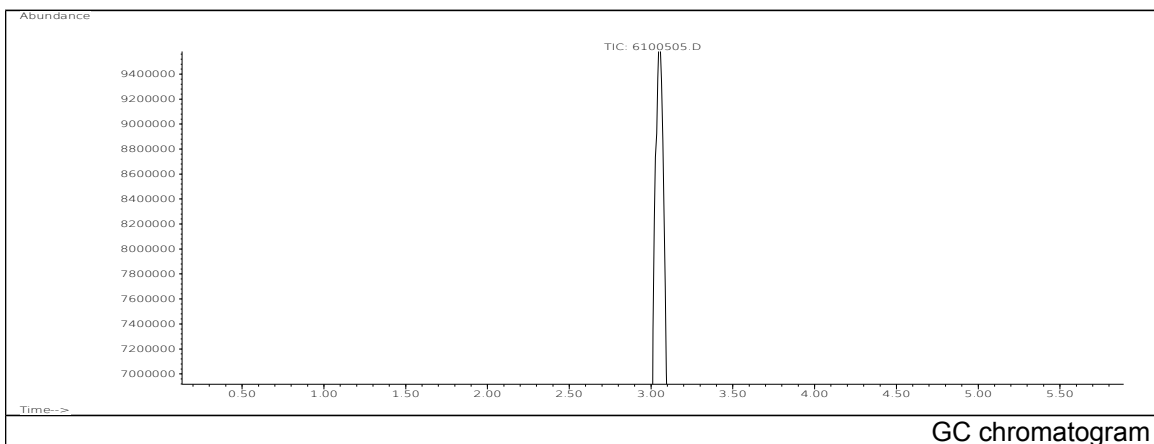


# JRC CRL - FCM Database / GC-MS

Sample Name: 5-Etilidenebicyclo(2,2,1)hept-2-ene  
Solvent: Hexane  
Concentration: 100 µg/mL

Date: 06/10/2005  
CAS: 016219-75-3  
PM ref: 17110 [U.R.N. M190]



m/z	Abundance	Ion Intensity %	m/z	Abundance	Ion Intensity %
39.10	605440,0	43,57	78.10	578496,0	41,63
40.10	175168,0	12,61	79.10	383232,0	27,58
41.10	164096,0	11,81	91.10	1251328,0	90,05
51.10	285888,0	20,57	92.10	303488,0	21,84
63.10	172608,0	12,42	103.10	174656,0	12,57
65.10	355520,0	25,58	105.10	1126400,0	81,06
66.10	1389568,0	100,00	120.10	556800,0	40,07
77.10	440320,0	31,69			

Spectrometer: HEWLETT PACKARD GC/MS 6890/5973  
Inlet system: capillary GC/MS  
Scan Range: 40-700 amu  
Source temperature: 230 °C

Flow: 1.2 mL/min  
Column: DB 17-HT (30 m x 0.25 mm x 0.15 µm)  
Programme temperature: 40 °C (3 min); 20 °C/min  
(350 °C); 350 °C (20 min)