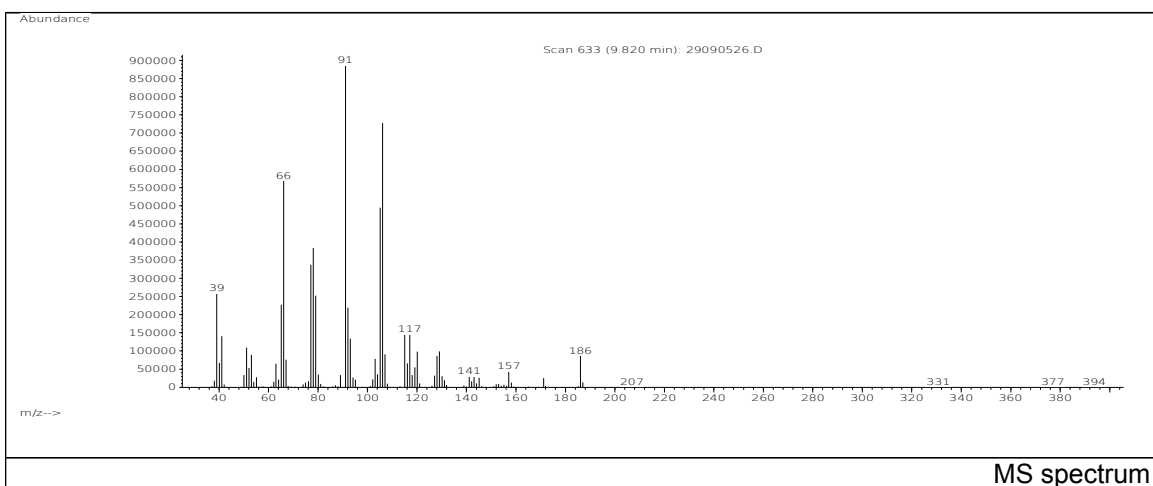
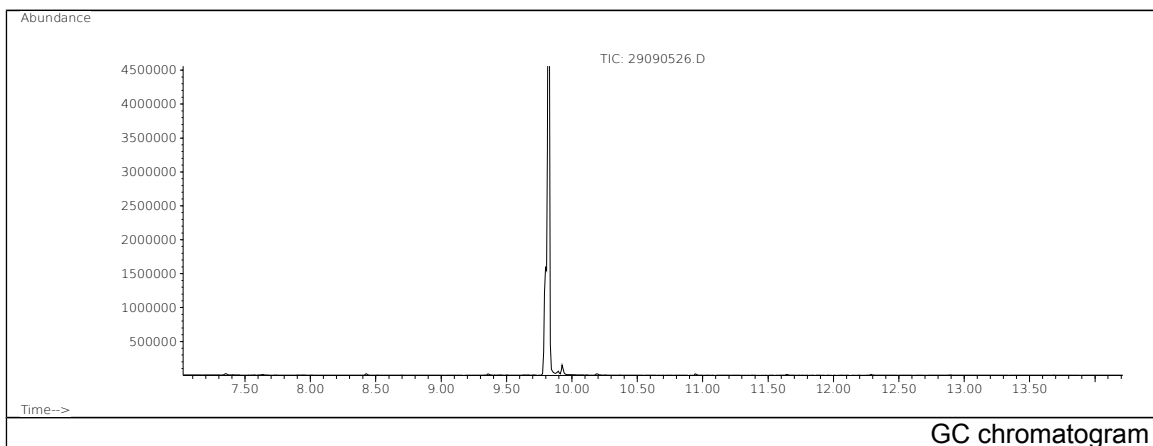


JRC CRL - FCM Database / GC-MS

Sample Name: 2-Ethylidene-1,4:5,8-dimethano-1,2,3,4,4a,5,8,8a-octahydronaphthalene
 Solvent: Methanol CAS: 038233-76-0
 Concentration: 100 µg/mL PM ref: 17111 [U.R.N. M185]



m/z	Abundance	Ion Intensity %	m/z	Abundance	Ion Intensity %
39.10	258240,0	28,22	91.10	915072,0	100,00
41.10	140864,0	15,39	92.10	219072,0	23,94
51.10	108912,0	11,90	93.10	134336,0	14,68
65.10	227392,0	24,85	105.10	494336,0	54,02
66.10	568576,0	62,13	106.10	727488,0	79,50
77.10	337664,0	36,90	115.10	144128,0	15,75
78.10	384000,0	41,96	117.10	146048,0	15,96
79.10	252096,0	27,55			

Spectrometer: HEWLETT PACKARD GC/MS 6890/5973
 Inlet system: capillary GC/MS
 Scan Range: 40-700 amu
 Source temperature: 230 °C

Flow: 1.2 mL/min
 Column: DB 17-HT (30 m x 0.25 mm x 0.15 µm)
 Programme temperature: 40 °C (3 min); 20 °C/min
 (350 °C); 350 °C (20 min)