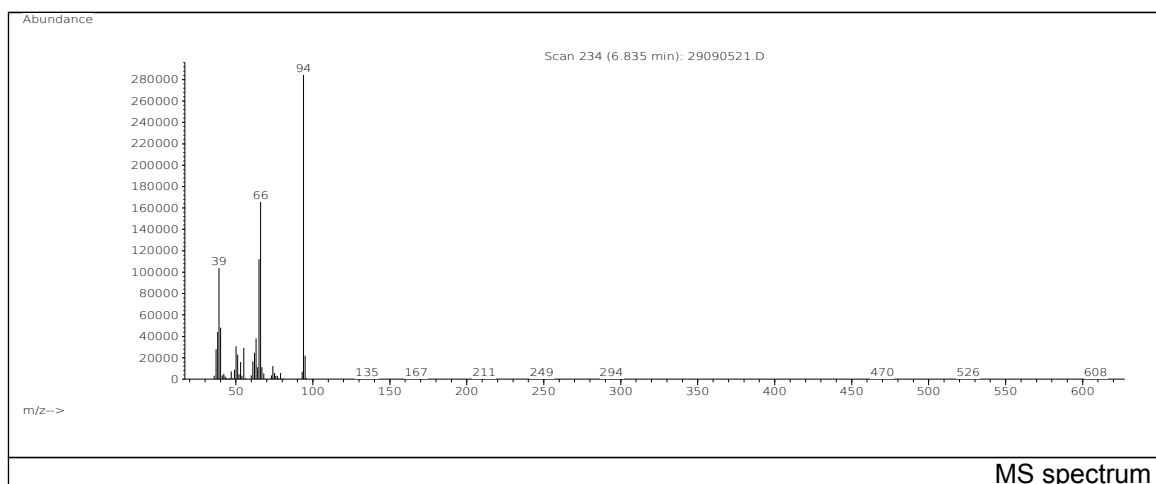
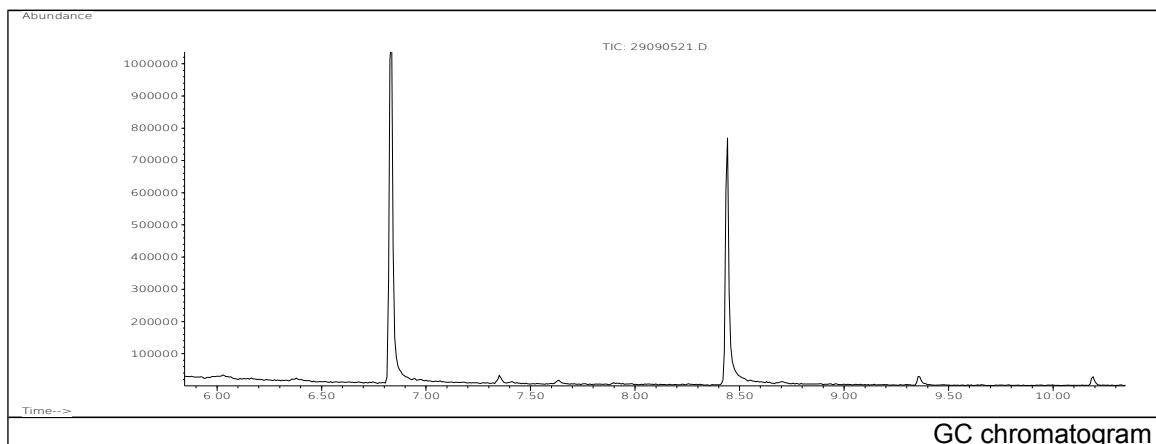


# JRC CRL - FCM Database / GC-MS

Sample Name: Acrylic acid, ethyl ester  
Solvent: Methanol  
Concentration: 100 µg/mL

Date: 29/09/2005  
CAS: 000140-88-5  
PM ref: 11470 [U.R.N. M177]

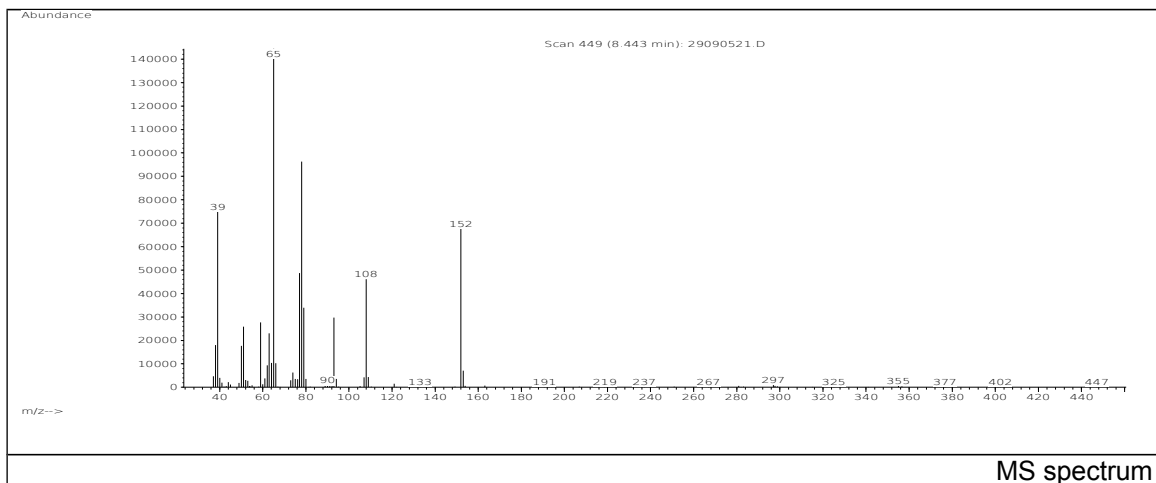


m/z	Abundance	Ion Intensity %	m/z	Abundance	Ion Intensity %
37.10	27920,0	9,43	55.10	29176,0	9,85
38.10	44192,0	14,92	61.10	16648,0	5,62
39.10	104064,0	35,14	62.10	24776,0	8,37
40.10	48256,0	16,30	63.10	38128,0	12,88
50.10	30736,0	10,38	65.10	112304,0	37,92
51.10	23040,0	7,78	66.10	165952,0	56,04
53.00	15872,0	5,36	94.00	296128,0	100,00
37.10	27920,0	9,43			

Spectrometer: HEWLETT PACKARD GC/MS 6890/5973  
Inlet system: capillary GC/MS  
Scan Range: 40-700 amu  
Source temperature: 230 °C

Flow: 1.2 mL/min  
Column: DB 17-HT (30 m x 0.25 mm x 0.15 µm)  
Programme temperature: 40 °C (3 min); 20 °C/min  
(350 °C); 350 °C (20 min)

# JRC CRL - FCM Database / GC-MS



m/z	Abundance	Ion Intensity %	m/z	Abundance	Ion Intensity %
38.10	18000,0	6,08	66.10	10230,0	3,45
39.10	74792,0	25,26	77.10	48720,0	16,45
50.10	17664,0	5,96	78.10	96240,0	32,50
51.10	25840,0	8,73	79.10	33920,0	11,45
59.00	27648,0	9,34	93.00	29784,0	10,06
63.00	23072,0	7,79	108.00	46064,0	15,56
64.10	10453,0	3,53	152.00	67576,0	22,82
65.10	144448,0	48,78			

Spectrometer: HEWLETT PACKARD GC/MS 6890/5973  
 Inlet system: capillary GC/MS  
 Scan Range: 40-700 amu  
 Source temperature: 230 °C

Flow: 1.2 mL/min  
 Column: DB 17-HT (30 m x 0.25 mm x 0.15 µm)  
 Programme temperature: 40 °C (3 min); 20 °C/min  
 (350 °C); 350 °C (20 min)