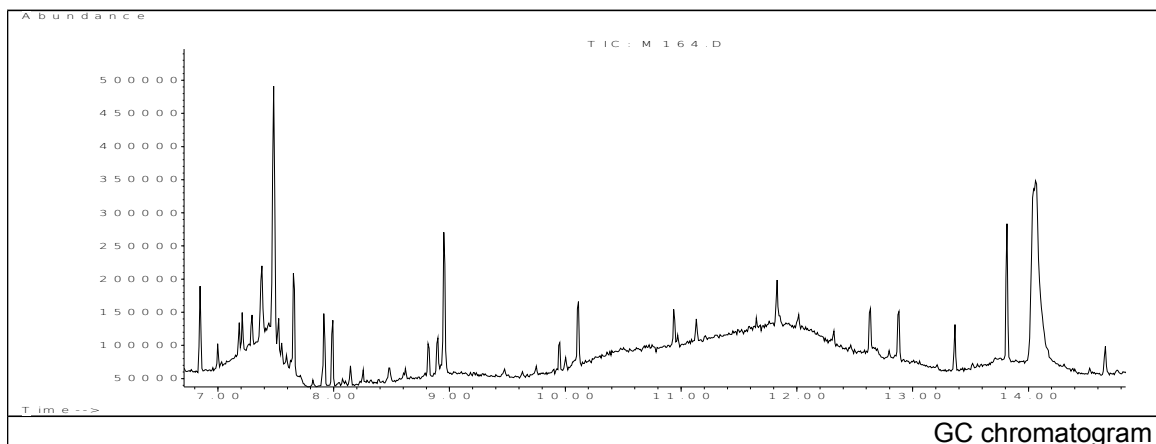


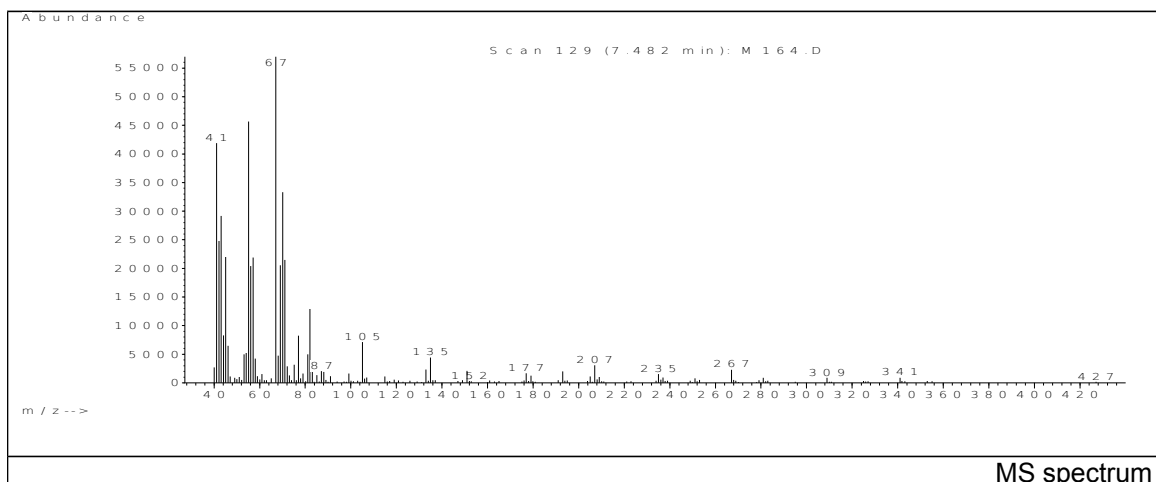
JRC CRL - FCM Database / GC-MS

Sample Name: 3-methyl-1,5-pentanediol
Solvent: Ethanol
Concentration: 100 µg/mL

Date: 15/01/2008
CAS: 004457-71-0
PM ref: - [U.R.N. M164]



GC chromatogram



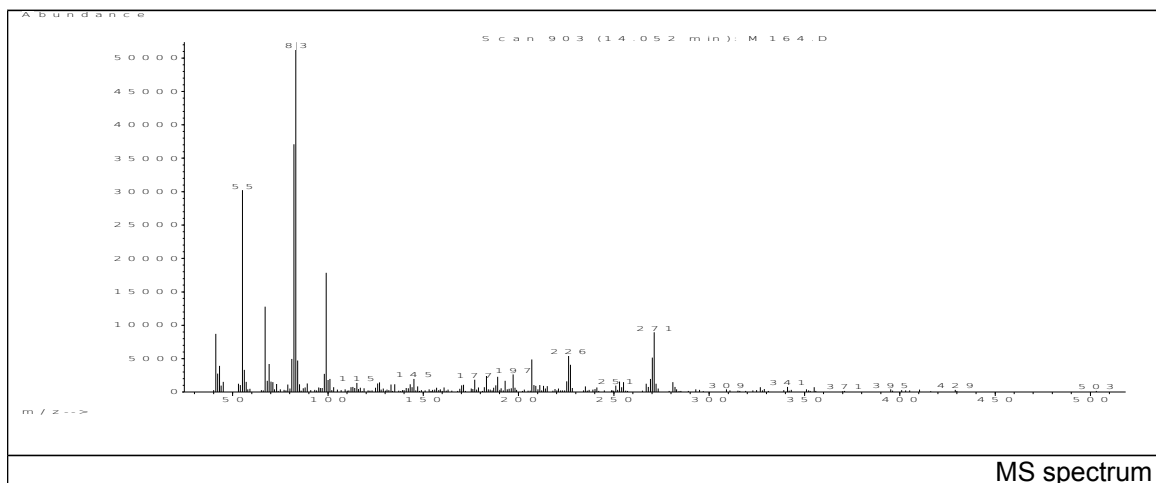
MS spectrum

m/z	Abundance	Ion Intensity %	m/z	Abundance	Ion Intensity %
41.10	41912.0	73.54	57.10	21888.0	38.41
42.10	24800.0	43.51	67.10	56992.0	100.00
43.10	29152.0	51.15	69.10	20568.0	36.09
44.10	8303.0	14.57	70.10	33320.0	58.46
45.10	21976.0	38.56	71.10	21472.0	37.68
46.10	6461.0	11.34	77.00	8248.0	14.47
55.10	45640.0	80.08	82.10	12907.0	22.65
56.10	20384.0	35.77	105.10	7125.0	12.50

Spectrometer: HEWLETT PACKARD GC/MS 6890/5973
Inlet system: capillary GC/MS
Scan Range: 40-700 amu
Source temperature: 230°C

Flow: 1.2 mL/min
Column: HP-5MS (30 m x 0.25 mm x 0.25 µm)
Programme temperature: 55°C; (3min)
20°C/min (350°C); 20 min

JRC CRL - FCM Database / GC-MS



m/z	Abundance	Ion Intensity %	m/z	Abundance	Ion Intensity %
41.10	8727.0	16.66	83.10	52392.0	100.00
43.10	3926.0	7.49	84.10	4730.0	9.03
55.10	30240.0	57.72	99.10	17840.0	34.05
56.10	3311.0	6.32	207.00	4890.0	9.33
67.10	12783.0	24.40	226.20	5407.0	10.32
69.10	4192.0	8.00	227.20	4070.0	7.77
81.10	4972.0	9.49	270.20	5179.0	9.89
82.10	37080.0	70.77	271.20	8947.0	17.08

Spectrometer: HEWLETT PACKARD GC/MS 6890/5973
 Inlet system: capillary GC/MS
 Scan Range: 40-700 amu
 Source temperature: 230°C

Flow: 1.2 mL/min
 Column: HP-5MS (30 m x 0.25 mm x 0.25 µm)
 Programme temperature: 55°C; (3min)
 20°C/min (350°C); 20 min