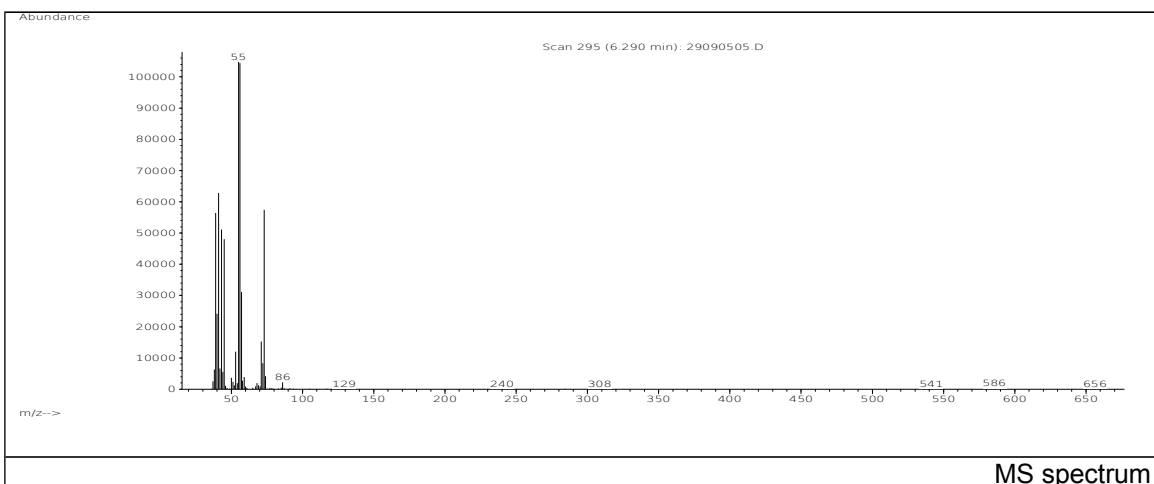
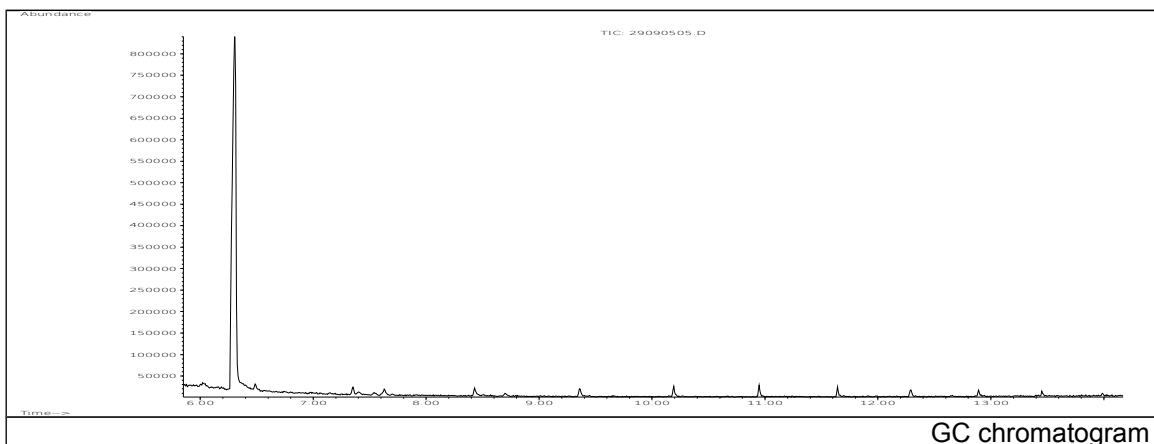


JRC CRL - FCM Database / GC-MS

Sample Name: 2,2-Dimethyl-1,3-propanediol
Solvent: Methanol
Concentration: 100 µg/mL

Date: 29/08/2005
CAS: 000126-30-7
PM ref: 16390 [U.R.N. M162]



m/z	Abundance	Ion Intensity %	m/z	Abundance	Ion Intensity %
38.00	7869,0	5,38	53.00	13052,0	8,93
39.10	72584,0	49,66	55.10	143936,0	98,47
40.00	25376,0	17,36	56.10	146176,0	100,00
41.10	86920,0	59,46	57.10	41464,0	28,37
42.10	10660,0	7,29	71.00	22088,0	15,11
43.10	73016,0	49,95	72.00	8609,0	5,89
44.10	6487,0	4,44	73.10	79544,0	54,42
45.10	64976,0	44,45			

Spectrometer: HEWLETT PACKARD GC/MS 6890/5973
Inlet system: capillary GC/MS
Scan Range: 40-700 amu
Source temperature: 230 °C

Flow: 1.2 mL/min
Column: DB 17-HT (30 m x 0.25 mm x 0.15 µm)
Programme temperature: 40 °C (3 min); 20 °C/min
(350 °C); 350 °C (20 min)