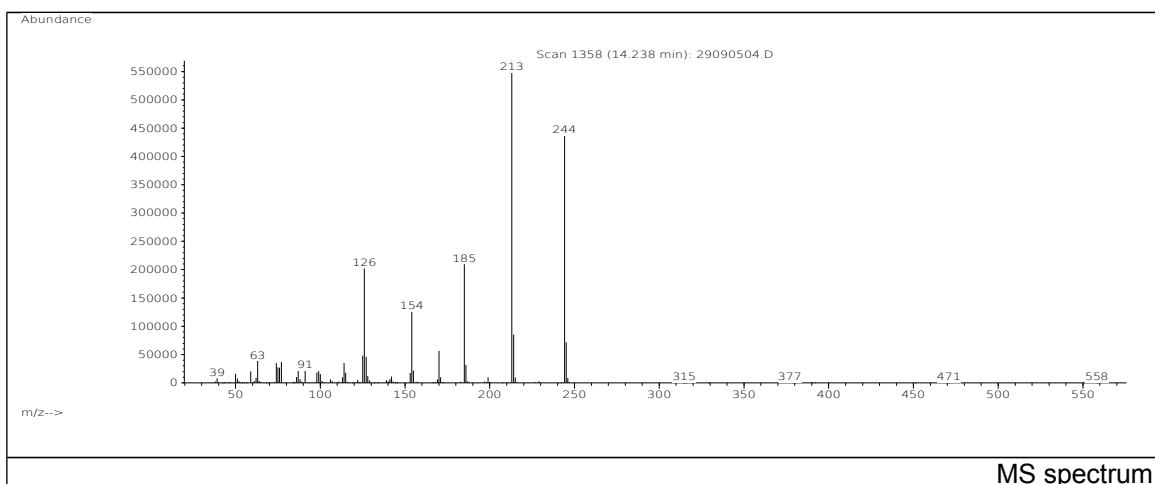
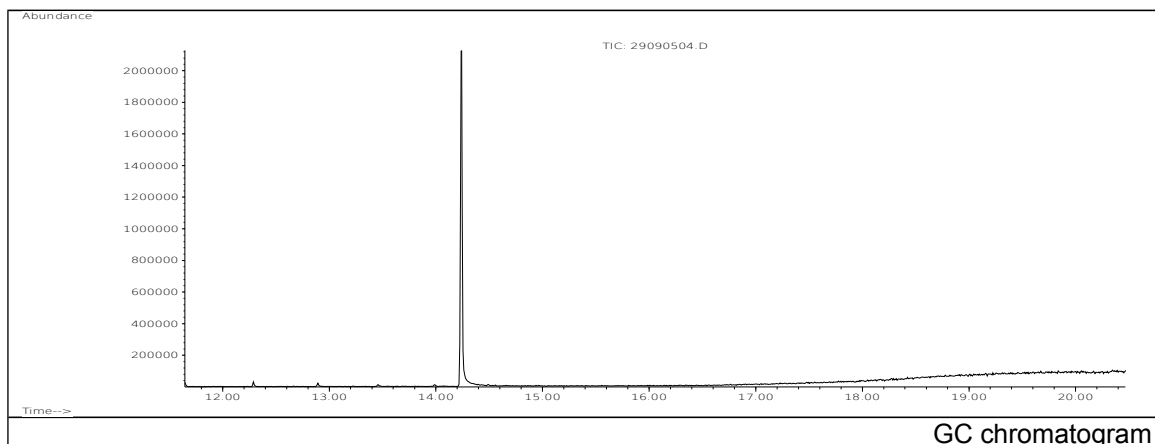


JRC CRL - FCM Database / GC-MS

Sample Name: 2,6-Naphthalenedicarboxylic acid, dimethyl ester
Solvent: Methanol
Concentration: 100 µg/mL

Date: 29/09/2005
CAS: 000840-65-3
PM ref: 22390 [U.R.N. A161]



m/z	Abundance	Ion Intensity %	m/z	Abundance	Ion Intensity %
63.00	38480,0	6,76	170.00	56768,0	9,97
74.00	34744,0	6,10	185.00	209472,0	36,80
77.00	36776,0	6,46	186.00	31856,0	5,60
114.00	34920,0	6,13	213.00	569280,0	100,00
125.00	48128,0	8,45	214.10	85080,0	14,95
126.00	202240,0	35,53	244.10	436736,0	76,72
127.00	45784,0	8,04	245.10	71784,0	12,61
154.00	125640,0	22,07			

Spectrometer: HEWLETT PACKARD GC/MS 6890/5973
Inlet system: capillary GC/MS
Scan Range: 40-700 amu
Source temperature: 230 °C

Flow: 1.2 mL/min
Column: DB 17-HT (30 m x 0.25 mm x 0.15 µm)
Programme temperature: 40 °C (3 min); 20 °C/min
(350 °C); 350 °C (20 min)