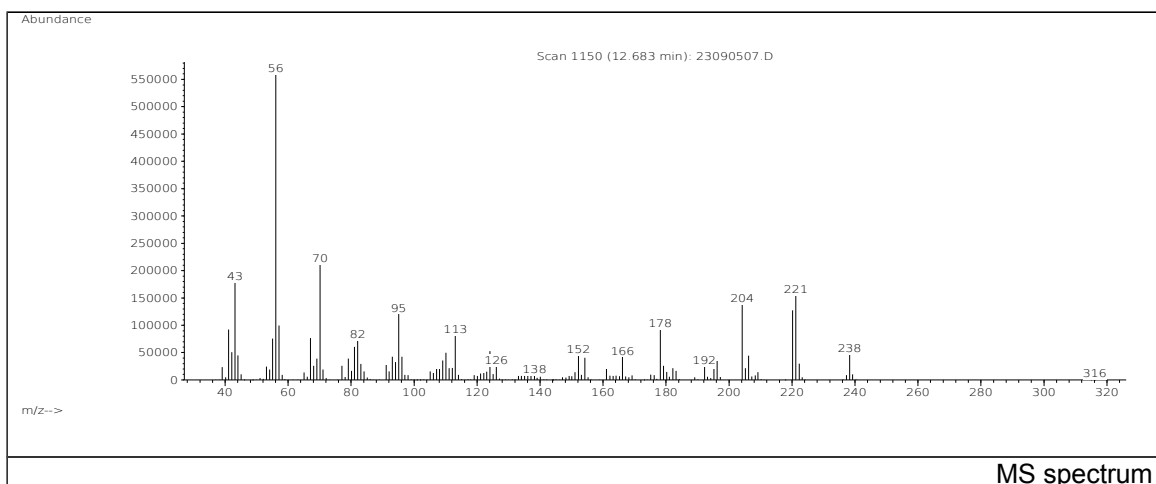
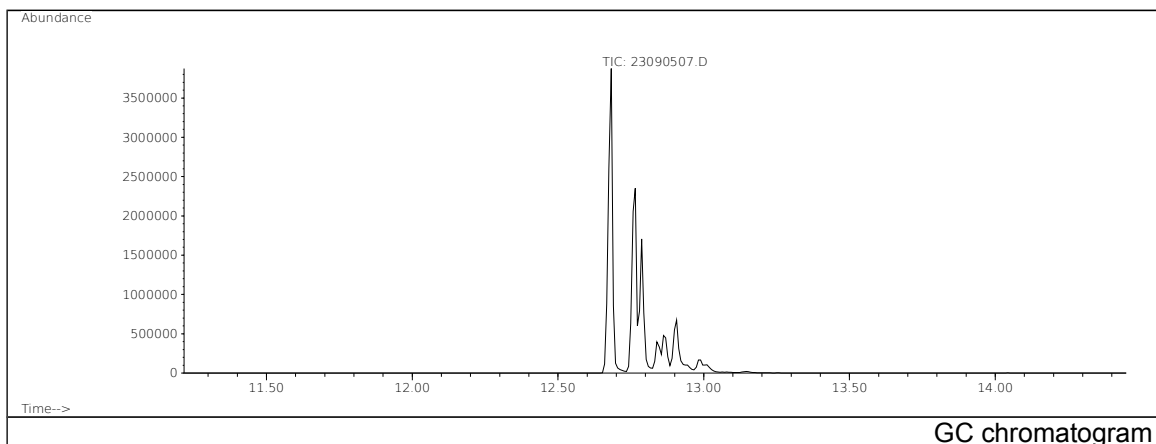


JRC CRL - FCM Database / GC-MS

Sample Name: 3,3'-Dimethyl-4,4'-diaminodicyclohexylmethane
Solvent: Hexane
Concentration: 100 µg/mL

Date: 22/09/2005
CAS: 006864-37-5
PM ref: 16210 [U.R.N. A150]

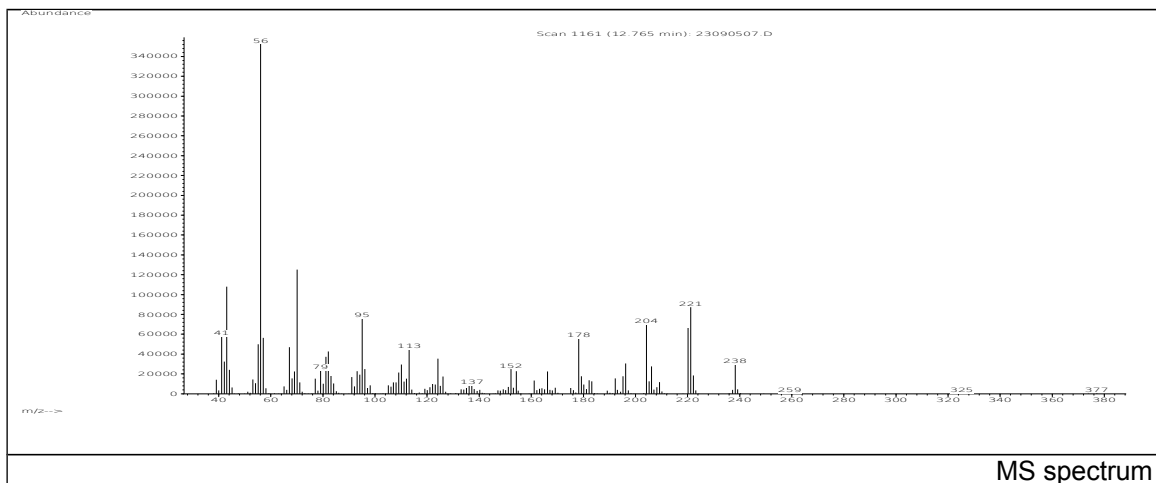


m/z	Abundance	Ion Intensity %	m/z	Abundance	Ion Intensity %
41.10	92192,0	15,85	82.10	71840,0	12,35
43.10	178560,0	30,71	95.10	120472,0	20,72
55.10	75568,0	13,00	113.10	80680,0	13,87
56.10	581504,0	100,00	178.20	92584,0	15,92
57.10	99768,0	17,16	204.20	138048,0	23,74
67.10	76736,0	13,20	220.20	127560,0	21,94
70.10	211008,0	36,29	221.20	154432,0	26,56
81.10	60672,0	10,43			

Spectrometer: HEWLETT PACKARD GC/MS 6890/5973
Inlet system: capillary GC/MS
Scan Range: 40-700 amu
Source temperature: 230 °C

Flow: 1.2 mL/min
Column: DB 17-HT (30 m x 0.25 mm x 0.15 µm)
Programme temperature: 40 °C (3 min); 20 °C/min
(350 °C); 350 °C (20 min)

JRC CRL - FCM Database / GC-MS



m/z	Abundance	Ion Intensity %	m/z	Abundance	Ion Intensity %
41.10	57712,0	9,92	82.10	42680,0	7,34
43.10	107872,0	18,55	95.10	75688,0	13,02
55.10	49888,0	8,58	113.10	44544,0	7,66
56.10	359360,0	61,80	178.20	55848,0	9,60
57.10	56336,0	9,69	204.20	69832,0	12,01
67.10	47008,0	8,08	220.20	66176,0	11,38
70.10	125184,0	21,53	221.20	87224,0	15,00
81.10	37192,0	6,40			

Spectrometer: HEWLETT PACKARD GC/MS 6890/5973
 Inlet system: capillary GC/MS
 Scan Range: 40-700 amu
 Source temperature: 230 °C

Flow: 1.2 mL/min
 Column: DB 17-HT (30 m x 0.25 mm x 0.15 µm)
 Programme temperature: 40 °C (3 min); 20 °C/min
 (350 °C); 350 °C (20 min)