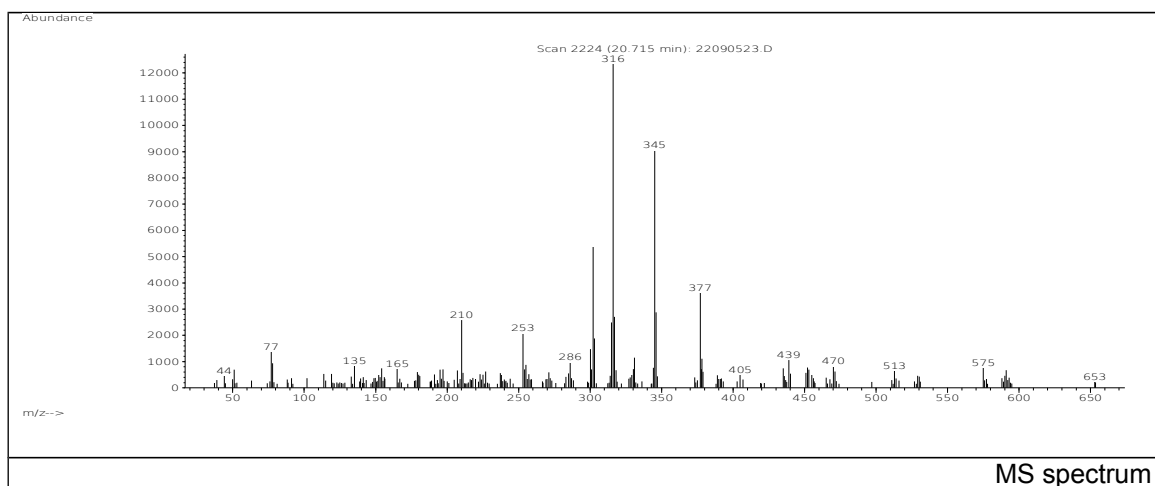
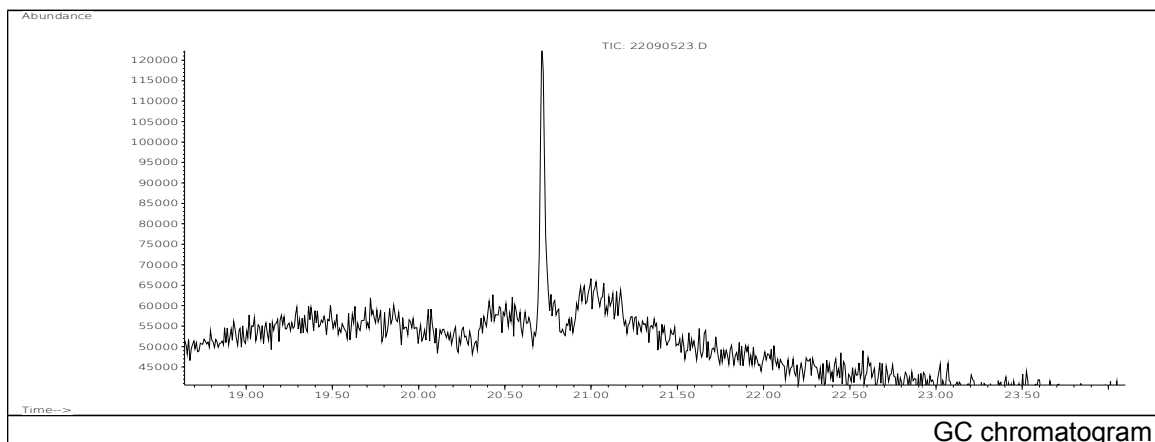


JRC CRL - FCM Database / GC-MS

Sample Name: 3,3-Bis(3-methyl-4-hydroxyphenyl)-2-indolinone
Solvent: methanol
Concentration: 100 µg/mL

Date: 22/09/2005
CAS: 047465-97-4
PM ref: 13600 [U.R.N. A145]



m/z	Abundance	Ion Intensity %	m/z	Abundance	Ion Intensity %
77.00	1372,0	10,78	317.10	2704,0	21,25
210.10	2580,0	20,28	331.10	1151,0	9,05
253.00	2089,0	16,42	345.10	9058,0	71,18
300.20	1480,0	11,63	346.20	2873,0	22,58
302.10	5367,0	42,18	377.10	3624,0	28,48
303.10	1880,0	14,77	378.20	1108,0	8,71
315.00	2496,0	19,61	439.00	1057,0	8,31
316.10	12725,0	100,00			

Spectrometer: HEWLETT PACKARD GC/MS 6890/5973
Inlet system: capillary GC/MS
Scan Range: 40-700 amu
Source temperature: 230 °C

Flow: 1.2 mL/min
Column: DB 17-HT (30 m x 0.25 mm x 0.15 µm)
Programme temperature: 40 °C (3 min); 20 °C/min
(350 °C); 350 °C (20 min)