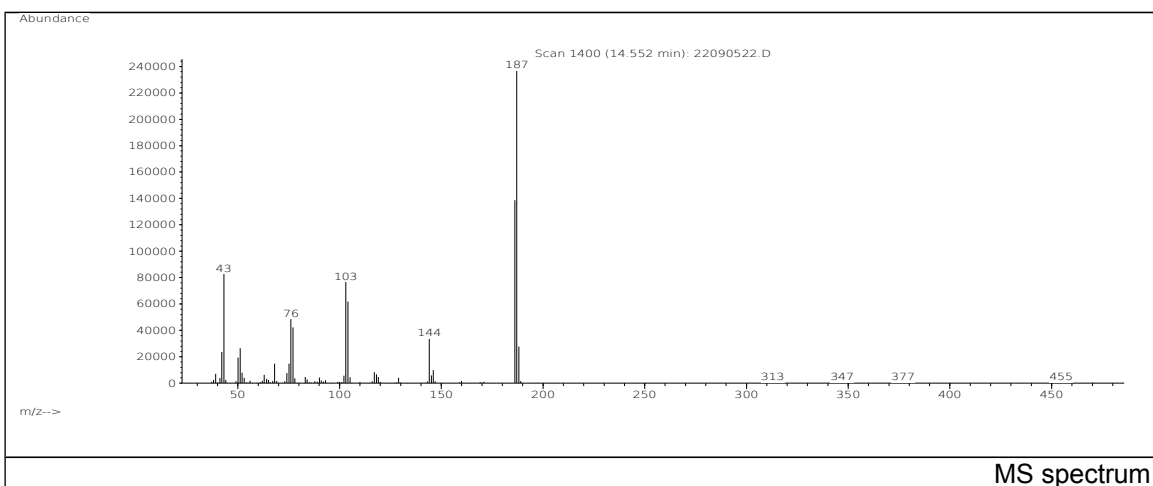
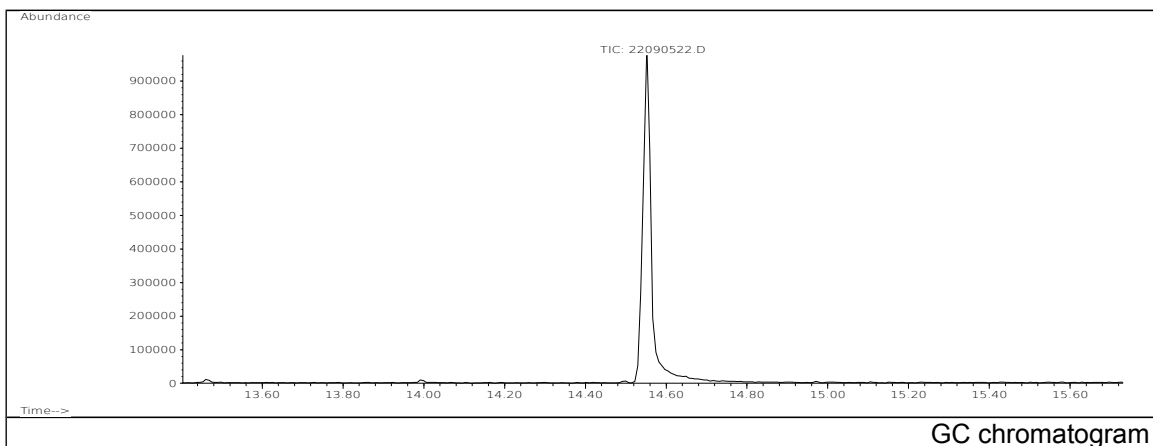


JRC CRL - FCM Database / GC-MS

Sample Name: Benzoguanamine
Solvent: Methanoll
Concentration: 100 µg/mL

Date: 22/09/2005
CAS: 000091-76-9
PM ref: 13075 [U.R.N. M144]



m/z	Abundance	Ion Intensity %	m/z	Abundance	Ion Intensity %
42.10	23752,0	9,67	103.10	76728,0	31,25
43.10	82832,0	33,73	104.10	61944,0	25,22
50.10	19368,0	7,89	144.10	33808,0	13,77
51.10	26552,0	10,81	146.00	9938,0	4,05
68.10	14845,0	6,05	186.10	138688,0	56,48
75.10	14874,0	6,06	187.10	245568,0	100,00
76.10	48552,0	19,77	188.10	27736,0	11,29
77.10	42256,0	17,21			

Spectrometer: HEWLETT PACKARD GC/MS 6890/5973
Inlet system: capillary GC/MS
Scan Range: 40-700 amu
Source temperature: 230 °C

Flow: 1.2 mL/min
Column: DB 17-HT (30 m x 0.25 mm x 0.15 µm)
Programme temperature: 40 °C (3 min); 20 °C/min
(350 °C); 350 °C (20 min)