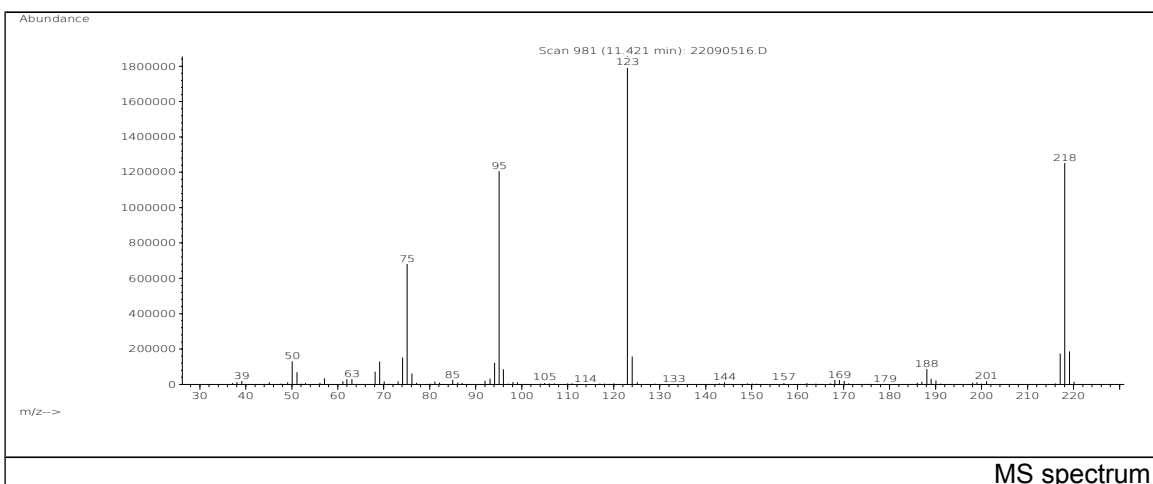
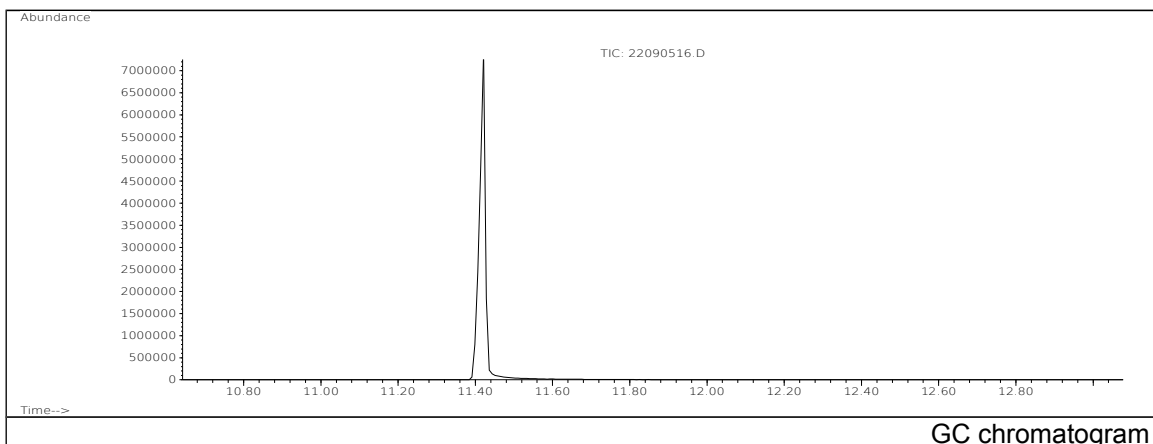


JRC CRL - FCM Database / GC-MS

Sample Name: 4,4'-Difluorobenzophenone
Solvent: Hexane
Concentration: 100 µg/mL

Date: 22/09/2005
CAS: 000345-92-6
PM ref: 15820 [U.R.N. A137]



m/z	Abundance	Ion Intensity %	m/z	Abundance	Ion Intensity %
50.10	131024,0	7,07	96.00	84952,0	4,58
51.10	68840,0	3,71	123.00	1854464,0	100,00
68.10	71976,0	3,88	124.00	158400,0	8,54
69.10	128784,0	6,94	188.10	87920,0	4,74
74.10	151488,0	8,17	217.10	174208,0	9,39
75.10	682560,0	36,81	218.10	1253376,0	67,59
94.10	122360,0	6,60	219.10	186240,0	10,04
95.10	1206784,0	65,07			

Spectrometer: HEWLETT PACKARD GC/MS 6890/5973
Inlet system: capillary GC/MS
Scan Range: 40-700 amu
Source temperature: 230 °C

Flow: 1.2 mL/min
Column: DB 17-HT (30 m x 0.25 mm x 0.15 µm)
Programme temperature: 40 °C (3 min); 20 °C/min
(350 °C); 350 °C (20 min)