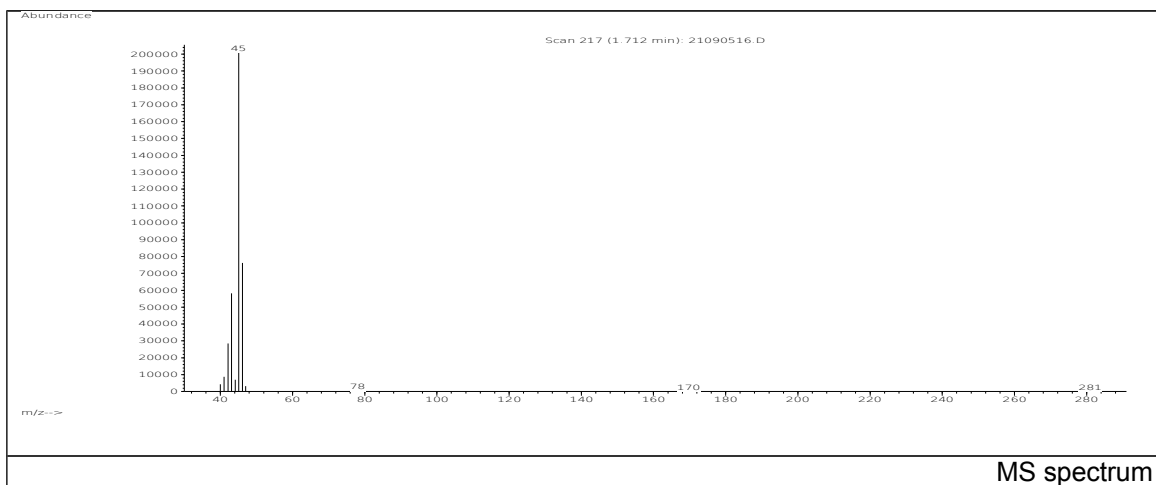


JRC CRL - FCM Database / GC-MS

Sample Name: Ethanol
Solvent: -
Concentration: -

Date: 21/09/2005
CAS: 000064-17-5
PM ref: 16780 [U.R.N. M111]



m/z	Abundance	Ion Intensity %	m/z	Abundance	Ion Intensity %
40.00	4313,0	2,10	48.10	218,0	0,11
41.00	8753,0	4,26	78.00	262,0	0,13
42.10	28544,0	13,89	169.80	168,0	0,08
43.10	58216,0	28,32	281.00	178,0	0,09
44.10	6944,0	3,38	0.0	0,0	0,00
45.10	205568,0	100,00	0.0	0,0	0,00
46.10	76240,0	37,09	0.0	0,0	0,00
47.00	3193,0	1,55	0.0	0,0	

Spectrometer: HEWLETT PACKARD GC/MS 6890/5973
Inlet system: capillary GC/MS
Scan Range: 40-700 amu
Source temperature: 230 °C

Flow: 1.2 mL/min
Column: DB 17-HT (30 m x 0.25 mm x 0.15 µm)
Programme temperature: 40 °C (3 min); 20 °C/min
(350 °C); 350 °C (20 min)