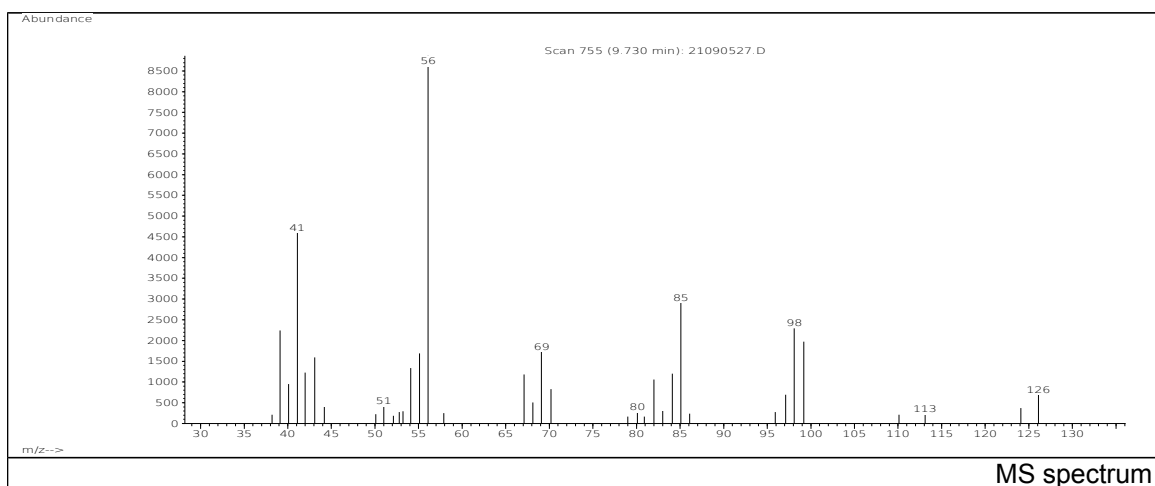
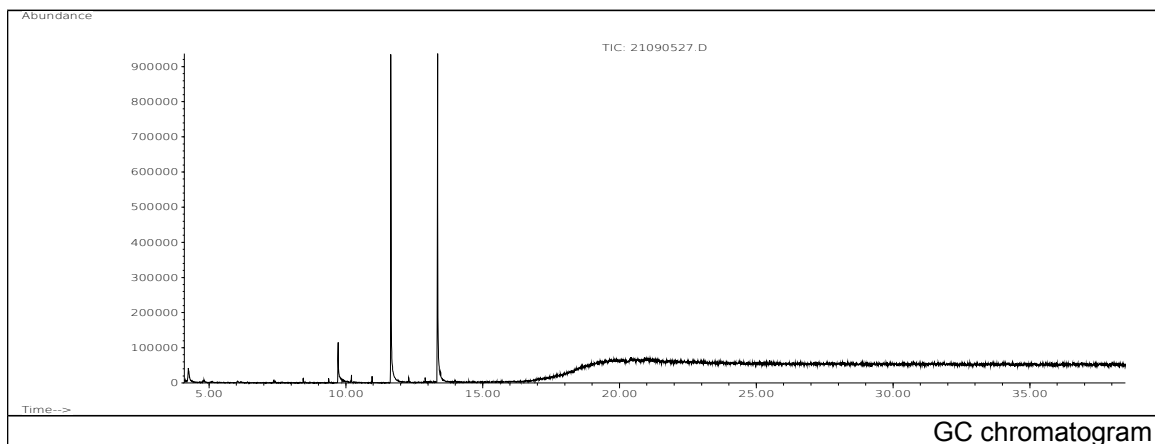


JRC CRL - FCM Database / GC-MS

Sample Name: Hexamethylene diisocyanate
Solvent: Ethanol
Concentration: 100 µg/mL

Date: 21/09/2005
CAS: 000822-06-0
PM ref: 18640 [U.R.N. A110]

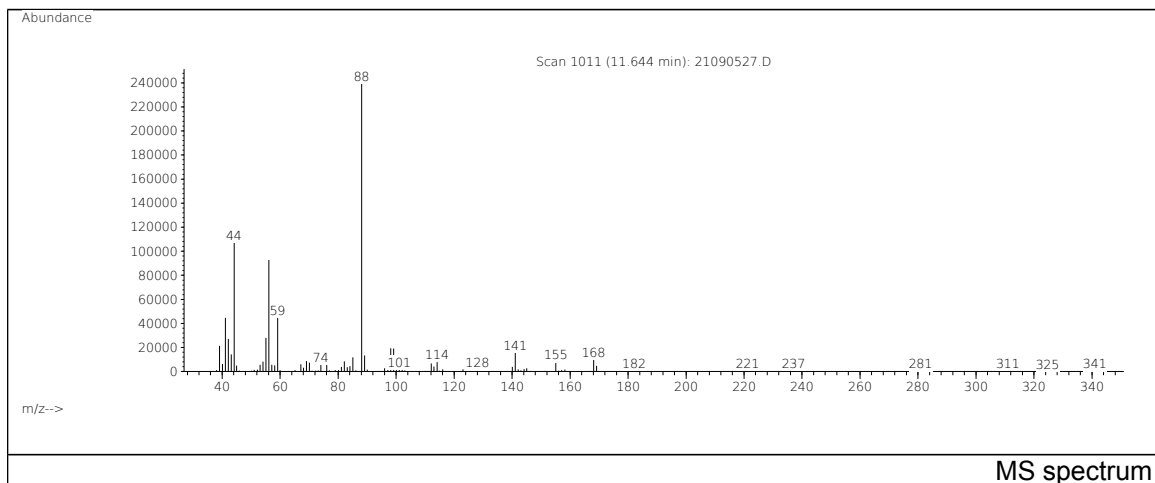


m/z	Abundance	Ion Intensity %	m/z	Abundance	Ion Intensity %
39.10	4206,0	16,45	67.10	3407,0	13,32
40.10	2263,0	8,85	69.10	5209,0	20,37
41.10	14773,0	57,76	84.10	2556,0	9,99
42.10	3775,0	14,76	85.10	7427,0	29,04
43.10	6188,0	24,19	97.10	2174,0	8,50
54.10	2850,0	11,14	98.10	5990,0	23,42
55.10	3583,0	14,01	99.10	5667,0	22,16
56.10	25576,0	100,00			

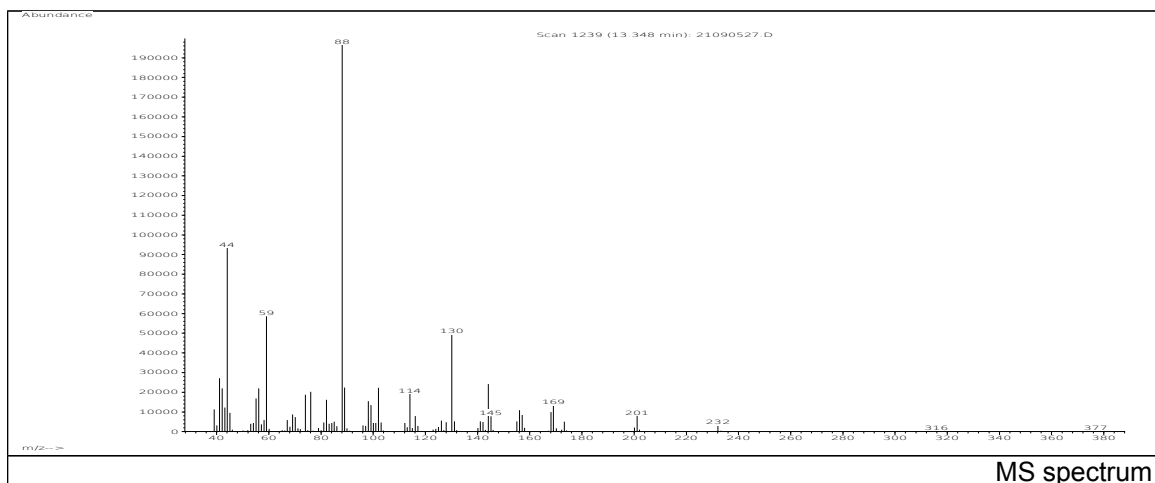
Spectrometer: HEWLETT PACKARD GC/MS 6890/5973
Inlet system: capillary GC/MS
Scan Range: 40-700 amu
Source temperature: 230 °C

Flow: 1.2 mL/min
Column: DB 17-HT (30 m x 0.25 mm x 0.15 µm)
Programme temperature: 40 °C (3 min); 20 °C/min
(350 °C); 350 °C (20 min)

JRC CRL - FCM Database / GC-MS



m/z	Abundance	Ion Intensity %	m/z	Abundance	Ion Intensity %
39.10	21464,0	8,53	85.10	11914,0	4,74
41.10	44632,0	17,74	88.10	251520,0	100,00
42.10	27184,0	10,81	89.10	13417,0	5,33
43.10	14219,0	5,65	98.10	19264,0	7,66
44.10	106944,0	42,52	99.10	19192,0	7,63
55.10	28072,0	11,16	141.10	15618,0	6,21
56.10	92696,0	36,85	168.10	9950,0	3,96
59.10	44840,0	17,83			



m/z	Abundance	Ion Intensity %	m/z	Abundance	Ion Intensity %
41.10	27088,0	10,77	82.10	16252,0	6,46
42.10	22024,0	8,76	88.10	199872,0	79,47
44.10	93272,0	37,08	89.00	22464,0	8,93
55.10	16872,0	6,71	102.00	22248,0	8,85
56.10	22048,0	8,77	114.10	19144,0	7,61
59.10	58600,0	23,30	130.10	49384,0	19,63
74.00	18736,0	7,45	144.10	24248,0	9,64
76.10	20184,0	8,02			

Spectrometer: HEWLETT PACKARD GC/MS 6890/5973
 Inlet system: capillary GC/MS
 Scan Range: 40-700 amu
 Source temperature: 230 °C

Flow: 1.2 mL/min
 Column: DB 17-HT (30 m x 0.25 mm x 0.15 µm)
 Programme temperature: 40 °C (3 min); 20 °C/min
 (350 °C); 350 °C (20 min)