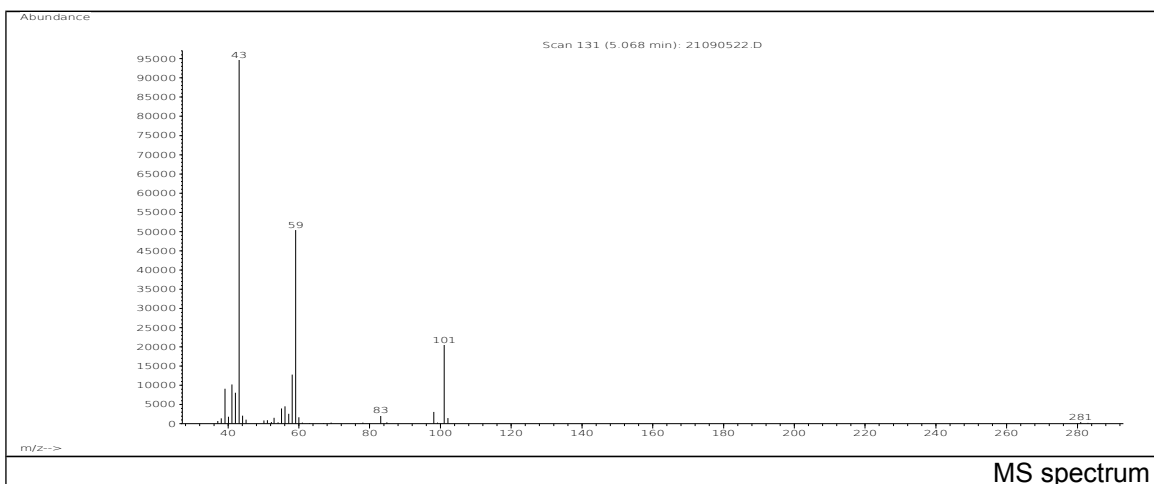
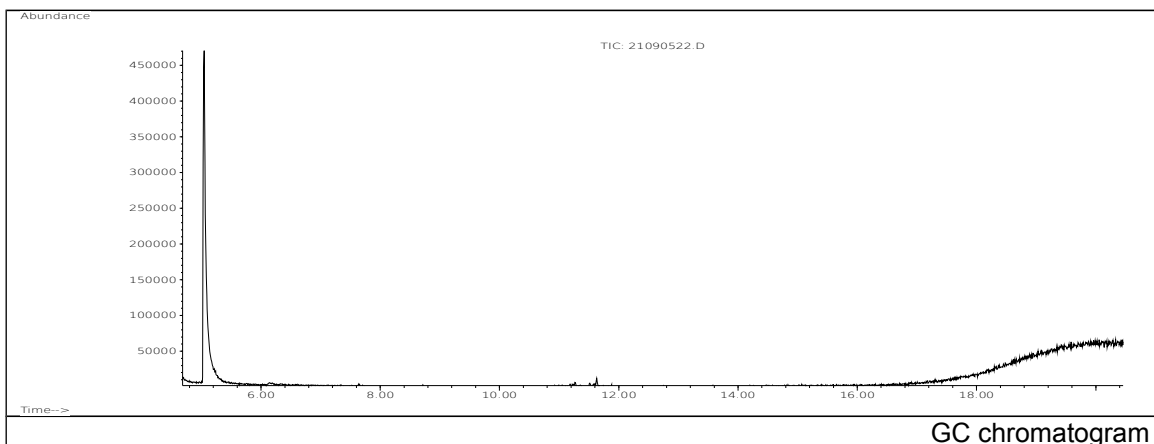


JRC CRL - FCM Database / GC-MS

Sample Name: Sorbitol
Solvent: Ethanol
Concentration: 100 µg/mL

Date: 21/09/2005
CAS: 000050-70-4
PM ref: 24490 [U.R.N. A103]



m/z	Abundance	Ion Intensity %	m/z	Abundance	Ion Intensity %
38.10	2797,0	1,48	57.10	4309,0	2,28
39.10	18128,0	9,59	58.10	24016,0	12,70
41.10	21480,0	11,36	59.10	96712,0	51,14
42.10	14957,0	7,91	60.10	3543,0	1,87
43.10	189120,0	100,00	83.10	5154,0	2,73
44.00	5280,0	2,79	98.10	6867,0	3,63
55.10	5671,0	3,00	101.10	41120,0	21,74
56.10	10161,0	5,37			

Spectrometer: HEWLETT PACKARD GC/MS 6890/5973
Inlet system: capillary GC/MS
Scan Range: 40-700 amu
Source temperature: 230 °C

Flow: 1.2 mL/min
Column: DB 17-HT (30 m x 0.25 mm x 0.15 µm)
Programme temperature: 40 °C (3 min); 20 °C/min
(350 °C); 350 °C (20 min)