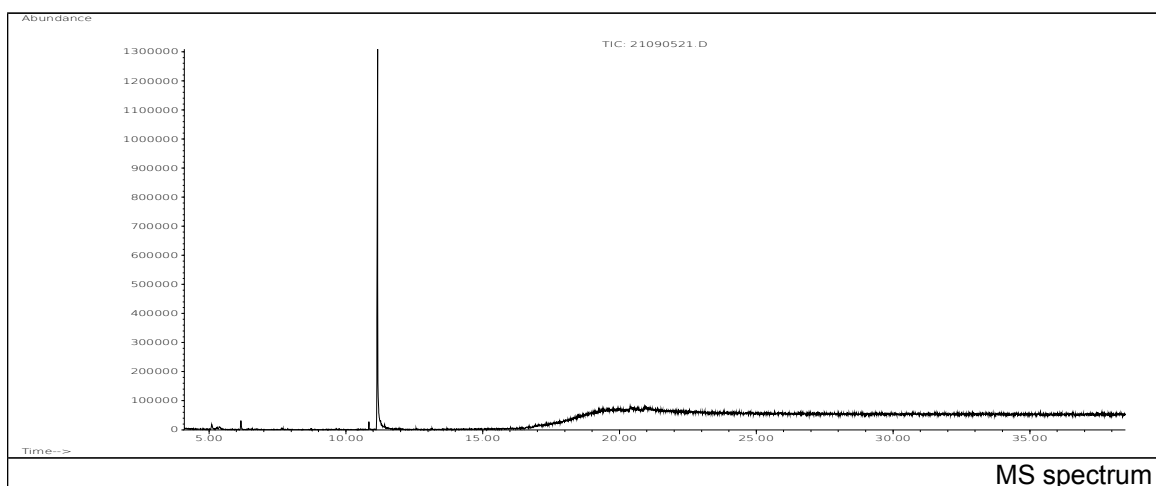
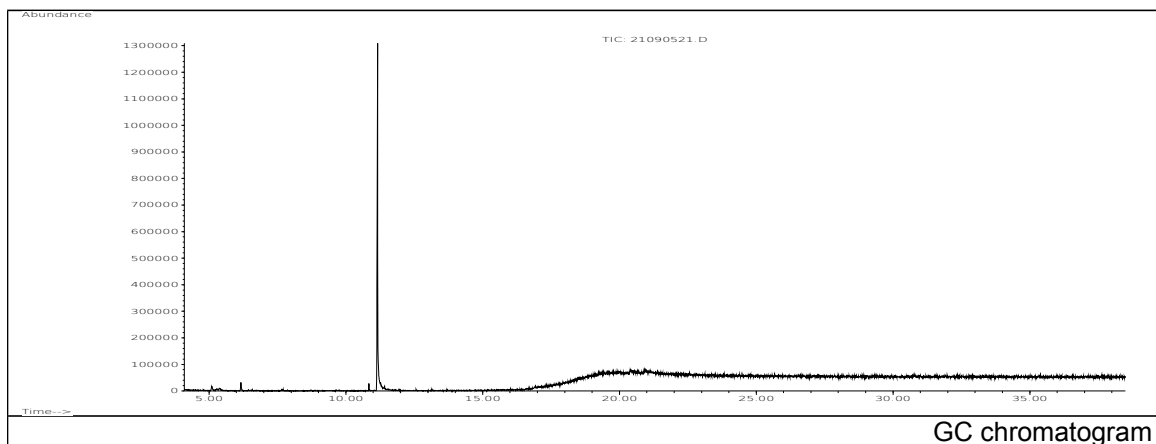


JRC CRL - FCM Database / GC-MS

Sample Name: Tetraethyleneglycol
Solvent: Ethanol
Concentration: 100 µg/mL

Date: 21/09/2005
CAS: 000112-60-7
PM ref: 25090 [U.R.N. A102]



m/z	Abundance	Ion Intensity %	m/z	Abundance	Ion Intensity %
42.10	12197,0	2,63	73.10	11484,0	2,48
43.10	69864,0	15,07	75.10	20704,0	4,47
44.10	53152,0	11,46	87.10	42552,0	9,18
45.10	463616,0	100,00	88.10	32776,0	7,07
46.10	10793,0	2,33	89.10	108080,0	23,31
57.10	7647,0	1,65	90.10	9471,0	2,04
58.10	37264,0	8,04	119.10	11452,0	2,47
59.10	33464,0	7,22			

Spectrometer: HEWLETT PACKARD GC/MS 6890/5973
Inlet system: capillary GC/MS
Scan Range: 40-700 amu
Source temperature: 230 °C

Flow: 1.2 mL/min
Column: DB 17-HT (30 m x 0.25 mm x 0.15 µm)
Programme temperature: 40 °C (3 min); 20 °C/min
(350 °C); 350 °C (20 min)