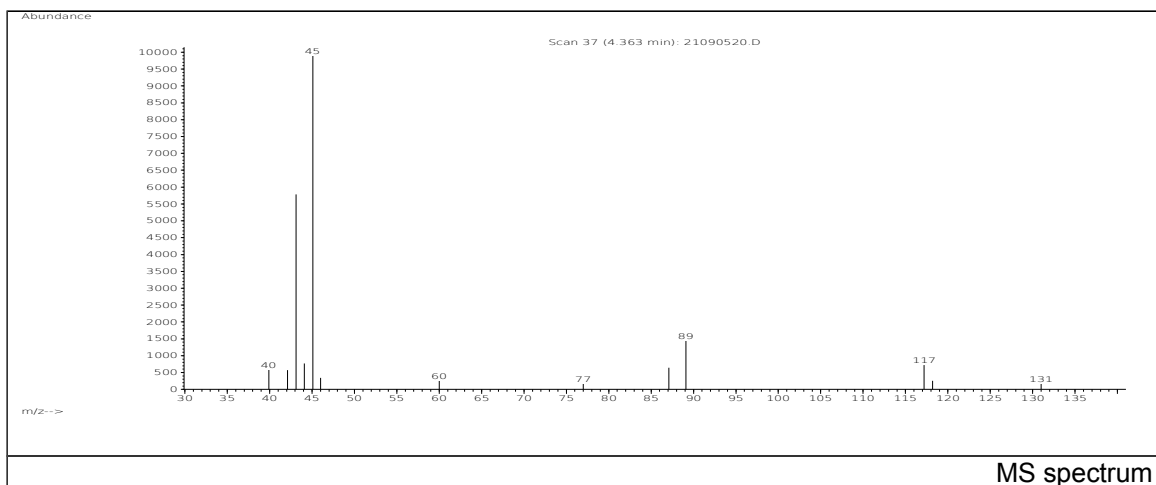


# JRC CRL - FCM Database / GC-MS

Sample Name: Acetaldehyde  
Solvent: Ethanol  
Concentration: 100 µg/mL

Date: 20/09/2005  
CAS: 000075-07-0  
PM ref: 10060 [U.R.N. M0102]



m/z	Abundance	Ion Intensity %	m/z	Abundance	Ion Intensity %
40.10	620,0	3,54	88.00	163,0	0,93
41.00	320,0	1,83	89.10	2177,0	12,43
42.10	1160,0	6,62	93.80	160,0	0,91
43.10	10963,0	62,57	117.00	1656,0	9,45
44.00	1290,0	7,36	131.20	479,0	2,73
45.10	17520,0	100,00	282.00	158,0	0,90
46.00	482,0	2,75	88.00	163,0	0,93
87.10	1313,0	7,49			

Spectrometer: HEWLETT PACKARD GC/MS 6890/5973  
Inlet system: capillary GC/MS  
Scan Range: 40-700 amu  
Source temperature: 230 °C

Flow: 1.2 mL/min  
Column: DB 17-HT (30 m x 0.25 mm x 0.15 µm)  
Programme temperature: 40 °C (3 min); 20 °C/min  
(350 °C); 350 °C (20 min)