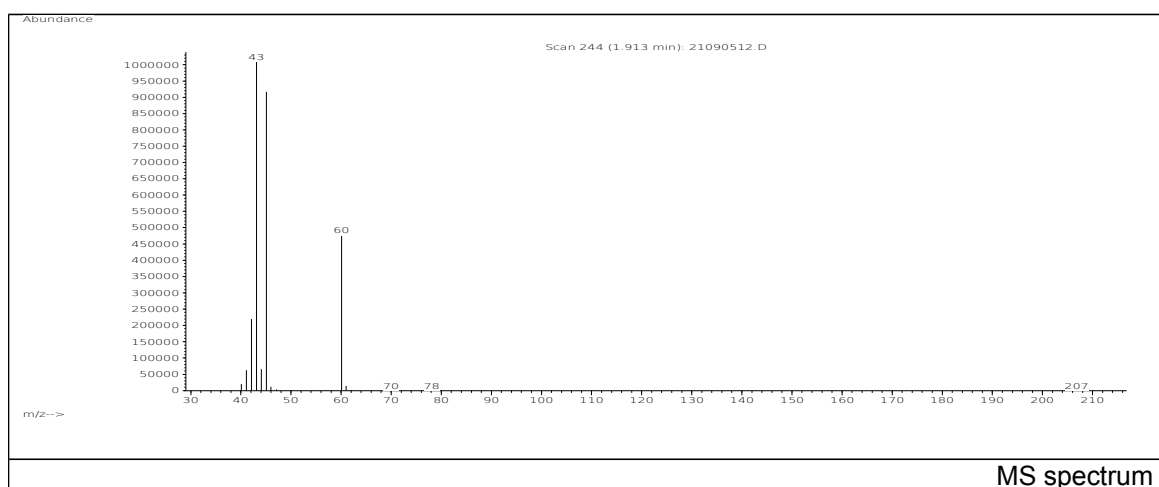
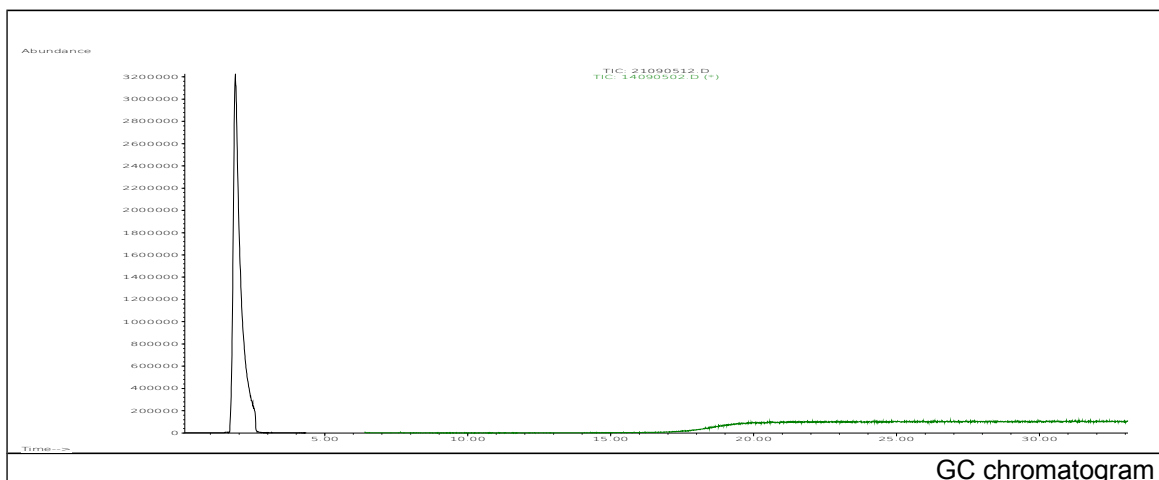


JRC CRL - FCM Database / GC-MS

Sample Name: Acetic acid
Solvent: -
Concentration: -

Date: 21/09/2005
CAS: 000064-19-7
PM ref: 10090 [U.R.N. M098]



m/z	Abundance	Ion Intensity %	m/z	Abundance	Ion Intensity %
40.00	21312,0	1,79	56.00	1574,0	0,13
41.10	73032,0	6,15	60.10	544128,0	45,83
42.10	247040,0	20,81	61.10	16055,0	1,35
43.10	1187328,0	100,00	62.00	2733,0	0,23
44.10	72720,0	6,12	76.90	316,0	0,03
45.10	1038656,0	87,48	77.90	636,0	0,05
46.00	13182,0	1,11	79.00	402,0	0,03
47.00	5806,0	0,49			

Spectrometer: HEWLETT PACKARD GC/MS 6890/5973
Inlet system: capillary GC/MS
Scan Range: 40-700 amu
Source temperature: 230 °C

Flow: 1.2 mL/min
Column: DB 17-HT (30 m x 0.25 mm x 0.15 µm)
Programme temperature: 40 °C (3 min); 20 °C/min
(350 °C); 350 °C (20 min)