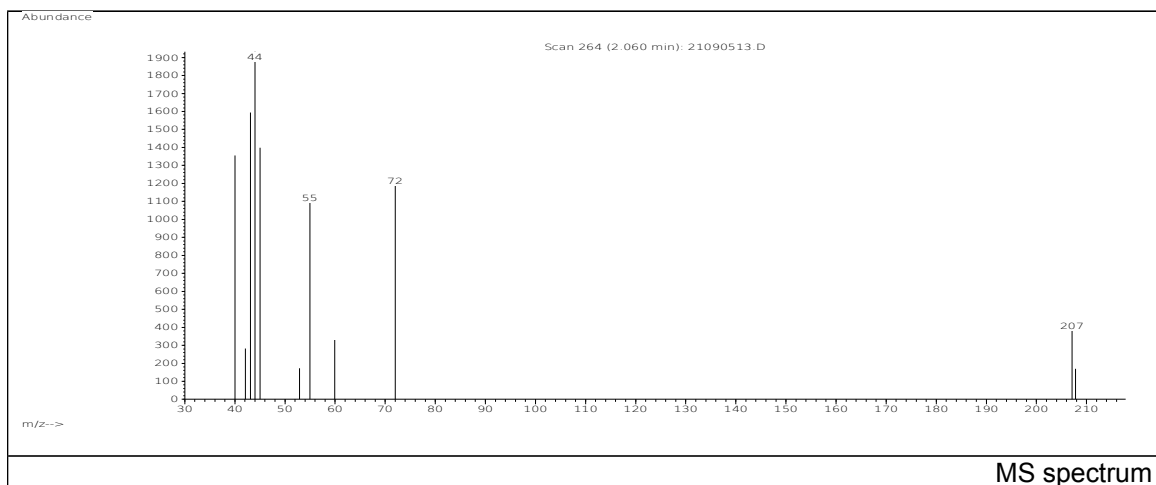


# JRC CRL - FCM Database / GC-MS

Sample Name: Acrylic acid  
Solvent: Ethanol  
Concentration: 100 µg/mL

Date: 21/09/2005  
CAS: 000079-10-7  
PM ref: 10690 [U.R.N. M097]



m/z	Abundance	Ion Intensity %	m/z	Abundance	Ion Intensity %
40.00	1205,0	73,93	73.00	151,0	9,26
42.10	374,0	22,94	206.90	220,0	13,50
43.00	1001,0	61,41	207.90	209,0	12,82
43.90	1630,0	100,00	252.70	174,0	10,67
45.10	1319,0	80,92	0.0	0,0	0,00
55.00	700,0	42,94	0.0	0,0	0,00
60.00	278,0	17,06	0.0	0,0	0,00
72.10	1061,0	65,09	0.0	0,0	

Spectrometer: HEWLETT PACKARD GC/MS 6890/5973  
Inlet system: capillary GC/MS  
Scan Range: 40-700 amu  
Source temperature: 230 °C

Flow: 1.2 mL/min  
Column: DB 17-HT (30 m x 0.25 mm x 0.15 µm)  
Programme temperature: 40 °C (3 min); 20 °C/min  
(350 °C); 350 °C (20 min)