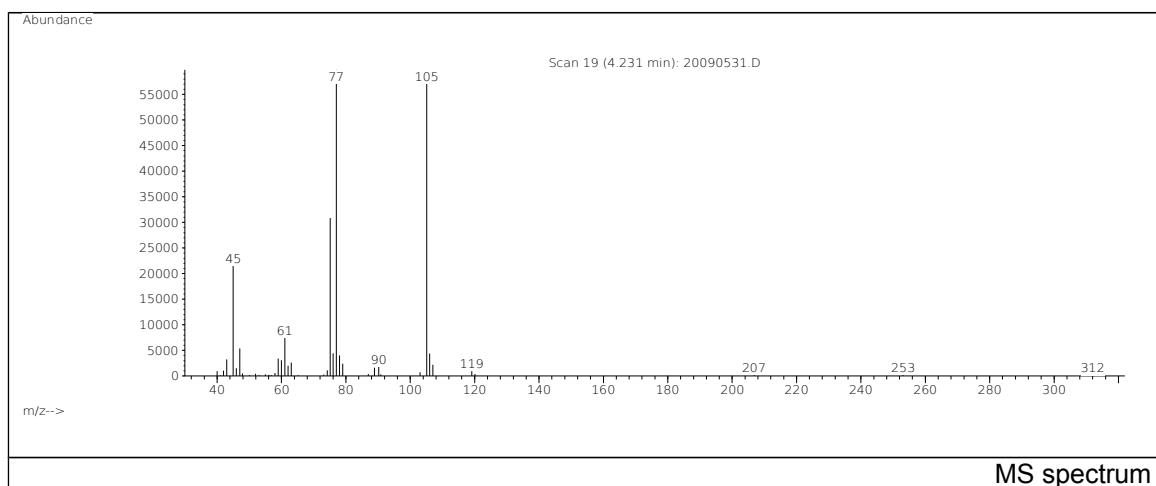
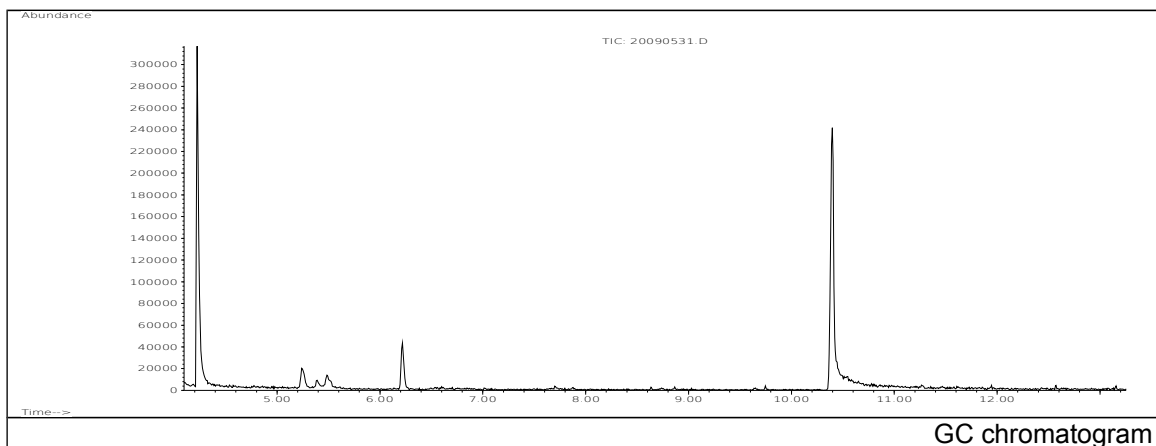


JRC CRL - FCM Database / GC-MS

Sample Name: Lauric acid
Solvent: Ethanol
Concentration: 100 µg/mL

Date: 20/09/2005
CAS: 000143-07-7
PM ref: 19470 [U.R.N. M093]

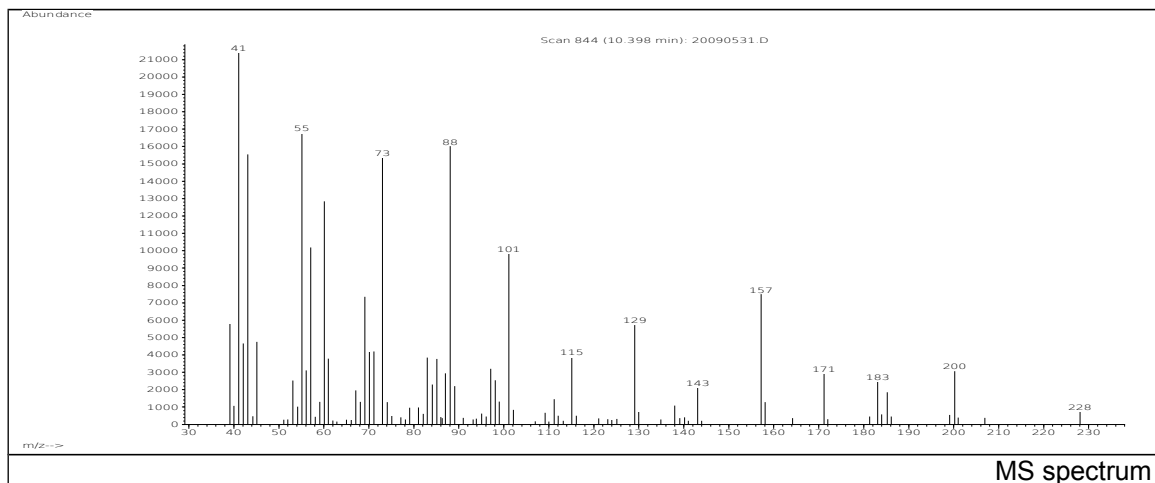


m/z	Abundance	Ion Intensity %	m/z	Abundance	Ion Intensity %
43.10	4161,0	5,09	76.10	5448,0	6,67
45.10	28640,0	35,04	77.00	81728,0	100,00
47.00	6767,0	8,28	78.00	6095,0	7,46
59.10	4793,0	5,86	79.00	3394,0	4,15
60.00	4300,0	5,26	105.10	76024,0	93,02
61.10	8585,0	10,50	106.10	8271,0	10,12
63.00	3805,0	4,66	107.10	3002,0	3,67
75.00	48160,0	58,93			

Spectrometer: HEWLETT PACKARD GC/MS 6890/5973
Inlet system: capillary GC/MS
Scan Range: 40-700 amu
Source temperature: 230 °C

Flow: 1.2 mL/min
Column: DB 17-HT (30 m x 0.25 mm x 0.15 µm)
Programme temperature: 40 °C (3 min); 20 °C/min
(350 °C); 350 °C (20 min)

JRC CRL - FCM Database / GC-MS



m/z	Abundance	Ion Intensity %	m/z	Abundance	Ion Intensity %
39.10	5785,0	7,08	69.10	7342,0	8,98
41.10	21880,0	26,77	71.10	4196,0	5,13
42.10	4667,0	5,71	73.00	15371,0	18,81
43.10	15551,0	19,03	88.10	16018,0	19,60
45.10	4751,0	5,81	101.10	9843,0	12,04
55.10	16760,0	20,51	129.10	5716,0	6,99
57.10	10184,0	12,46	157.20	7500,0	9,18
60.10	12839,0	15,71			

Spectrometer: HEWLETT PACKARD GC/MS 6890/5973
 Inlet system: capillary GC/MS
 Scan Range: 40-700 amu
 Source temperature: 230 °C

Flow: 1.2 mL/min
 Column: DB 17-HT (30 m x 0.25 mm x 0.15 µm)
 Programme temperature: 40 °C (3 min); 20 °C/min
 (350 °C); 350 °C (20 min)