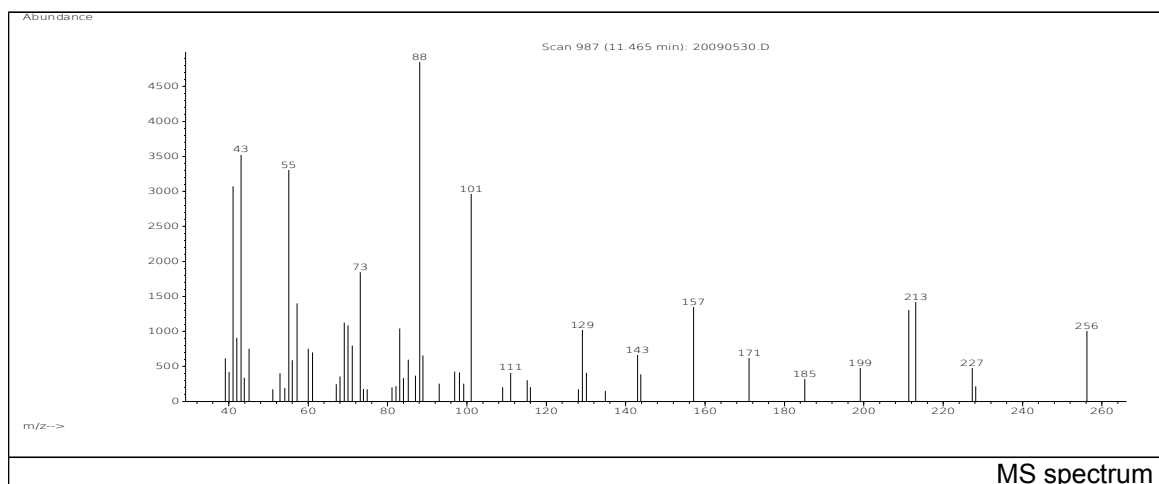
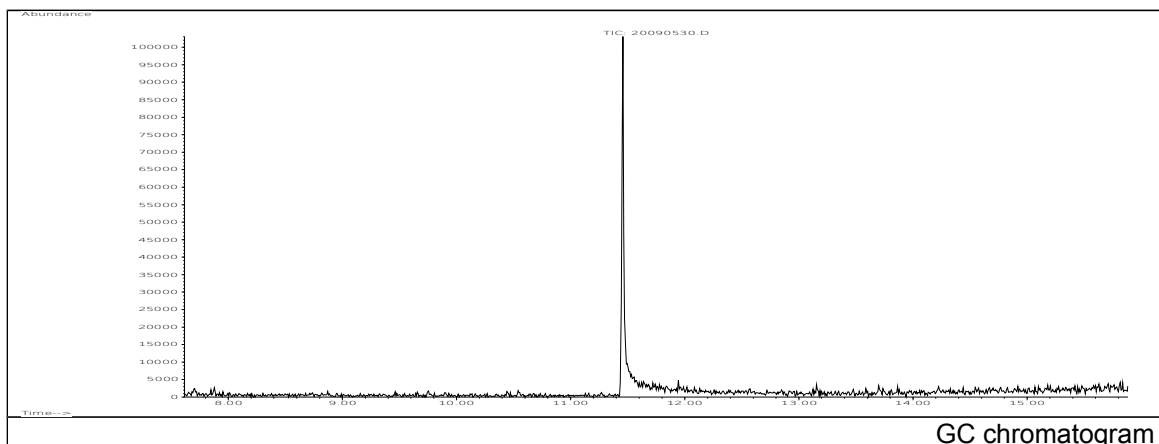


JRC CRL - FCM Database / GC-MS

Sample Name: Myristic acid
Solvent: Ethanol
Concentration: 100 µg/mL

Date: 20/09/2005
CAS: 000544-63-8
PM ref: 22350 [U.R.N. M092]



m/z	Abundance	Ion Intensity %	m/z	Abundance	Ion Intensity %
41.10	8235,0	65,71	73.10	3384,0	27,00
43.10	6847,0	54,63	83.10	2342,0	18,69
55.10	6094,0	48,62	88.10	12533,0	100,00
57.20	2914,0	23,25	89.20	2043,0	16,30
60.10	2639,0	21,06	101.10	7559,0	60,31
61.00	1914,0	15,27	157.20	3521,0	28,09
69.10	2587,0	20,64	213.20	2736,0	21,83
70.00	2482,0	19,80			

Spectrometer: HEWLETT PACKARD GC/MS 6890/5973
Inlet system: capillary GC/MS
Scan Range: 40-700 amu
Source temperature: 230 °C

Flow: 1.2 mL/min
Column: DB 17-HT (30 m x 0.25 mm x 0.15 µm)
Programme temperature: 40 °C (3 min); 20 °C/min
(350 °C); 350 °C (20 min)