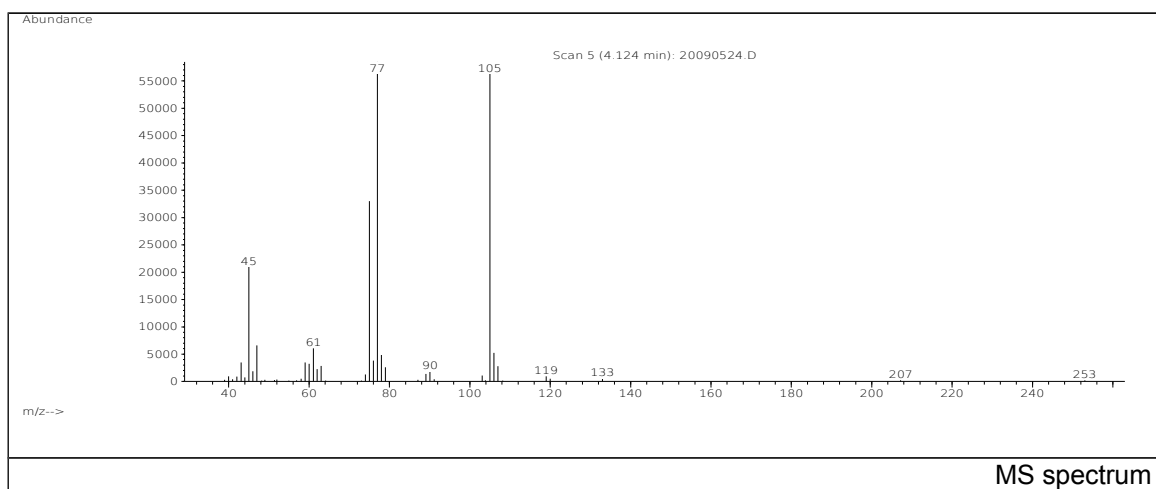
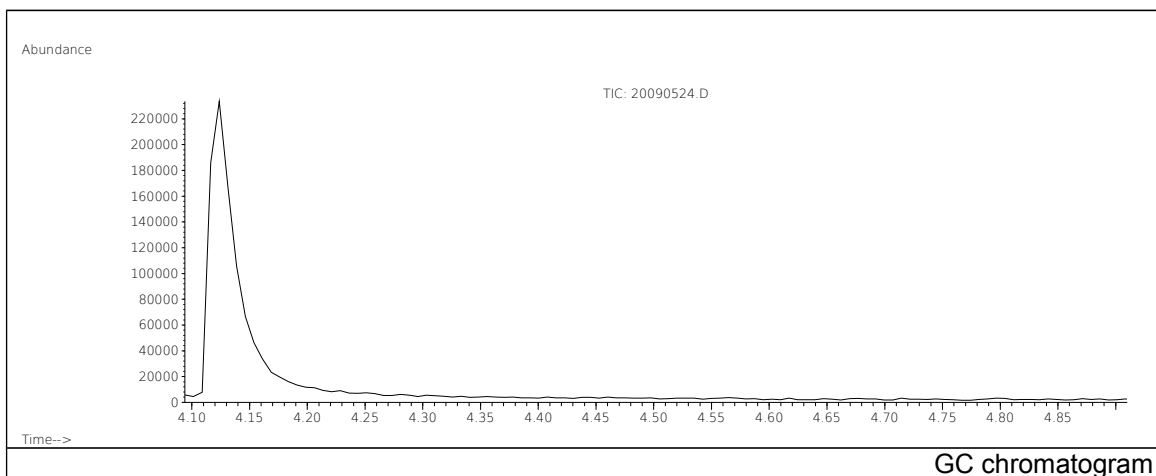


JRC CRL - FCM Database / GC-MS

Sample Name: Methacrylonitrile
Solvent: Ethanol
Concentration: 100 µg/mL

Date: 20/09/2005
CAS: 000126-98-7
PM ref: 21490 [U.R.N. M086]



m/z	Abundance	Ion Intensity %	m/z	Abundance	Ion Intensity %
43.10	3484,0	5,96	76.00	3823,0	6,54
45.00	20952,0	35,82	77.00	58488,0	100,00
47.00	6631,0	11,34	78.00	4863,0	8,31
59.00	3467,0	5,93	79.00	2598,0	4,44
60.00	3253,0	5,56	105.00	57000,0	97,46
61.10	6056,0	10,35	106.00	5264,0	9,00
63.00	2856,0	4,88	107.00	2807,0	4,80
75.00	32992,0	56,41			

Spectrometer: HEWLETT PACKARD GC/MS 6890/5973
Inlet system: capillary GC/MS
Scan Range: 40-700 amu
Source temperature: 230 °C

Flow: 1.2 mL/min
Column: DB 17-HT (30 m x 0.25 mm x 0.15 µm)
Programme temperature: 40 °C (3 min); 20 °C/min
(350 °C); 350 °C (20 min)