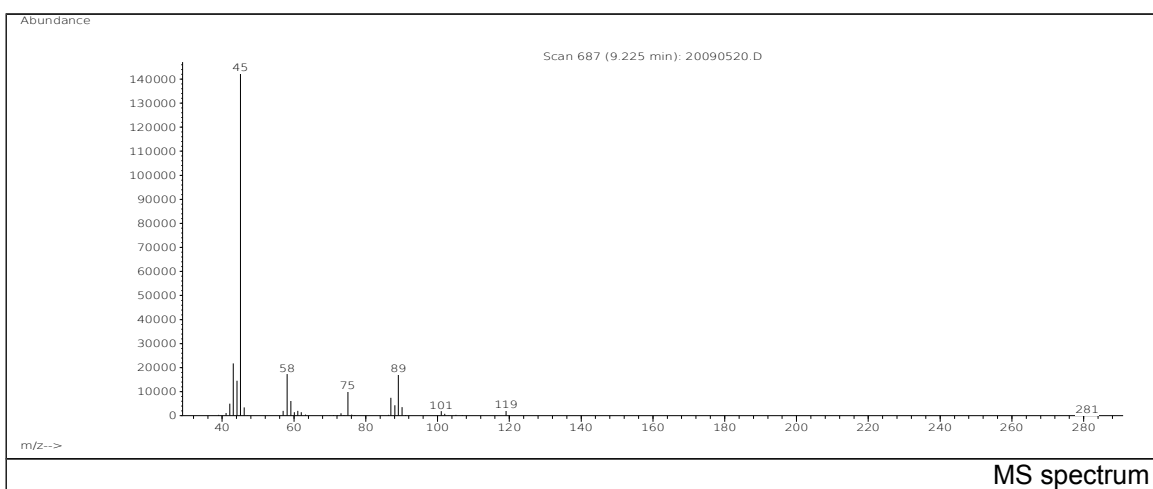
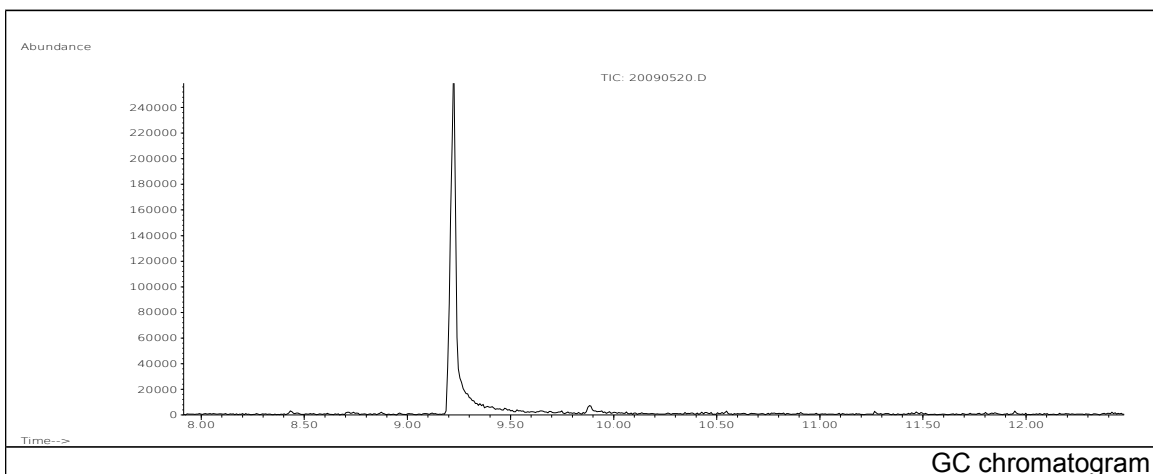


JRC CRL - FCM Database / GC-MS

Sample Name: Triethyleneglycol
Solvent: Ethanol
Concentration: 100 µg/mL

Date: 20/09/2005
CAS: 000112-27-6
PM ref: 25510 [U.R.N. M081]



m/z	Abundance	Ion Intensity %	m/z	Abundance	Ion Intensity %
42.10	3005,0	2,70	75.10	7626,0	6,86
43.10	17376,0	15,64	87.00	4440,0	4,00
44.10	10589,0	9,53	88.10	3665,0	3,30
45.10	111112,0	100,00	89.10	14679,0	13,21
46.10	3529,0	3,18	90.10	4052,0	3,65
57.10	1634,0	1,47	102.00	1495,0	1,35
58.10	13437,0	12,09	119.10	2100,0	1,89
59.10	5341,0	4,81			

Spectrometer: HEWLETT PACKARD GC/MS 6890/5973
Inlet system: capillary GC/MS
Scan Range: 40-700 amu
Source temperature: 230 °C

Flow: 1.2 mL/min
Column: DB 17-HT (30 m x 0.25 mm x 0.15 µm)
Programme temperature: 40 °C (3 min); 20 °C/min
(350 °C); 350 °C (20 min)