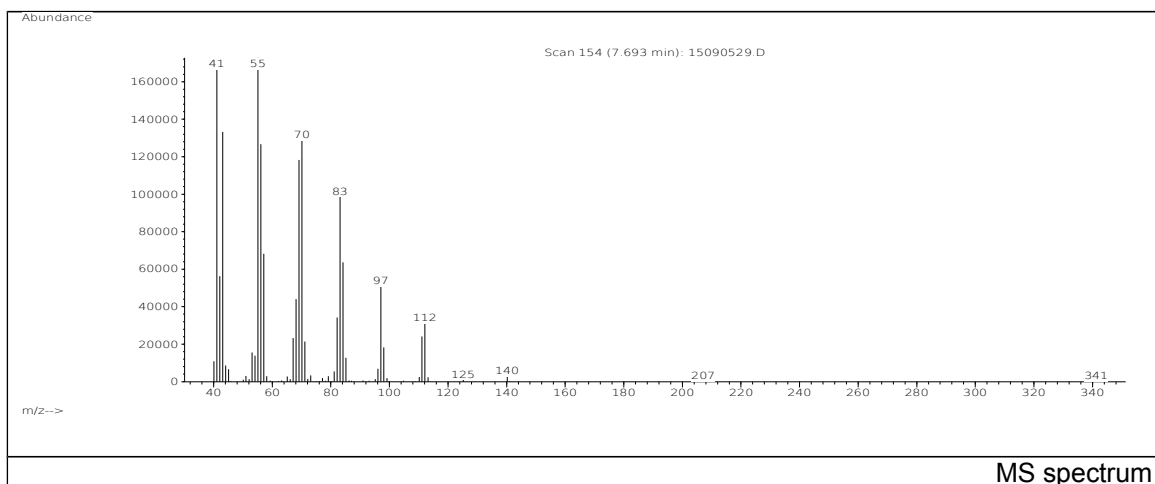
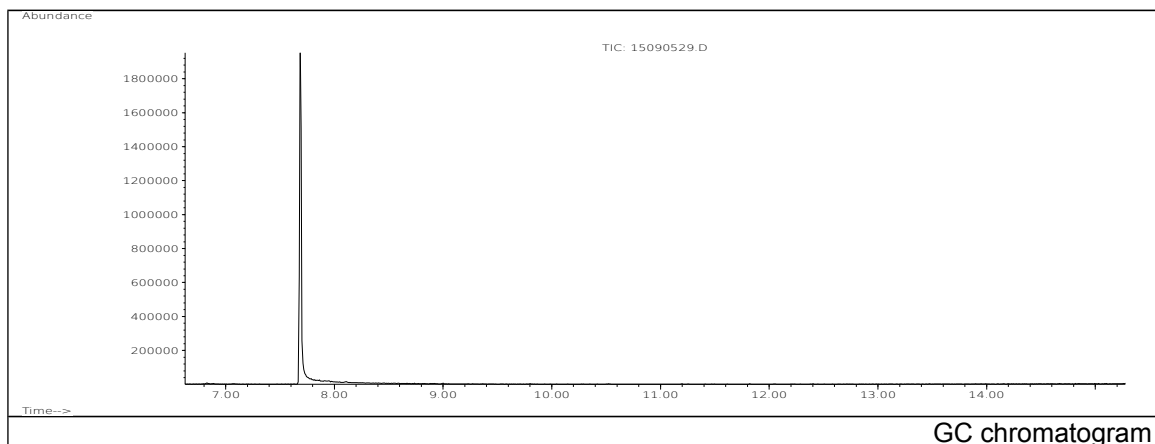


JRC CRL - FCM Database / GC-MS

Sample Name: 1-Decanol
Solvent: Methanol
Concentration: 100 µg/mL

Date: 15/09/2005
CAS: 000112-30-1
PM ref: 15100 [U.R.N. M069]



m/z	Abundance	Ion Intensity %	m/z	Abundance	Ion Intensity %
41.10	240384,0	100,00	70.10	175104,0	72,84
42.10	80512,0	33,49	71.10	32032,0	13,33
43.10	183744,0	76,44	82.10	44832,0	18,65
55.10	232512,0	96,73	83.10	125208,0	52,09
56.10	171712,0	71,43	84.10	78376,0	32,60
57.10	94208,0	39,19	97.10	63400,0	26,37
68.10	57064,0	23,74	112.10	36984,0	15,39
69.10	149440,0	62,17			

Spectrometer: HEWLETT PACKARD GC/MS 6890/5973
Inlet system: capillary GC/MS
Scan Range: 40-700 amu
Source temperature: 230 °C

Flow: 1.2 mL/min
Column: DB 17-HT (30 m x 0.25 mm x 0.15 µm)
Programme temperature: 40 °C (3 min); 20 °C/min
(350 °C); 350 °C (20 min)