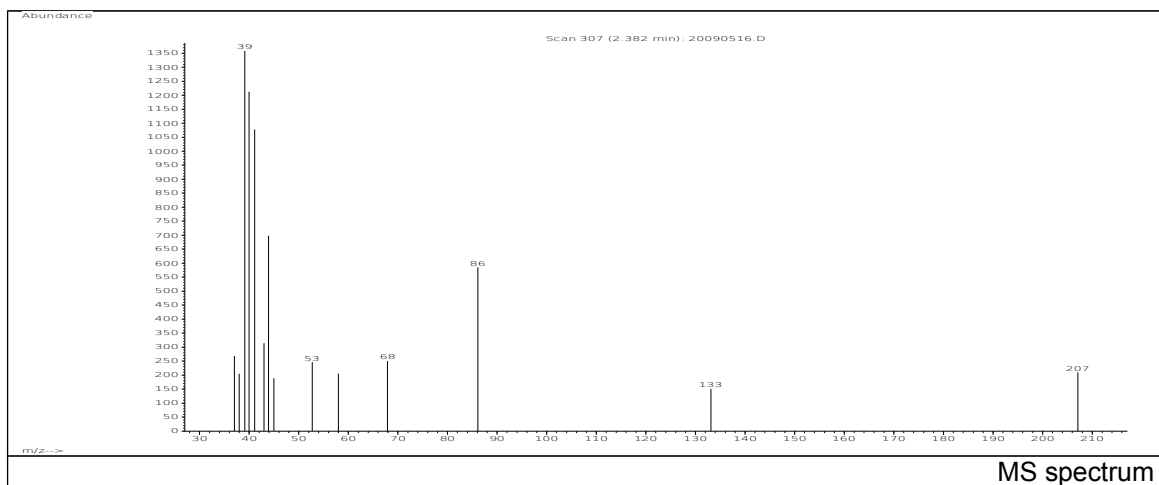


JRC CRL - FCM Database / GC-MS

Sample Name: Methacrylic acid
Solvent: -
Concentration: -

Date: 20/09/2005
CAS: 000079-41-4
PM ref: 20020 [U.R.N. A062]



m/z	Abundance	Ion Intensity %	m/z	Abundance	Ion Intensity %
37.20	186,0	15,84	45.00	172,0	14,65
37.90	174,0	14,82	58.10	161,0	13,71
39.10	1174,0	100,00	68.80	172,0	14,65
39.90	688,0	58,60	69.30	239,0	20,36
41.10	781,0	66,52	86.00	278,0	23,68
42.20	169,0	14,40	207.10	209,0	17,80
43.20	190,0	16,18	336.90	150,0	12,78
44.00	615,0	52,39			

Spectrometer: HEWLETT PACKARD GC/MS 6890/5973
Inlet system: capillary GC/MS
Scan Range: 40-700 amu
Source temperature: 230 °C

Flow: 1.2 mL/min
Column: DB 17-HT (30 m x 0.25 mm x 0.15 µm)
Programme temperature: 40 °C (3 min); 20 °C/min
(350 °C); 350 °C (20 min)