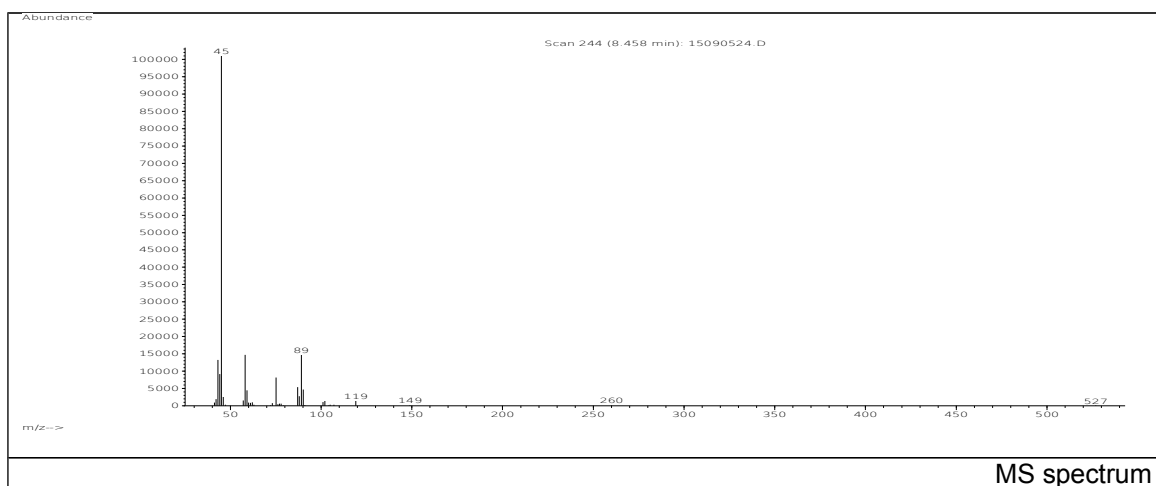
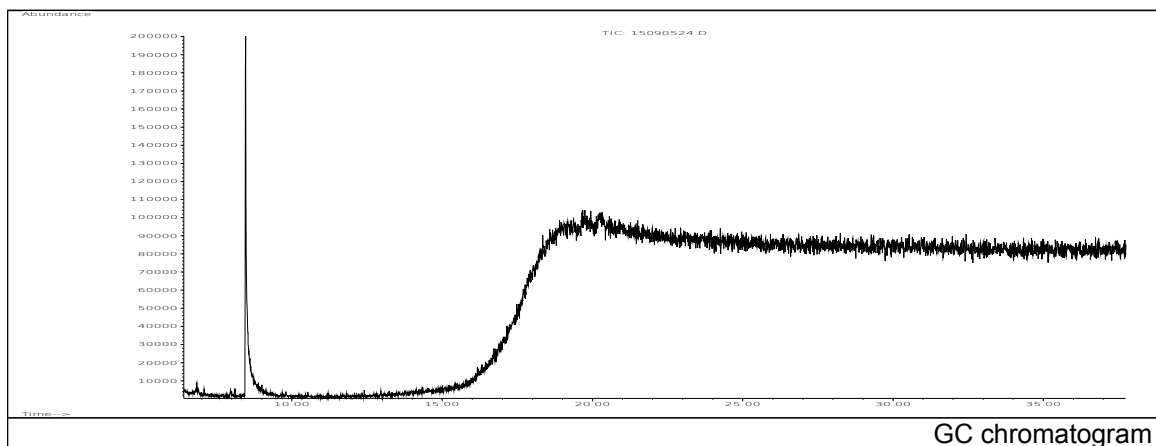


JRC CRL - FCM Database / GC-MS

Sample Name: Triethyleneglycol
Solvent: Ethanol
Concentration: 100 µg/mL

Date: 15/09/2005
CAS: 000112-27-6
PM ref: 25510 [U.R.N. M061]



m/z	Abundance	Ion Intensity %	m/z	Abundance	Ion Intensity %
42.10	1983,0	1,92	75.10	8223,0	7,95
43.10	13294,0	12,86	87.00	5433,0	5,25
44.10	9156,0	8,85	88.00	2762,0	2,67
45.10	103400,0	100,00	89.10	14878,0	14,39
46.10	2536,0	2,45	90.10	4680,0	4,53
57.10	1597,0	1,54	102.10	1402,0	1,36
58.10	14722,0	14,24	119.10	1439,0	1,39
59.10	4490,0	4,34			

Spectrometer: HEWLETT PACKARD GC/MS 6890/5973
Inlet system: capillary GC/MS
Scan Range: 40-700 amu
Source temperature: 230 °C

Flow: 1.2 mL/min
Column: DB 17-HT (30 m x 0.25 mm x 0.15 µm)
Programme temperature: 40 °C (3 min); 20 °C/min
(350 °C); 350 °C (20 min)