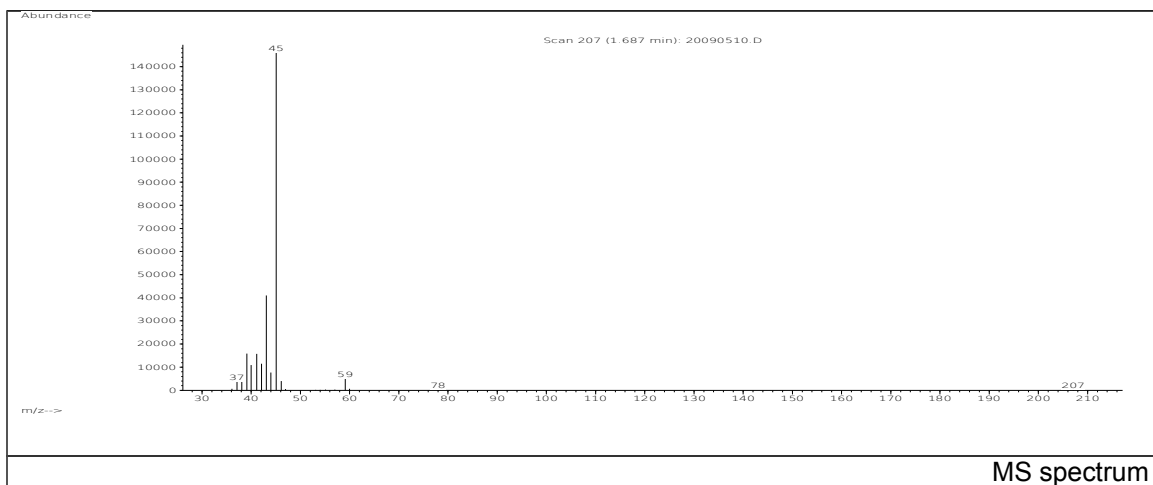


JRC CRL - FCM Database / GC-MS

Sample Name: 2-Propanol
Solvent: -
Concentration: -

Date: 20/09/2005
CAS: 000067-63-0
PM ref: 23830 [U.R.N. A058]



m/z	Abundance	Ion Intensity %	m/z	Abundance	Ion Intensity %
36.00	691,0	0,43	44.10	9821,0	6,17
37.10	4354,0	2,74	45.10	159168,0	100,00
38.10	6067,0	3,81	46.10	3976,0	2,50
39.10	21208,0	13,32	46.90	443,0	0,28
40.00	10706,0	6,73	57.00	531,0	0,33
41.10	18752,0	11,78	58.00	306,0	0,19
42.10	10157,0	6,38	59.10	5456,0	3,43
43.10	45600,0	28,65			

Spectrometer: HEWLETT PACKARD GC/MS 6890/5973
Inlet system: capillary GC/MS
Scan Range: 40-700 amu
Source temperature: 230 °C

Flow: 1.2 mL/min
Column: DB 17-HT (30 m x 0.25 mm x 0.15 µm)
Programme temperature: 40 °C (3 min); 20 °C/min
(350 °C); 350 °C (20 min)