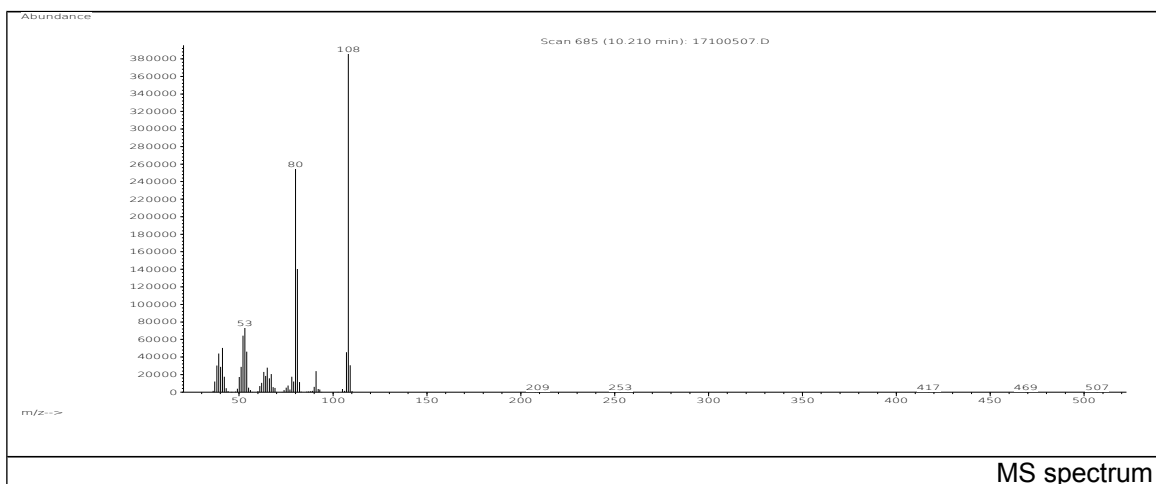
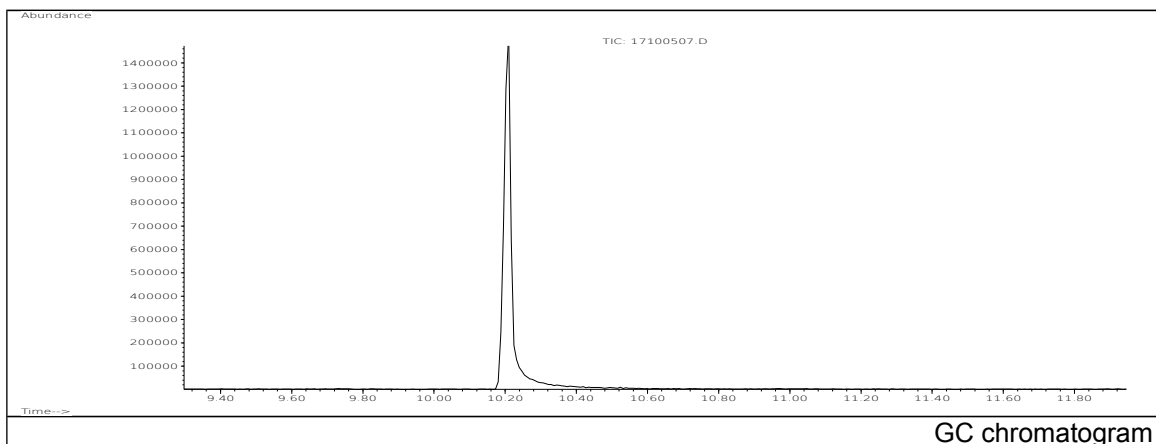


JRC CRL - FCM Database / GC-MS

Sample Name: 1,3-Phenylenediamine
Solvent: Ethanol
Concentration: 100 µg/mL

Date: 17/01/2005
CAS: 000108-45-2
PM ref: 23050 [U.R.N. M053]



m/z	Abundance	Ion Intensity %	m/z	Abundance	Ion Intensity %
38.10	30272,0	7,66	65.00	27776,0	7,02
39.10	43976,0	11,12	80.10	254400,0	64,34
40.10	28824,0	7,29	81.10	140416,0	35,51
41.10	50272,0	12,71	91.00	23896,0	6,04
51.10	28768,0	7,28	107.10	45480,0	11,50
52.10	64248,0	16,25	108.10	395392,0	100,00
53.10	73192,0	18,51	109.10	30496,0	7,71
54.10	46152,0	11,67			

Spectrometer: HEWLETT PACKARD GC/MS 6890/5973
Inlet system: capillary GC/MS
Scan Range: 40-700 amu
Source temperature: 230 °C

Flow: 1.2 mL/min
Column: DB 17-HT (30 m x 0.25 mm x 0.15 µm)
Programme temperature: 40 °C (3 min); 20 °C/min
(350 °C); 350 °C (20 min)