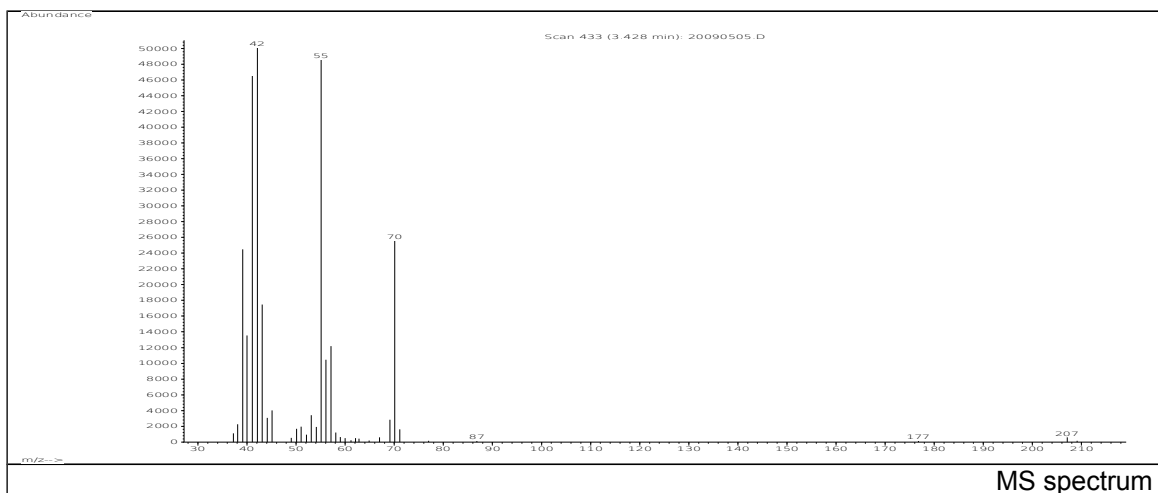


JRC CRL - FCM Database / GC-MS

Sample Name: 1-Pentanol
Solvent: Hexane
Concentration: 100 µg/mL

Date: 20/09/2005
CAS: 000071-41-0
PM ref: 22870 [U.R.N. A051]



m/z	Abundance	Ion Intensity %	m/z	Abundance	Ion Intensity %
38.10	2713,0	5,09	51.10	1858,0	3,49
39.10	24192,0	45,40	53.10	3119,0	5,85
40.00	11295,0	21,20	55.10	45320,0	85,05
41.10	48640,0	91,28	56.10	10134,0	19,02
42.10	53288,0	100,00	57.10	14336,0	26,90
43.10	15929,0	29,89	69.10	4443,0	8,34
44.10	3046,0	5,72	70.10	24320,0	45,64
45.10	3467,0	6,51			

Spectrometer: HEWLETT PACKARD GC/MS 6890/5973
Inlet system: capillary GC/MS
Scan Range: 40-700 amu
Source temperature: 230 °C

Flow: 1.2 mL/min
Column: DB 17-HT (30 m x 0.25 mm x 0.15 µm)
Programme temperature: 40 °C (3 min); 20 °C/min
(350 °C); 350 °C (20 min)