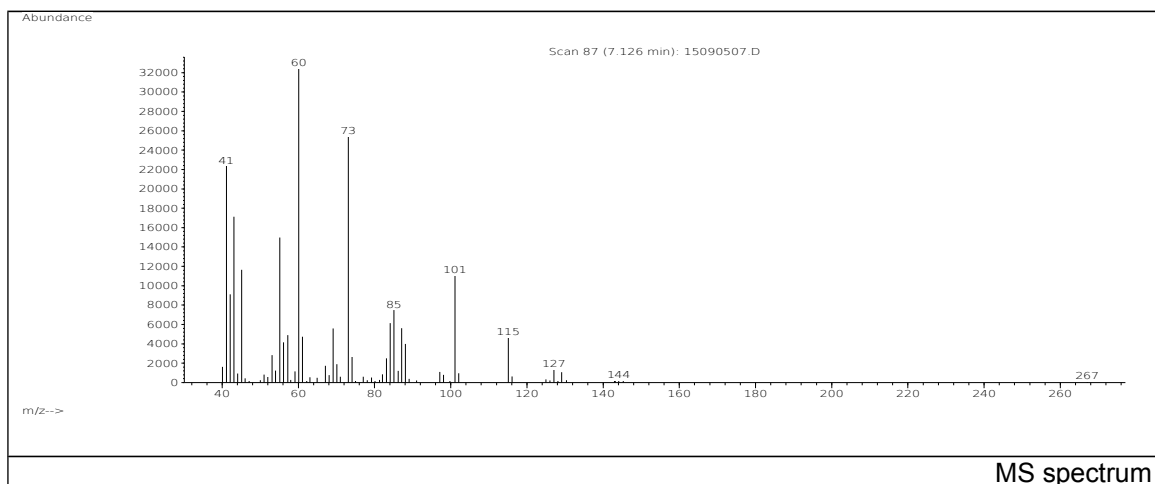
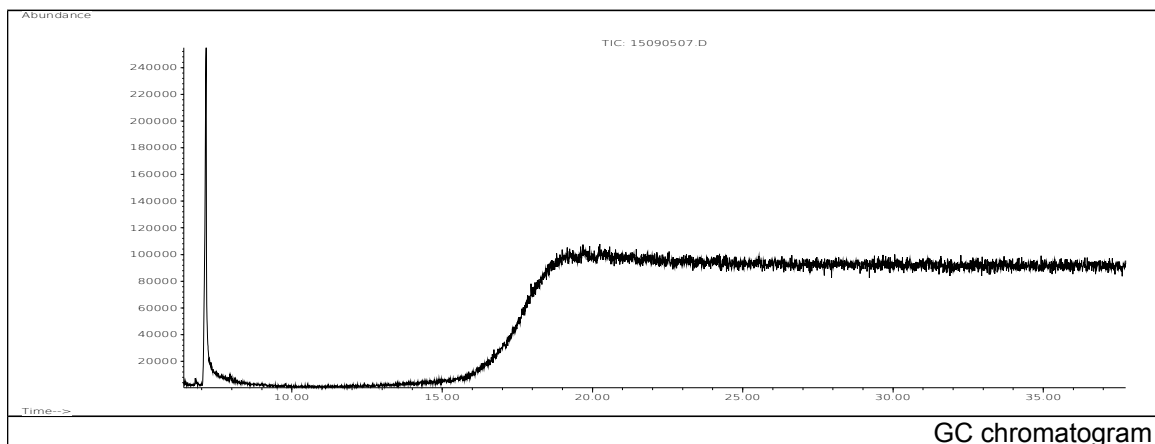


JRC CRL - FCM Database / GC-MS

Sample Name: Caprylic acid
Solvent: Methanoll
Concentration: 100 µg/mL

Date: 15/09/2005
CAS: 000124-07-2
PM ref: 14320 [U.R.N. M043]



m/z	Abundance	Ion Intensity %	m/z	Abundance	Ion Intensity %
41.10	22376,0	66,58	69.10	5587,0	16,62
42.10	9124,0	27,15	73.10	25400,0	75,58
43.10	17128,0	50,96	84.10	6141,0	18,27
45.10	11645,0	34,65	85.10	7500,0	22,32
55.10	14970,0	44,54	87.10	5625,0	16,74
57.20	4904,0	14,59	101.10	11060,0	32,91
60.10	33608,0	100,00	115.10	4664,0	13,88
61.10	4733,0	14,08			

Spectrometer: HEWLETT PACKARD GC/MS 6890/5973
Inlet system: capillary GC/MS
Scan Range: 40-700 amu
Source temperature: 230 °C

Flow: 1.2 mL/min
Column: DB 17-HT (30 m x 0.25 mm x 0.15 µm)
Programme temperature: 40 °C (3 min); 20 °C/min
(350 °C); 350 °C (20 min)