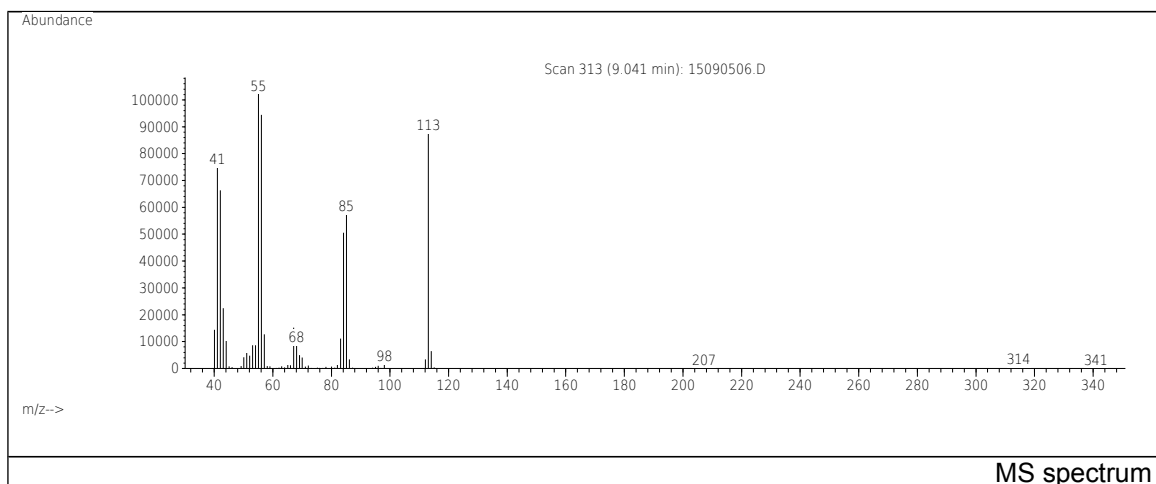
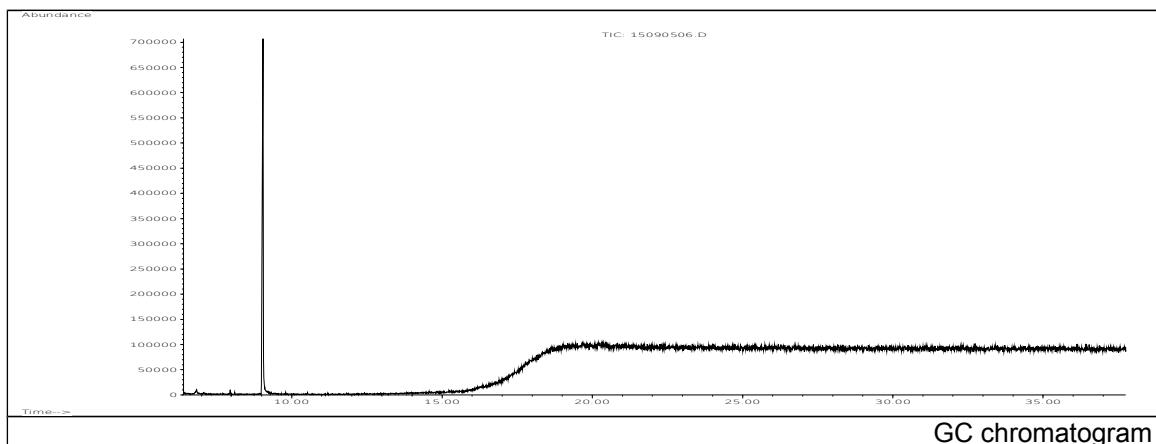


JRC CRL - FCM Database / GC-MS

Sample Name: Caprolactam
Solvent: Methanoll
Concentration: 100 µg/mL

Date: 15/09/2005
CAS: 000105-60-2
PM ref: 14200 [U.R.N. M042]

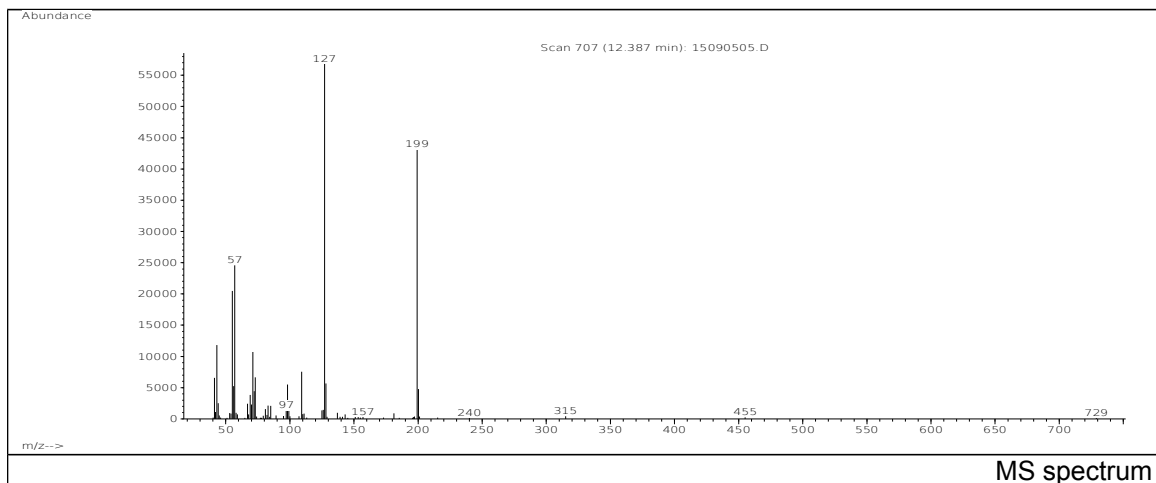


m/z	Abundance	Ion Intensity %	m/z	Abundance	Ion Intensity %
40.10	14366,0	13,26	56.10	94448,0	87,20
41.10	74744,0	69,01	57.10	12761,0	11,78
42.10	66320,0	61,23	67.10	15237,0	14,07
43.10	22408,0	20,69	83.10	11122,0	10,27
44.10	10202,0	9,42	84.10	50512,0	46,64
53.10	8659,0	7,99	85.10	57392,0	52,99
54.10	8701,0	8,03	113.10	87400,0	80,69
55.10	108312,0	100,00			

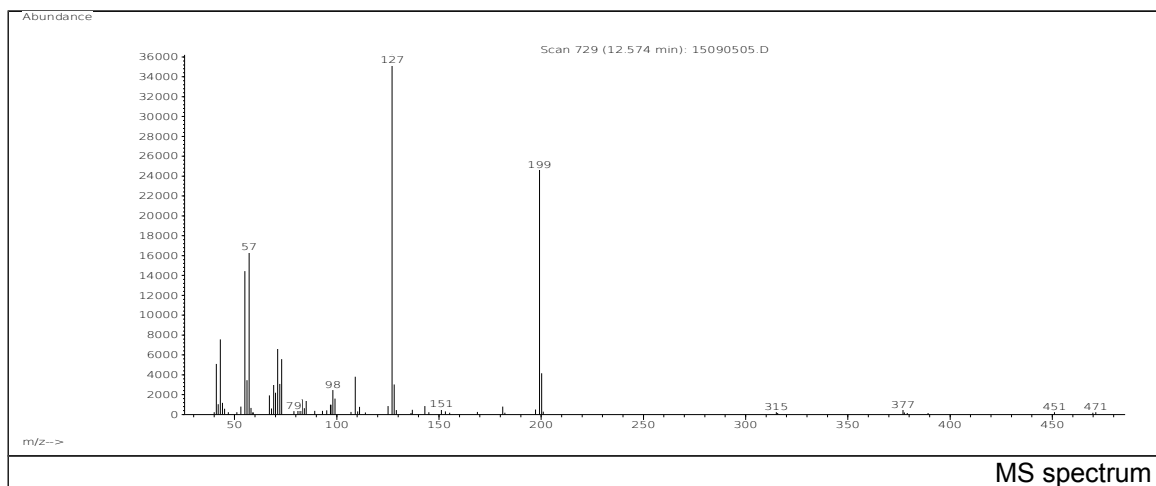
Spectrometer: HEWLETT PACKARD GC/MS 6890/5973
Inlet system: capillary GC/MS
Scan Range: 40-700 amu
Source temperature: 230 °C

Flow: 1.2 mL/min
Column: DB 17-HT (30 m x 0.25 mm x 0.15 µm)
Programme temperature: 40 °C (3 min); 20 °C/min
(350 °C); 350 °C (20 min)

JRC CRL - FCM Database / GC-MS



m/z	Abundance	Ion Intensity %	m/z	Abundance	Ion Intensity %
41.10	6581,0	6,08	73.10	6655,0	6,14
43.10	11829,0	10,92	98.10	5489,0	5,07
55.10	20472,0	18,90	109.10	7529,0	6,95
56.10	5224,0	4,82	127.10	58536,0	54,04
57.10	24568,0	22,68	128.10	5687,0	5,25
69.10	3826,0	3,53	199.20	43088,0	39,78
71.10	10717,0	9,89	200.20	4796,0	4,43
72.10	4425,0	4,09			

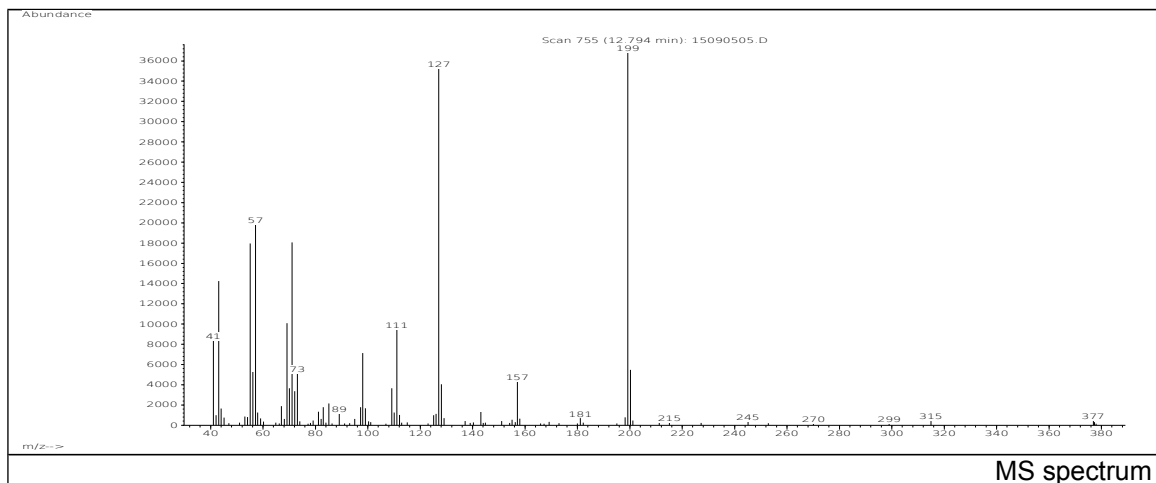


m/z	Abundance	Ion Intensity %	m/z	Abundance	Ion Intensity %
41.10	5104,0	4,71	73.10	5590,0	5,16
43.10	7558,0	6,98	98.10	2470,0	2,28
55.10	14437,0	13,33	109.10	3806,0	3,51
56.10	3462,0	3,20	127.10	36216,0	33,44
57.10	16315,0	15,06	128.10	3025,0	2,79
69.10	2967,0	2,74	199.20	24624,0	22,73
71.10	6590,0	6,08	200.20	4167,0	3,85
72.20	3085,0	2,85			

Spectrometer: HEWLETT PACKARD GC/MS 6890/5973
 Inlet system: capillary GC/MS
 Scan Range: 40-700 amu
 Source temperature: 230 °C

Flow: 1.2 mL/min
 Column: DB 17-HT (30 m x 0.25 mm x 0.15 µm)
 Programme temperature: 40 °C (3 min); 20 °C/min
 (350 °C); 350 °C (20 min)

JRC CRL - FCM Database / GC-MS



m/z	Abundance	Ion Intensity %	m/z	Abundance	Ion Intensity %
41.10	8346,0	7,71	98.10	7137,0	6,59
43.10	14263,0	13,17	111.10	9470,0	8,74
55.10	17968,0	16,59	127.10	35248,0	32,54
56.10	5274,0	4,87	128.10	4045,0	3,73
57.10	19816,0	18,30	157.10	4312,0	3,98
69.10	10096,0	9,32	199.20	37640,0	34,75
71.10	18080,0	16,69	200.20	5484,0	5,06
73.10	5124,0	4,73			

Spectrometer: HEWLETT PACKARD GC/MS 6890/5973
 Inlet system: capillary GC/MS
 Scan Range: 40-700 amu
 Source temperature: 230 °C

Flow: 1.2 mL/min
 Column: DB 17-HT (30 m x 0.25 mm x 0.15 µm)
 Programme temperature: 40 °C (3 min); 20 °C/min
 (350 °C); 350 °C (20 min)