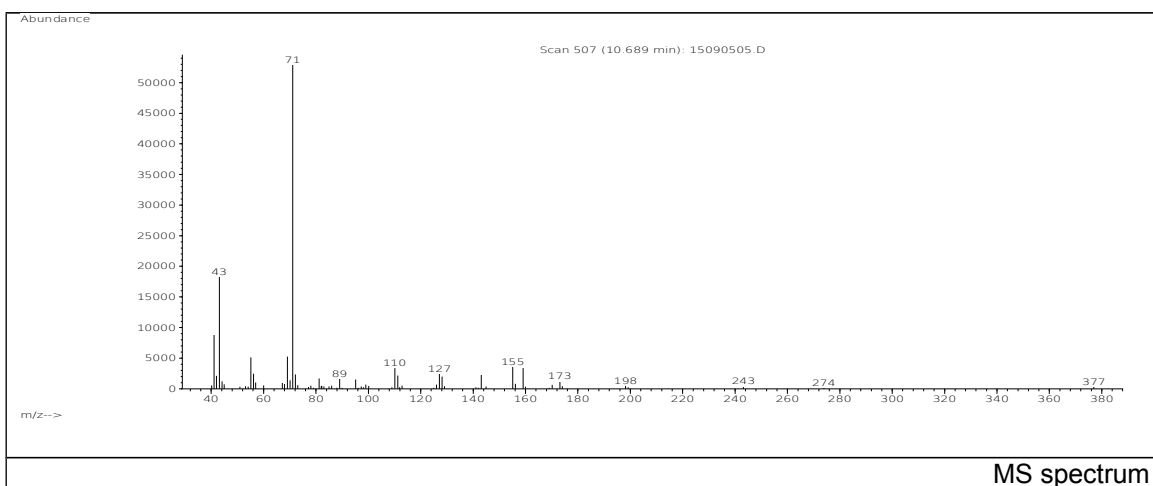
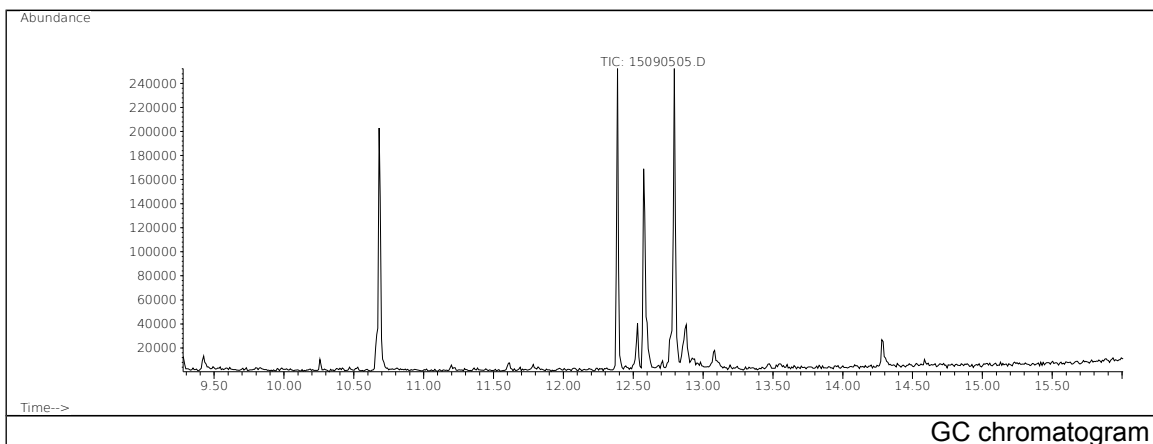


JRC CRL - FCM Database / GC-MS

Sample Name: Butyraldehyde
Solvent: Methanoll
Concentration: 100 µg/mL

Date: 15/09/2005
CAS: 000123-72-8
PM ref: 14110 [U.R.N. M041]

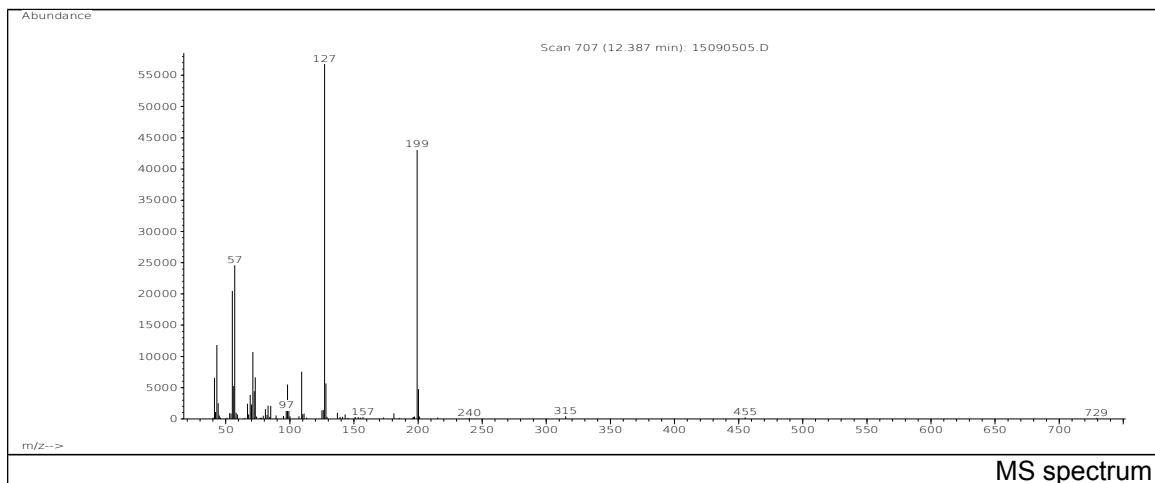


m/z	Abundance	Ion Intensity %	m/z	Abundance	Ion Intensity %
41.10	8792,0	16,12	110.10	3384,0	6,20
42.00	2108,0	3,86	111.20	2164,0	3,97
43.10	18280,0	33,51	127.10	2422,0	4,44
55.10	5107,0	9,36	128.10	1974,0	3,62
56.20	2458,0	4,51	143.10	2241,0	4,11
69.10	5241,0	9,61	155.10	3584,0	6,57
71.10	54552,0	100,00	159.10	3368,0	6,17
72.10	2350,0	4,31			

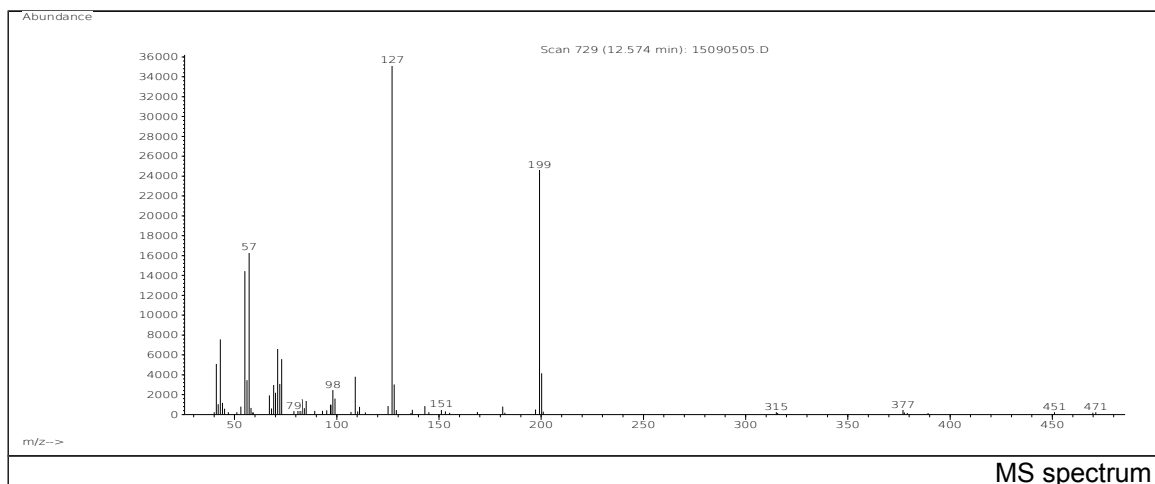
Spectrometer: HEWLETT PACKARD GC/MS 6890/5973
Inlet system: capillary GC/MS
Scan Range: 40-700 amu
Source temperature: 230 °C

Flow: 1.2 mL/min
Column: DB 17-HT (30 m x 0.25 mm x 0.15 µm)
Programme temperature: 40 °C (3 min); 20 °C/min
(350 °C); 350 °C (20 min)

JRC CRL - FCM Database / GC-MS



m/z	Abundance	Ion Intensity %	m/z	Abundance	Ion Intensity %
41.10	6581,0	11,24	73.10	6655,0	11,37
43.10	11829,0	20,21	98.10	5489,0	9,38
55.10	20472,0	34,97	109.10	7529,0	12,86
56.10	5224,0	8,92	127.10	58536,0	100,00
57.10	24568,0	41,97	128.10	5687,0	9,72
69.10	3826,0	6,54	199.20	43088,0	73,61
71.10	10717,0	18,31	200.20	4796,0	8,19
72.10	4425,0	7,56			

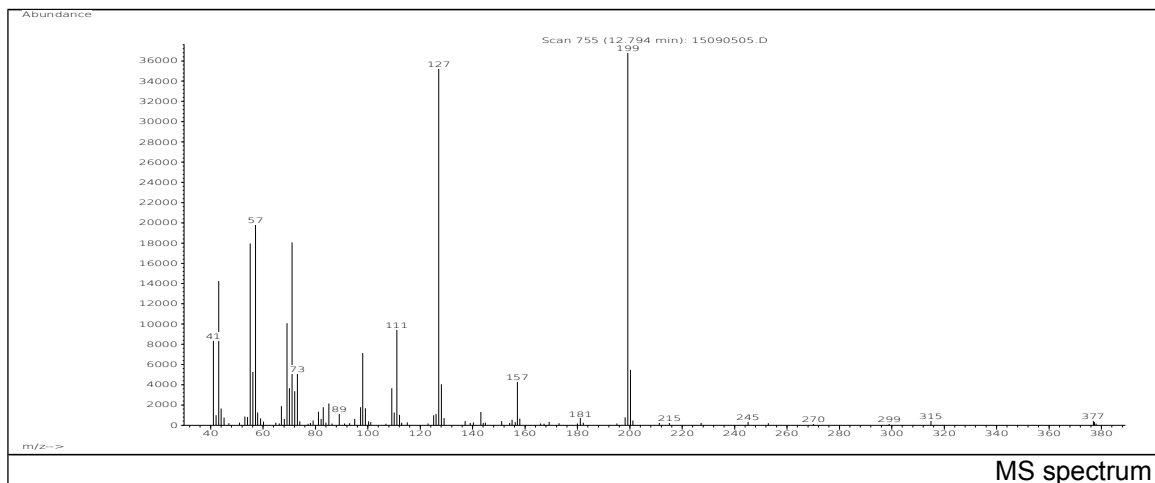


m/z	Abundance	Ion Intensity %	m/z	Abundance	Ion Intensity %
41.10	5104,0	8,72	73.10	5590,0	9,55
43.10	7558,0	12,91	98.10	2470,0	4,22
55.10	14437,0	24,66	109.10	3806,0	6,50
56.10	3462,0	5,91	127.10	36216,0	61,87
57.10	16315,0	27,87	128.10	3025,0	5,17
69.10	2967,0	5,07	199.20	24624,0	42,07
71.10	6590,0	11,26	200.20	4167,0	7,12
72.20	3085,0	5,27			

Spectrometer: HEWLETT PACKARD GC/MS 6890/5973
 Inlet system: capillary GC/MS
 Scan Range: 40-700 amu
 Source temperature: 230 °C

Flow: 1.2 mL/min
 Column: DB 17-HT (30 m x 0.25 mm x 0.15 µm)
 Programme temperature: 40 °C (3 min); 20 °C/min
 (350 °C); 350 °C (20 min)

JRC CRL - FCM Database / GC-MS



m/z	Abundance	Ion Intensity %	m/z	Abundance	Ion Intensity %
41.10	8346,0	14,26	98.10	7137,0	12,19
43.10	14263,0	24,37	111.10	9470,0	16,18
55.10	17968,0	30,70	127.10	35248,0	60,22
56.10	5274,0	9,01	128.10	4045,0	6,91
57.10	19816,0	33,85	157.10	4312,0	7,37
69.10	10096,0	17,25	199.20	37640,0	64,30
71.10	18080,0	30,89	200.20	5484,0	9,37
73.10	5124,0	8,75			

Spectrometer: HEWLETT PACKARD GC/MS 6890/5973
 Inlet system: capillary GC/MS
 Scan Range: 40-700 amu
 Source temperature: 230 °C

Flow: 1.2 mL/min
 Column: DB 17-HT (30 m x 0.25 mm x 0.15 µm)
 Programme temperature: 40 °C (3 min); 20 °C/min
 (350 °C); 350 °C (20 min)