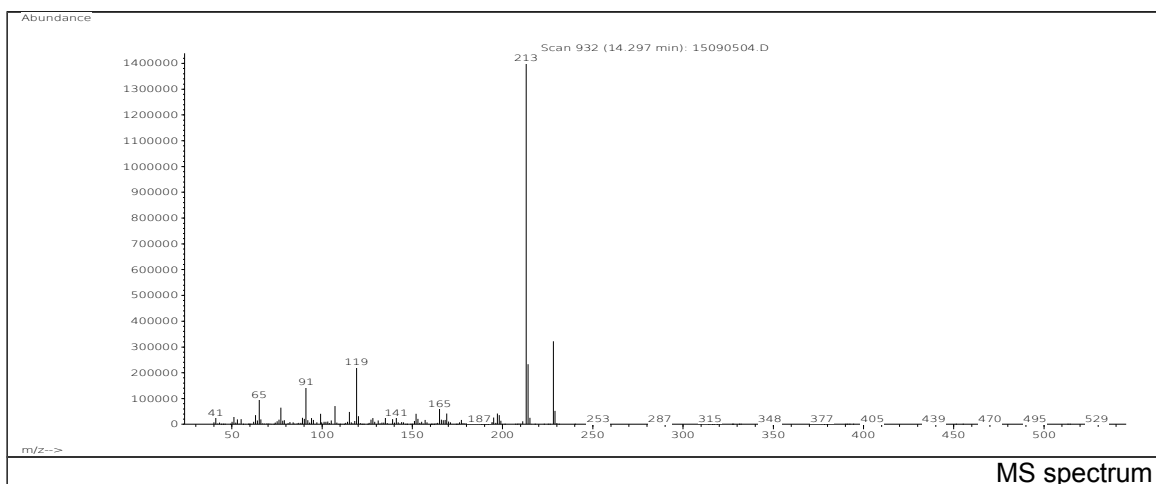
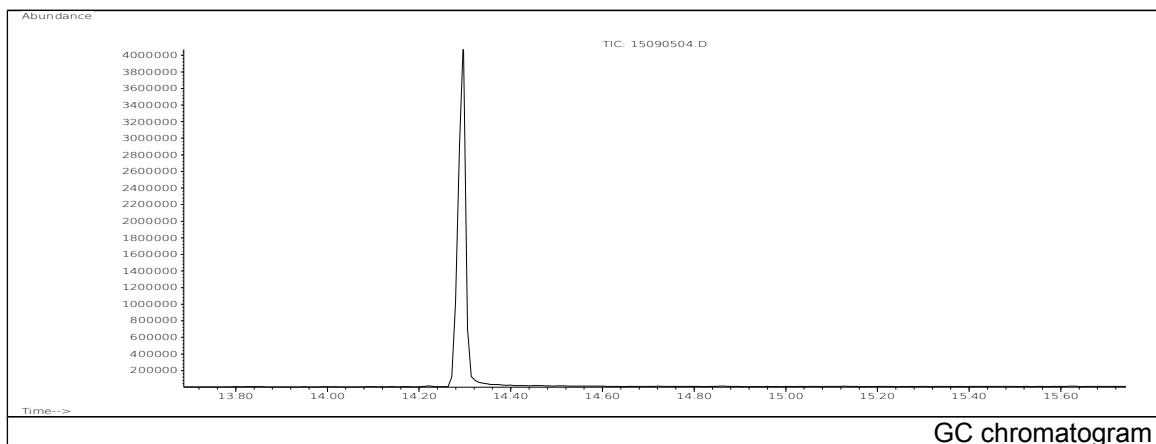


JRC CRL - FCM Database / GC-MS

Sample Name: 2,2-Bis(4-hydroxyphenyl) propane
Solvent: Ethanol
Concentration: 100 µg/mL

Date: 15/09/2005
CAS: 000080-05-7
PM ref: 13480 [U.R.N. M040]



m/z	Abundance	Ion Intensity %	m/z	Abundance	Ion Intensity %
65.10	95944,0	6,66	165.10	60488,0	4,20
77.10	65056,0	4,52	169.10	42072,0	2,92
91.10	144000,0	10,00	197.10	42192,0	2,93
107.10	70520,0	4,90	213.10	1439744,0	100,00
115.10	48072,0	3,34	214.10	232896,0	16,18
119.10	221120,0	15,36	228.10	322048,0	22,37
135.10	43328,0	3,01	229.10	52168,0	3,62
152.10	40640,0	2,82			

Spectrometer: HEWLETT PACKARD GC/MS 6890/5973
Inlet system: capillary GC/MS
Scan Range: 40-700 amu
Source temperature: 230 °C

Flow: 1.2 mL/min
Column: DB 17-HT (30 m x 0.25 mm x 0.15 µm)
Programme temperature: 40 °C (3 min); 20 °C/min
(350 °C); 350 °C (20 min)