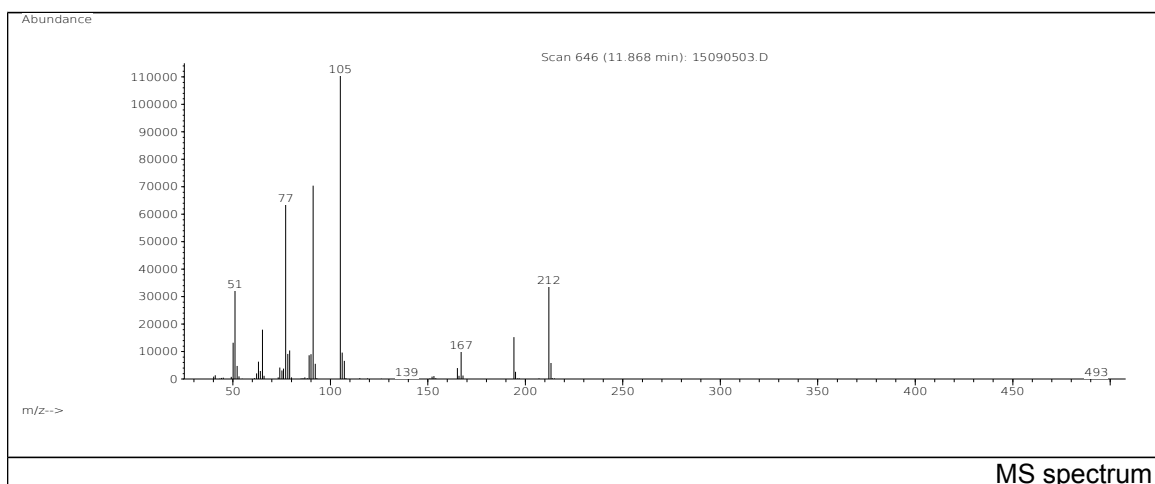
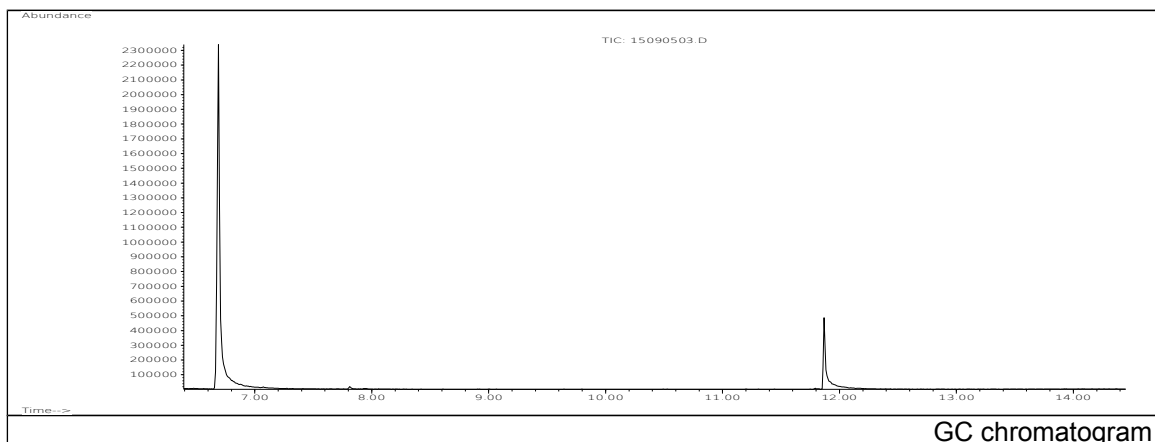


JRC CRL - FCM Database / GC-MS

Sample Name: Benzyl alcohol
Solvent: Ethanol
Concentration: 100 µg/mL

Date: 15/09/2005
CAS: 000100-51-6
PM ref: 13150 [U.R.N. M039]



m/z	Abundance	Ion Intensity %	m/z	Abundance	Ion Intensity %
50.10	13244,0	11,52	91.10	70440,0	61,25
51.10	32104,0	27,92	105.10	115000,0	100,00
65.10	18000,0	15,65	106.10	9695,0	8,43
77.10	63472,0	55,19	107.10	6605,0	5,74
78.10	9179,0	7,98	167.10	9919,0	8,63
79.10	10436,0	9,07	194.10	15288,0	13,29
89.10	8704,0	7,57	212.10	33704,0	29,31
90.10	9108,0	7,92			

Spectrometer: HEWLETT PACKARD GC/MS 6890/5973
Inlet system: capillary GC/MS
Scan Range: 40-700 amu
Source temperature: 230 °C

Flow: 1.2 mL/min
Column: DB 17-HT (30 m x 0.25 mm x 0.15 µm)
Programme temperature: 40 °C (3 min); 20 °C/min
(350 °C); 350 °C (20 min)