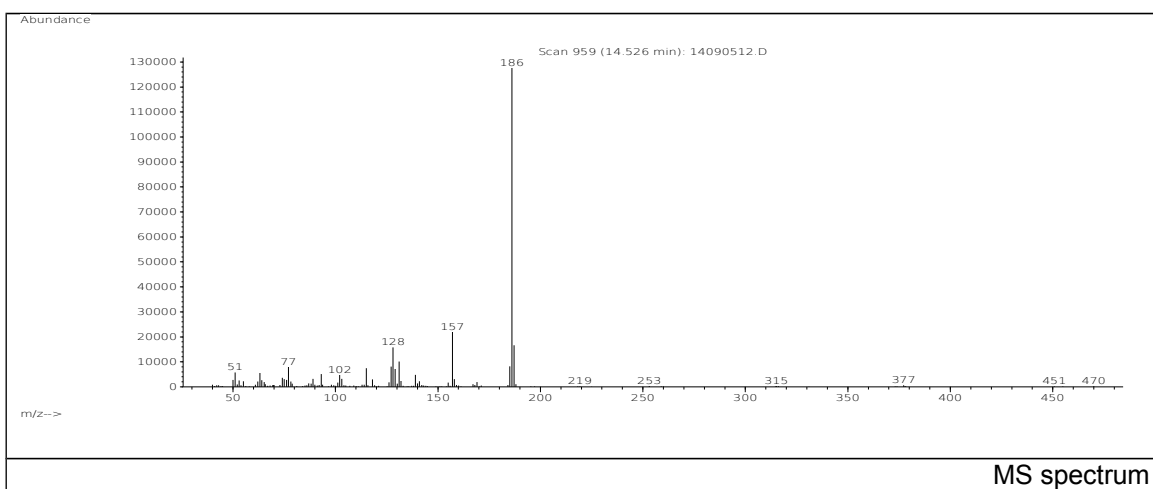
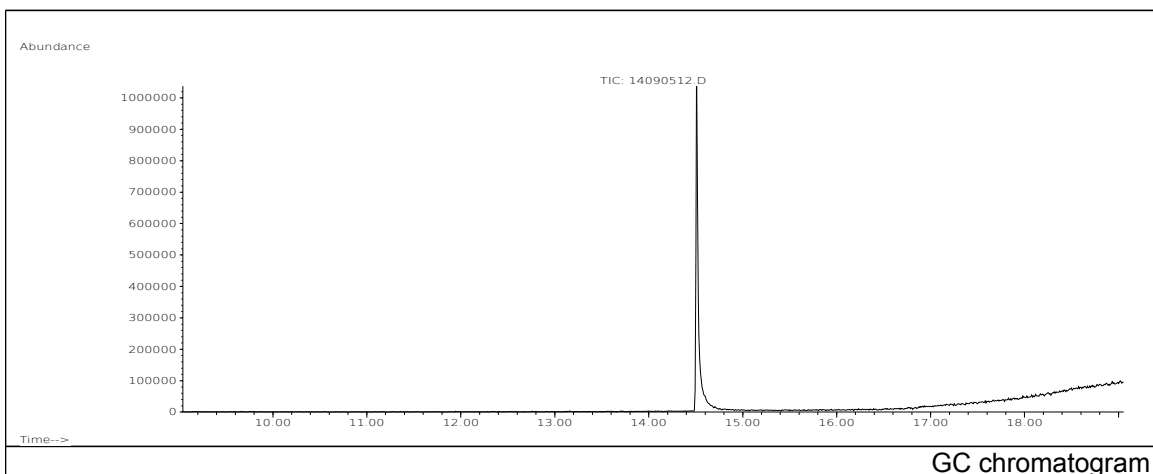


# JRC CRL - FCM Database / GC-MS

Sample Name: 4,4'-Dihydroxybiphenyl  
Solvent: Ethanol  
Concentration: 100 µg/mL

Date: 14/09/2005  
CAS: 000092-88-6  
PM ref: 16000 [U.R.N. M028]



m/z	Abundance	Ion Intensity %	m/z	Abundance	Ion Intensity %
51.10	7639,0	2,91	129.10	13207,0	5,02
63.10	10626,0	4,04	131.10	19112,0	7,27
75.00	6953,0	2,65	139.10	9521,0	3,62
77.10	14217,0	5,41	157.10	43808,0	16,67
93.10	7951,0	3,02	185.10	16368,0	6,23
115.10	12842,0	4,89	186.10	262848,0	100,00
127.10	15438,0	5,87	187.10	31816,0	12,10
128.10	28672,0	10,91			

Spectrometer: HEWLETT PACKARD GC/MS 6890/5973  
Inlet system: capillary GC/MS  
Scan Range: 40-700 amu  
Source temperature: 230 °C

Flow: 1.2 mL/min  
Column: DB 17-HT (30 m x 0.25 mm x 0.15 µm)  
Programme temperature: 40 °C (3 min); 20 °C/min  
(350 °C); 350 °C (20 min)