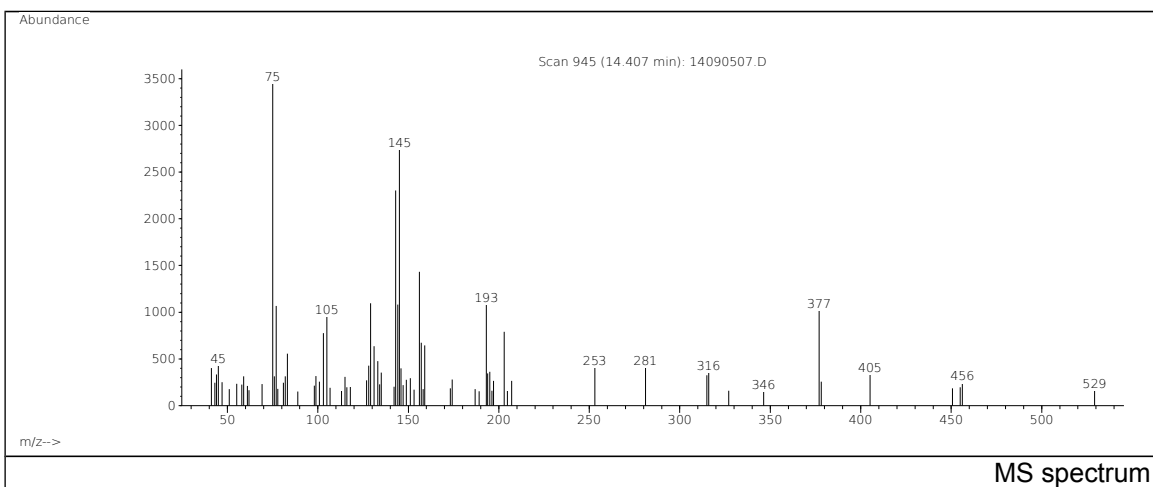
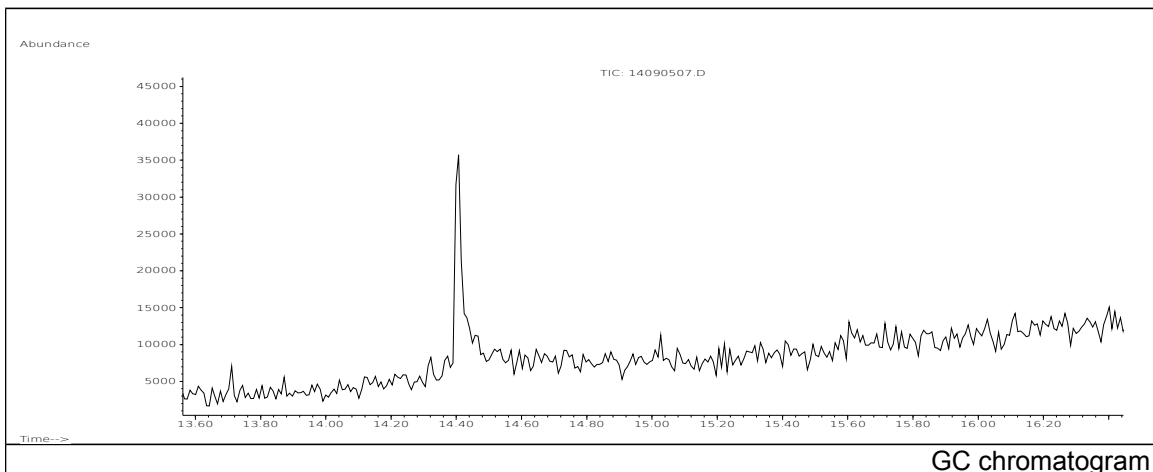


JRC CRL - FCM Database / GC-MS

Sample Name: Dipentaerythritol
Solvent: Ethanol
Concentration: 100 µg/mL

Date: 14/09/2005
CAS: 000126-58-9
PM ref: 16480 [U.R.N. M020]



m/z	Abundance	Ion Intensity %	m/z	Abundance	Ion Intensity %
75.00	3600,0	100,00	145.10	2737,0	76,03
77.00	1068,0	29,67	156.10	1432,0	39,78
103.00	777,0	21,58	157.10	674,0	18,72
105.00	953,0	26,47	159.00	644,0	17,89
129.10	1095,0	30,42	193.10	1081,0	30,03
131.00	636,0	17,67	203.00	791,0	21,97
143.00	2304,0	64,00	377.00	1012,0	28,11
144.10	1083,0	30,08			

Spectrometer: HEWLETT PACKARD GC/MS 6890/5973
Inlet system: capillary GC/MS
Scan Range: 40-700 amu
Source temperature: 230 °C

Flow: 1.2 mL/min
Column: DB 17-HT (30 m x 0.25 mm x 0.15 µm)
Programme temperature: 40 °C (3 min); 20 °C/min
(350 °C); 350 °C (20 min)