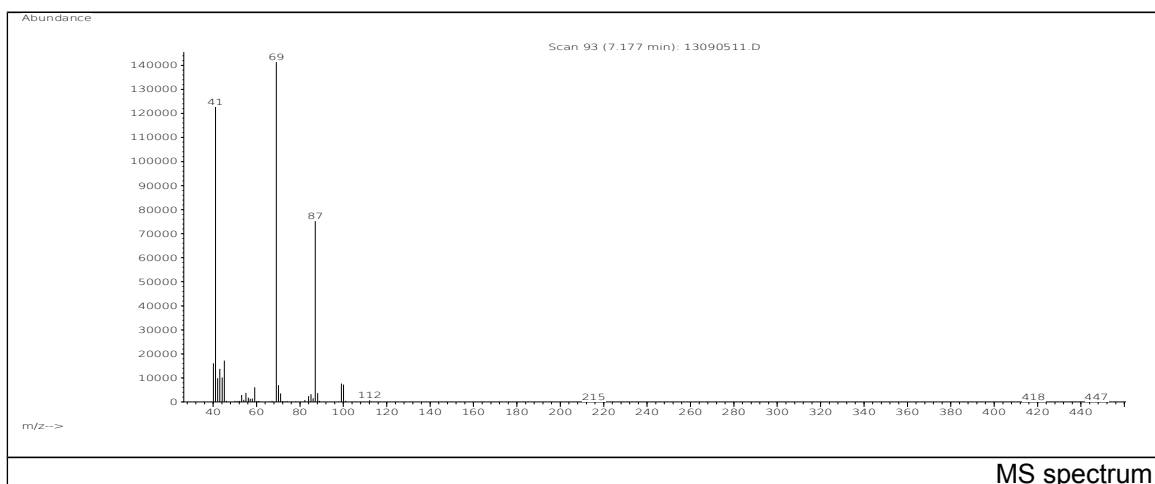
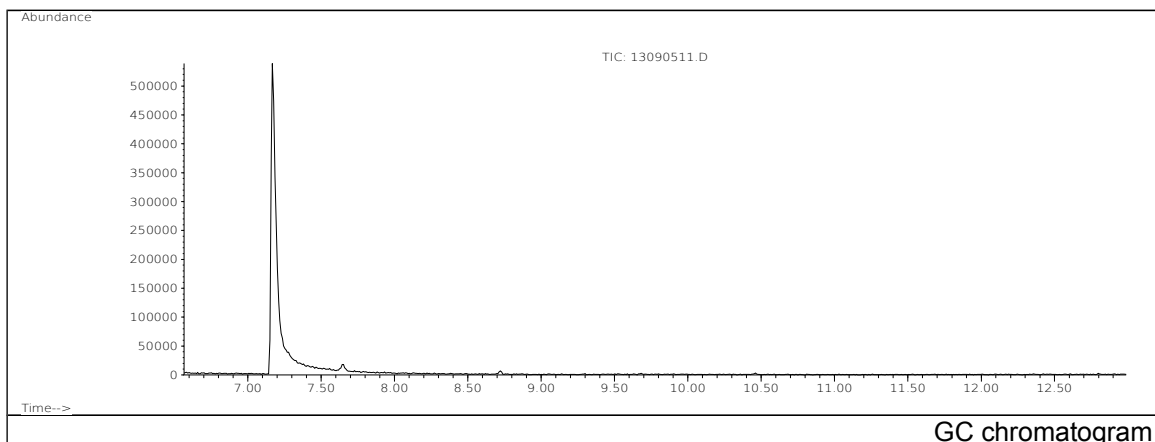


JRC CRL - FCM Database / GC-MS

Sample Name: Methacrylic acid, ethylene glycol monoester
Solvent: Hexane
Concentration: 100 µg/mL

Date: 13/09/2005
CAS: 000868-77-9
PM ref: 21190 [U.R.N. M011]



m/z	Abundance	Ion Intensity %	m/z	Abundance	Ion Intensity %
40.10	16070,0	11,05	69.10	145472,0	100,00
41.10	122784,0	84,40	70.10	7047,0	4,84
42.10	9920,0	6,82	71.10	3555,0	2,44
43.10	13775,0	9,47	87.10	75192,0	51,69
44.10	10198,0	7,01	88.10	3759,0	2,58
45.10	17232,0	11,85	99.10	7713,0	5,30
55.10	3851,0	2,65	100.10	7272,0	5,00
59.10	6128,0	4,21			

Spectrometer: HEWLETT PACKARD GC/MS 6890/5973
Inlet system: capillary GC/MS
Scan Range: 40-700 amu
Source temperature: 230 °C

Flow: 1.2 mL/min
Column: DB 17-HT (30 m x 0.25 mm x 0.15 µm)
Programme temperature: 40 °C (3 min); 20 °C/min
(350 °C); 350 °C (20 min)