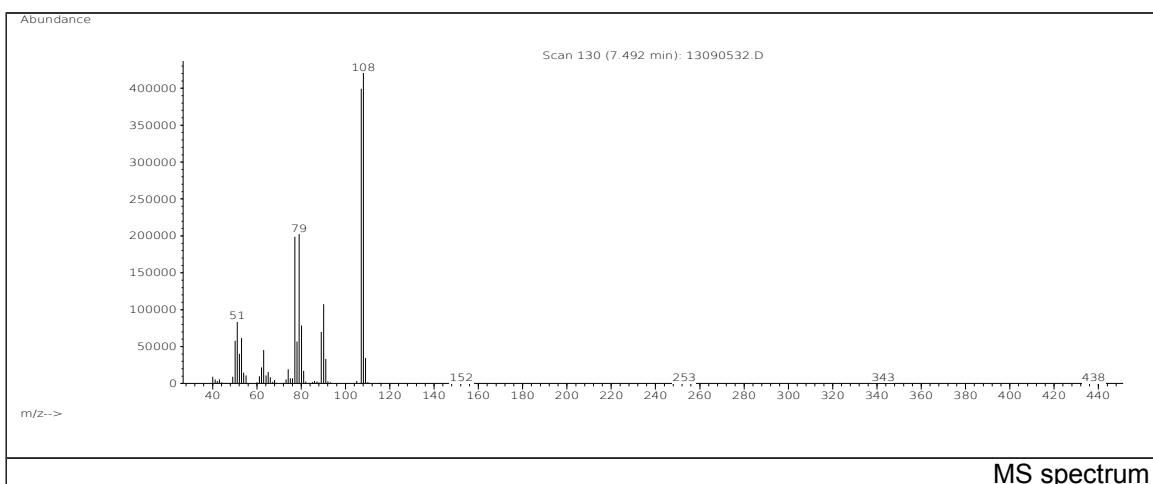
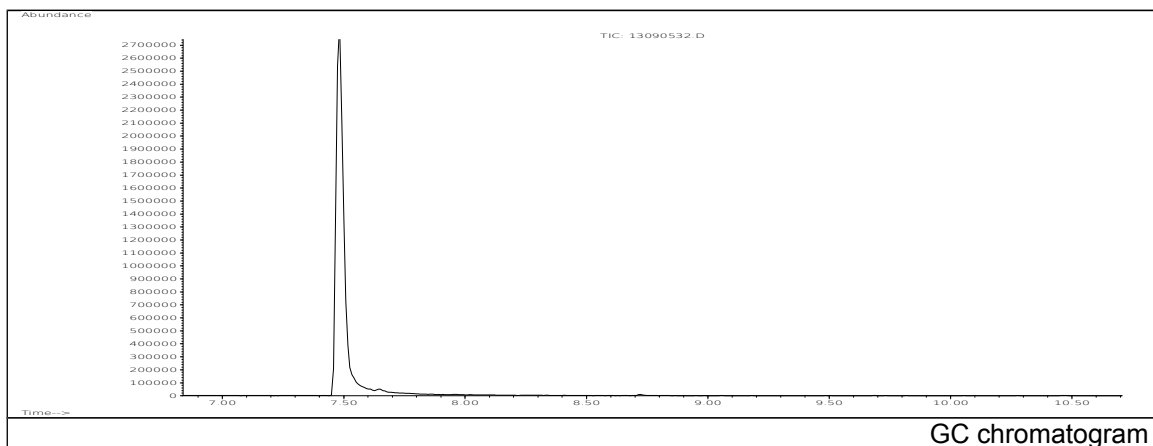


JRC CRL - FCM Database / GC-MS

Sample Name: o-Cresol
Solvent: Ethanol
Concentration: 100 µg/mL

Date: 13/09/2005
CAS: 000095-48-7
PM ref: 14740 [U.R.N. M010]



m/z	Abundance	Ion Intensity %	m/z	Abundance	Ion Intensity %
50.10	76824,0	13,13	80.10	110392,0	18,86
51.10	114024,0	19,48	89.10	91288,0	15,60
52.10	56264,0	9,61	90.10	145792,0	24,91
53.10	74760,0	12,77	91.10	45768,0	7,82
63.10	64616,0	11,04	107.10	533312,0	91,12
77.10	269504,0	46,05	108.10	585280,0	100,00
78.10	77800,0	13,29	109.10	46272,0	7,91
79.10	274240,0	46,86			

Spectrometer: HEWLETT PACKARD GC/MS 6890/5973
Inlet system: capillary GC/MS
Scan Range: 40-700 amu
Source temperature: 230 °C

Flow: 1.2 mL/min
Column: DB 17-HT (30 m x 0.25 mm x 0.15 µm)
Programme temperature: 40 °C (3 min); 20 °C/min
(350 °C); 350 °C (20 min)