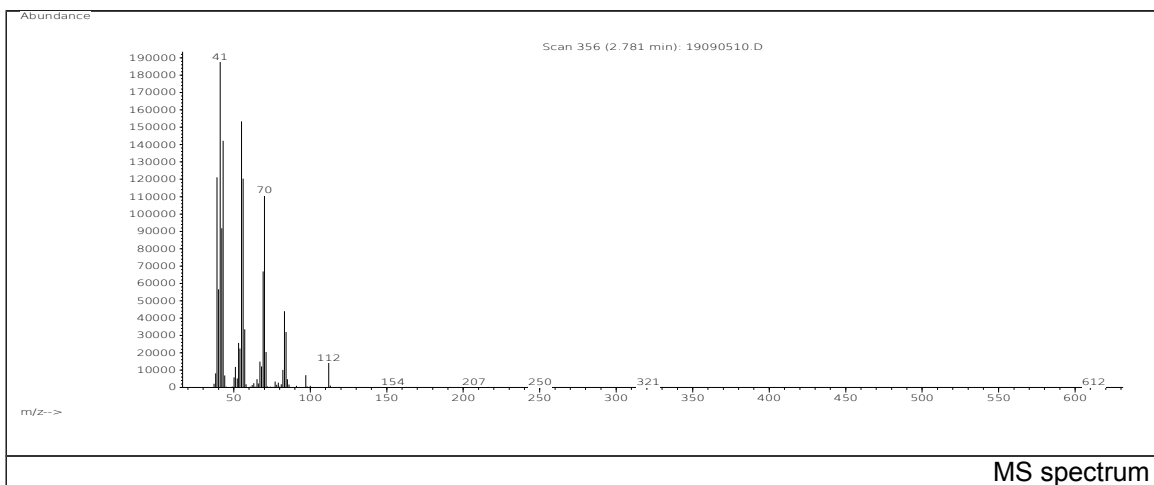


JRC CRL - FCM Database / GC-MS

Sample Name: 1-Octene
Solvent: -
Concentration: -

Date: 19/09/2005
CAS: 000111-66-0
PM ref: 22660 [U.R.N. M009]



m/z	Abundance	Ion Intensity %	m/z	Abundance	Ion Intensity %
39.10	2914816,0	60,65	56.20	4477440,0	93,17
41.20	4551680,0	94,72	57.20	4805632,0	100,00
42.20	3932672,0	81,83	58.10	799616,0	16,64
43.20	4631040,0	96,37	70.20	208448,0	4,34
44.10	437440,0	9,10	71.10	1030400,0	21,44
51.10	255360,0	5,31	85.20	258432,0	5,38
53.10	405376,0	8,44	86.20	2255360,0	46,93
55.20	1382912,0	28,78			

Spectrometer: HEWLETT PACKARD GC/MS 6890/5973
Inlet system: capillary GC/MS
Scan Range: 40-700 amu
Source temperature: 230 °C

Flow: 1.2 mL/min
Column: DB 17-HT (30 m x 0.25 mm x 0.15 µm)
Programme temperature: 40 °C (3 min); 20 °C/min
(350 °C); 350 °C (20 min)