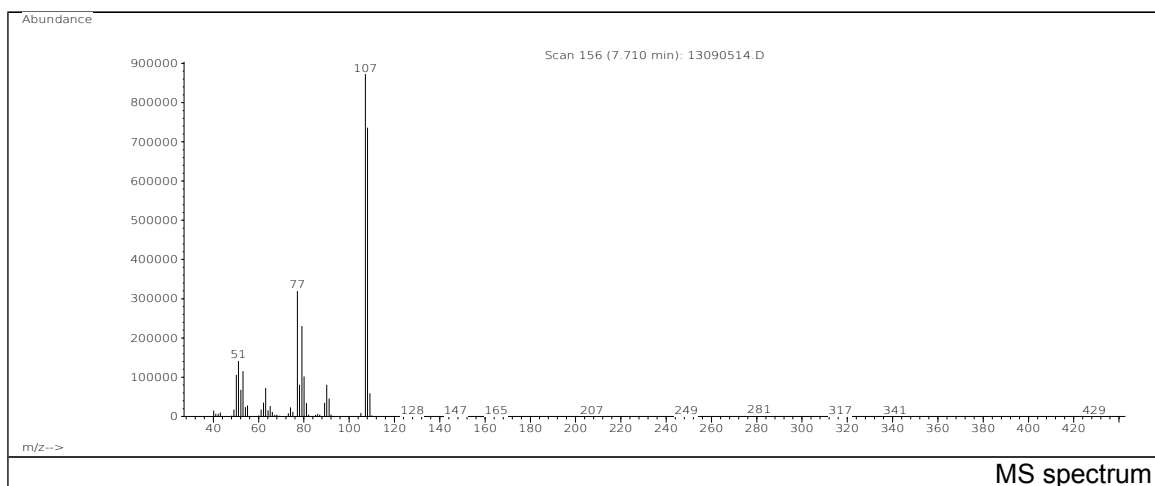
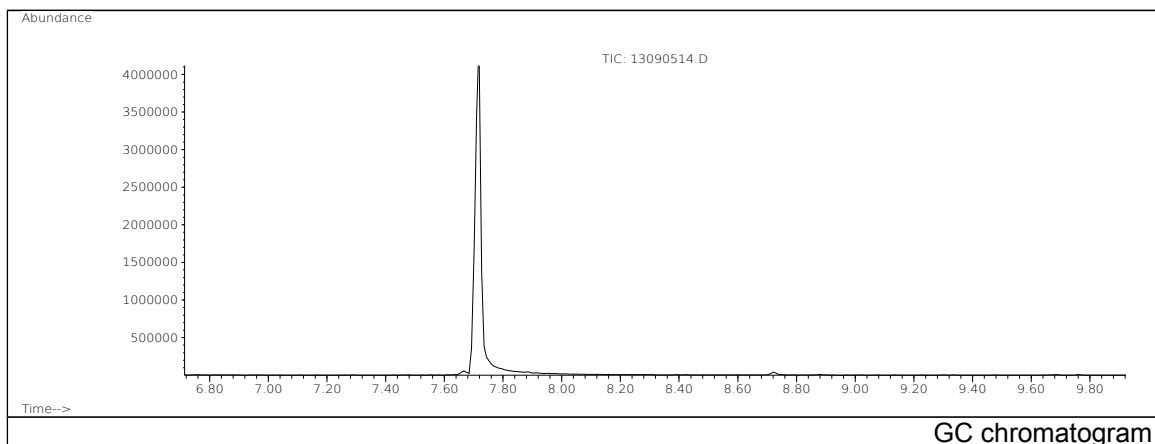


JRC CRL - FCM Database / GC-MS

Sample Name: p-Cresol
Solvent: Ethanol
Concentration: 100 µg/mL

Date: 13/09/2005
CAS: 000106-44-5
PM ref: 14770 [U.R.N. M008]



m/z	Abundance	Ion Intensity %	m/z	Abundance	Ion Intensity %
50.10	105928,0	11,72	79.10	230592,0	25,51
51.10	143040,0	15,82	80.10	101880,0	11,27
52.10	68112,0	7,54	90.10	80608,0	8,92
53.10	115760,0	12,81	91.10	45488,0	5,03
62.10	35520,0	3,93	107.10	903936,0	100,00
63.10	72624,0	8,03	108.10	736000,0	81,42
77.10	319616,0	35,36	109.10	59176,0	6,55
78.10	81048,0	8,97			

Spectrometer: HEWLETT PACKARD GC/MS 6890/5973
Inlet system: capillary GC/MS
Scan Range: 40-700 amu
Source temperature: 230 °C

Flow: 1.2 mL/min
Column: DB 17-HT (30 m x 0.25 mm x 0.15 µm)
Programme temperature: 40 °C (3 min); 20 °C/min
(350 °C); 350 °C (20 min)