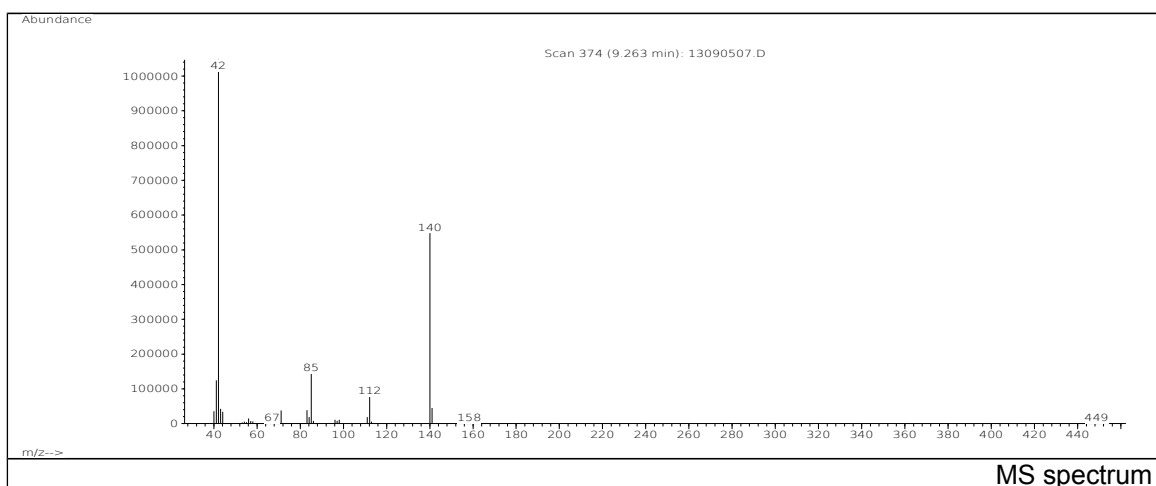
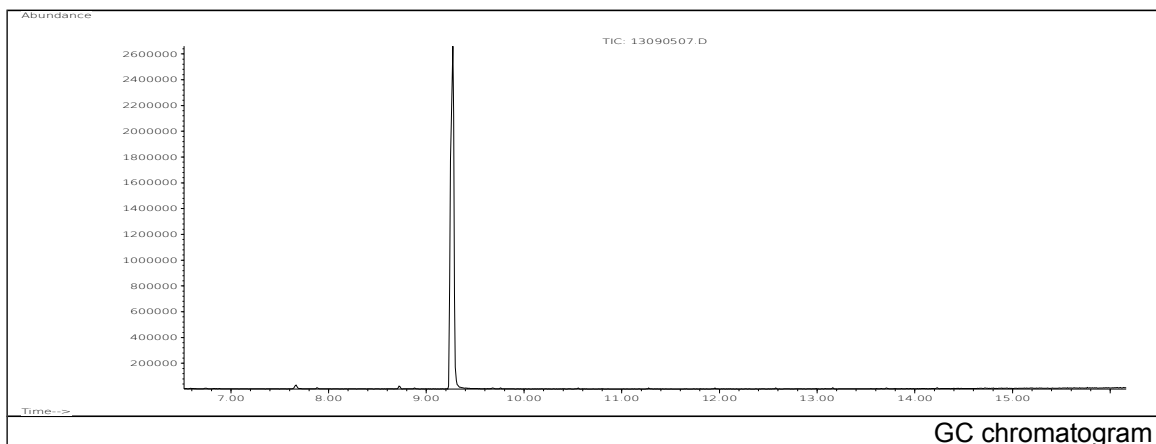


# JRC CRL - FCM Database / GC-MS

Sample Name: Hexamethylene tetramine  
Solvent: Ethanol  
Concentration: 100 µg/mL

Date: 13/09/2005  
CAS: 000100-97-0  
PM ref: 18670 [U.R.N. M007]



m/z	Abundance	Ion Intensity %	m/z	Abundance	Ion Intensity %
40.10	35112,0	3,35	83.10	38704,0	3,70
41.10	124632,0	11,90	84.10	18872,0	1,80
42.10	1046976,0	100,00	85.10	144320,0	13,78
43.10	42248,0	4,04	111.10	18472,0	1,76
44.10	33784,0	3,23	112.10	78304,0	7,48
56.10	14624,0	1,40	140.10	547904,0	52,33
69.10	32288,0	3,08	141.10	44920,0	4,29
71.10	37816,0	3,61			

Spectrometer: HEWLETT PACKARD GC/MS 6890/5973  
Inlet system: capillary GC/MS  
Scan Range: 40-700 amu  
Source temperature: 230 °C

Flow: 1.2 mL/min  
Column: DB 17-HT (30 m x 0.25 mm x 0.15 µm)  
Programme temperature: 40 °C (3 min); 20 °C/min  
(350 °C); 350 °C (20 min)