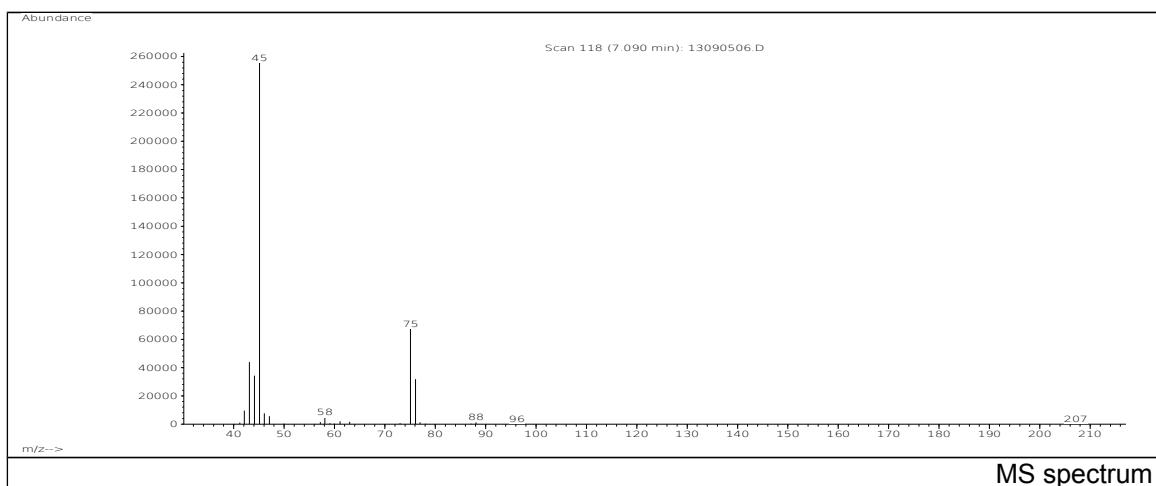
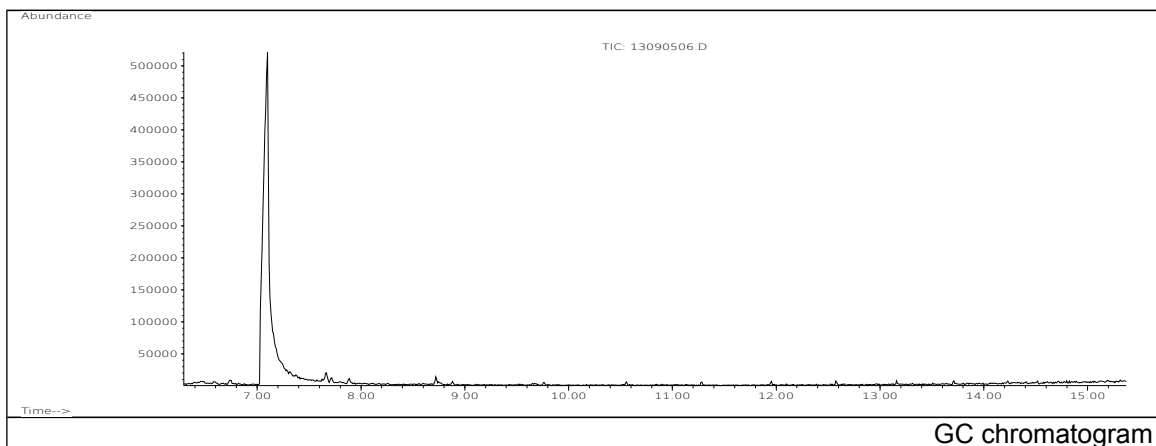


# JRC CRL - FCM Database / GC-MS

Sample Name: Diethyleneglycol  
Solvent: Ethanol  
Concentration: 100 µg/mL

Date: 13/09/2005  
CAS: 000111-46-6  
PM ref: 15760 [U.R.N. M006]



m/z	Abundance	Ion Intensity %	m/z	Abundance	Ion Intensity %
41.10	1293,0	0,55	58.10	4960,0	2,11
42.10	8274,0	3,52	61.00	1534,0	0,65
43.10	38472,0	16,35	63.10	1271,0	0,54
44.10	30400,0	12,92	75.10	58928,0	25,05
45.10	235264,0	100,00	76.10	28760,0	12,22
46.10	6968,0	2,96	77.10	1611,0	0,68
47.10	5730,0	2,44	88.10	916,0	0,39
57.10	1373,0	0,58			

Spectrometer: HEWLETT PACKARD GC/MS 6890/5973  
Inlet system: capillary GC/MS  
Scan Range: 40-700 amu  
Source temperature: 230 °C

Flow: 1.2 mL/min  
Column: DB 17-HT (30 m x 0.25 mm x 0.15 µm)  
Programme temperature: 40 °C (3 min); 20 °C/min  
(350 °C); 350 °C (20 min)