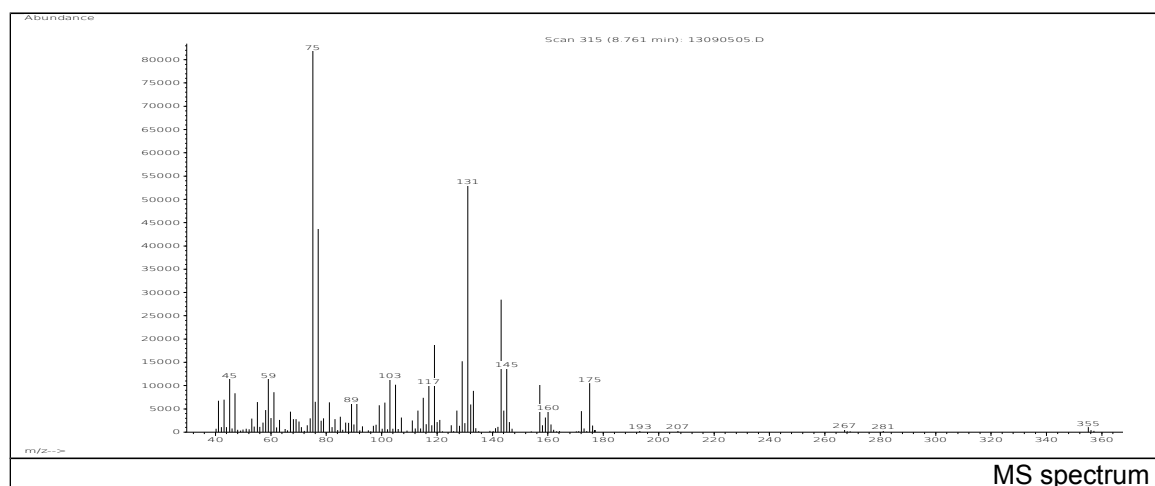
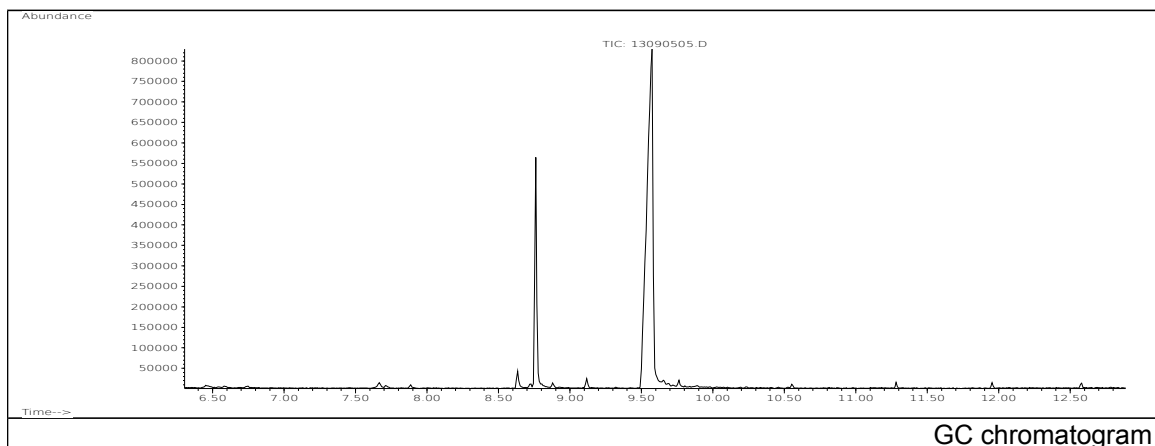


JRC CRL - FCM Database / GC-MS

Sample Name: 1,1,1-Trimethylolpropane
Solvent: Ethanol
Concentration: 100 µg/mL

Date: 13/09/2005
CAS: 000077-99-6
PM ref: 25600 [U.R.N. M004]

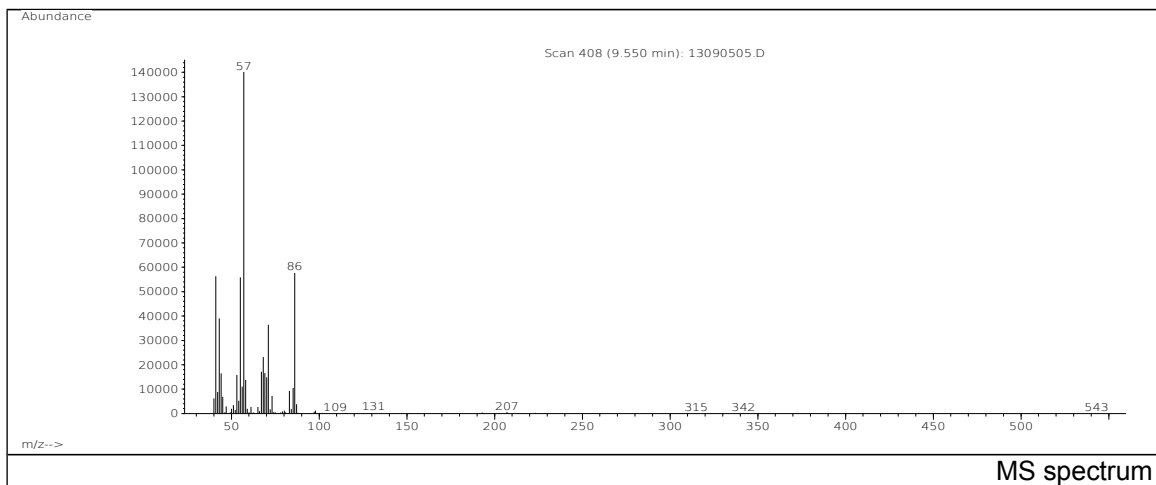


m/z	Abundance	Ion Intensity %	m/z	Abundance	Ion Intensity %
45.10	11432,0	13,70	129.10	15260,0	18,29
59.10	11431,0	13,70	131.10	52896,0	63,39
75.10	83448,0	100,00	133.10	8849,0	10,60
77.10	43624,0	52,28	143.10	28488,0	34,14
103.00	11358,0	13,61	145.10	13697,0	16,41
105.00	10193,0	12,21	157.10	10128,0	12,14
117.00	9963,0	11,94	175.10	10522,0	12,61
119.00	18752,0	22,47			

Spectrometer: HEWLETT PACKARD GC/MS 6890/5973
Inlet system: capillary GC/MS
Scan Range: 40-700 amu
Source temperature: 230 °C

Flow: 1.2 mL/min
Column: DB 17-HT (30 m x 0.25 mm x 0.15 µm)
Programme temperature: 40 °C (3 min); 20 °C/min
(350 °C); 350 °C (20 min)

JRC CRL - FCM Database / GC-MS



m/z	Abundance	Ion Intensity %	m/z	Abundance	Ion Intensity %
41.10	56352,0	38,81	67.10	17192,0	11,84
43.10	39000,0	26,86	68.10	23176,0	15,96
44.10	16480,0	11,35	69.10	16608,0	11,44
53.10	15821,0	10,89	70.10	14828,0	10,21
55.10	55936,0	38,52	71.10	36432,0	25,09
56.10	11025,0	7,59	85.10	10476,0	7,21
57.10	145216,0	100,00	86.10	57848,0	39,84
58.10	13798,0	9,50			

Spectrometer: HEWLETT PACKARD GC/MS 6890/5973
 Inlet system: capillary GC/MS
 Scan Range: 40-700 amu
 Source temperature: 230 °C

Flow: 1.2 mL/min
 Column: DB 17-HT (30 m x 0.25 mm x 0.15 µm)
 Programme temperature: 40 °C (3 min); 20 °C/min
 (350 °C); 350 °C (20 min)