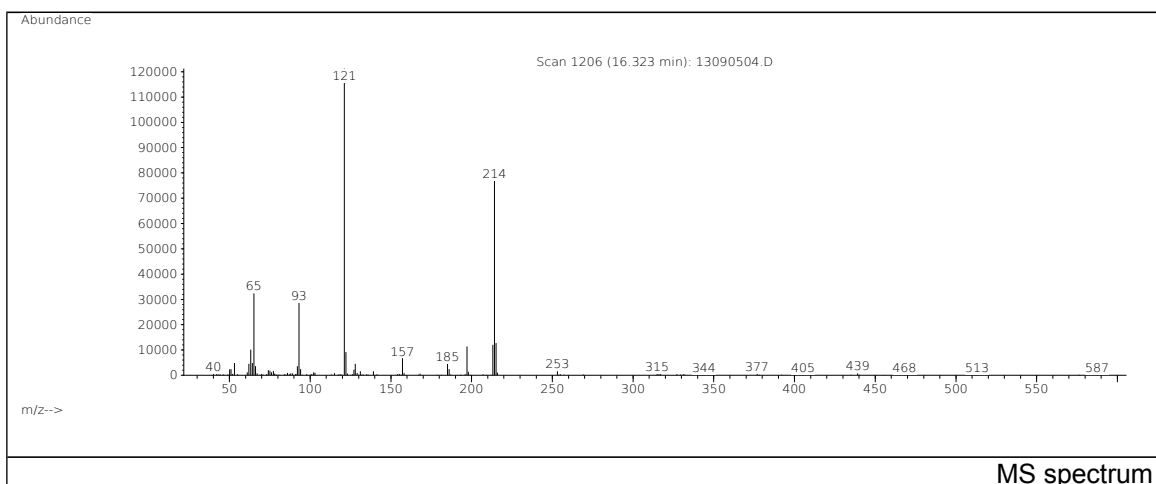
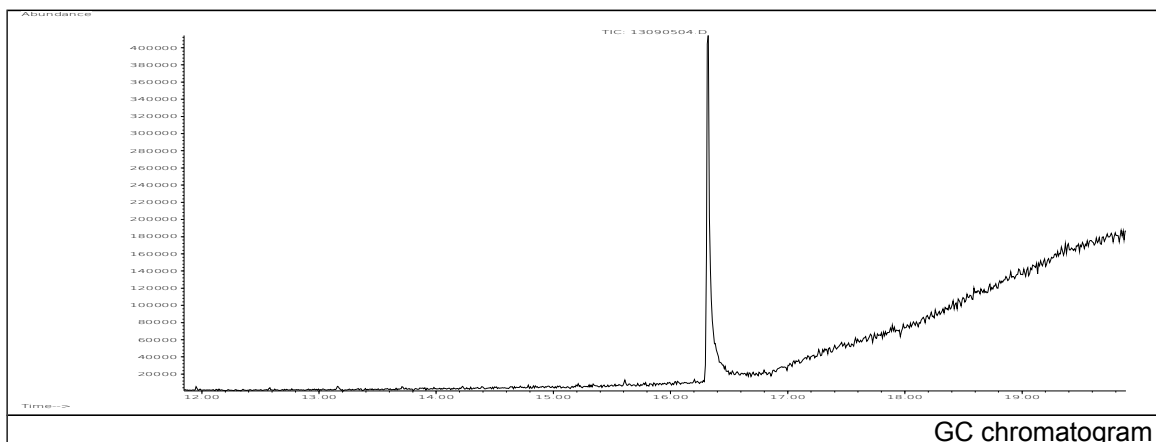


JRC CRL - FCM Database / GC-MS

Sample Name: 4,4'-Dihydroxybenzophenone
Solvent: Ethanol
Concentration: 100 µg/mL

Date: 13/09/2005
CAS: 000611-99-4
PM ref: 15970 [U.R.N. M003]



m/z	Abundance	Ion Intensity %	m/z	Abundance	Ion Intensity %
53.10	4849,0	4,00	128.00	4524,0	3,73
62.10	4534,0	3,74	157.10	6720,0	5,54
63.10	10157,0	8,38	185.10	4666,0	3,85
64.10	4925,0	4,06	197.10	11447,0	9,44
65.10	32392,0	26,71	213.10	12024,0	9,92
93.10	28560,0	23,55	214.10	76944,0	63,46
121.10	121256,0	100,00	215.10	12782,0	10,54
122.10	9167,0	7,56			

Spectrometer: HEWLETT PACKARD GC/MS 6890/5973
Inlet system: capillary GC/MS
Scan Range: 40-700 amu
Source temperature: 230 °C

Flow: 1.2 mL/min
Column: DB 17-HT (30 m x 0.25 mm x 0.15 µm)
Programme temperature: 40 °C (3 min); 20 °C/min
(350 °C); 350 °C (20 min)